

January 14th, 2026 | Willamette Neighborhood Association



Willamette Pump Station & Force Main Improvements Project

Vision & Mission

VISION

Be a collaborative partner in building a resilient clean water future where all people benefit, and rivers thrive.

MISSION

Clackamas Water Environment Services (WES) produces clean water, protects water quality and recovers renewable resources. We do this by providing wastewater services, stormwater management, and environmental education.

It's our job to protect public health and support the vitality of our communities, natural environment, and economy.



Project Location





How a **pump station** moves wastewater through the collection system

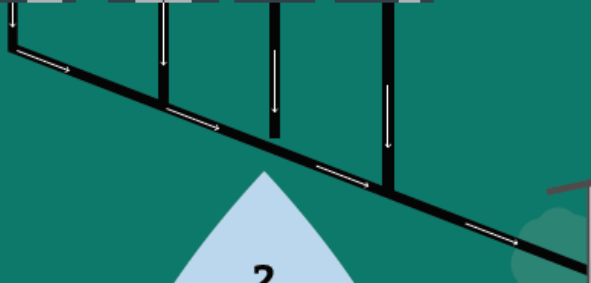
1
Wastewater from homes and businesses



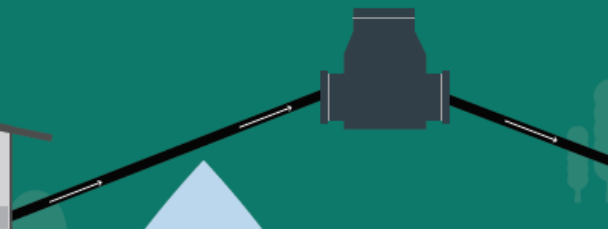
3
Pump Stations collect and push the wastewater through Forcemains



2
Gravity moves the wastewater through the collection system



4
Forcemains carry the pushed wastewater



5
Gravity takes back over



6
The water resource recovery facility



CLACKAMAS
WATER
ENVIRONMENT
SERVICES



Purpose of Project

- Resolve existing wet weather capacity deficiencies from 2019 Sewer Plan
- Increase resiliency for seismic and flood hazards
- Add redundancy of conveyance systems across the Willamette River
- Improve reliability by replacing old equipment

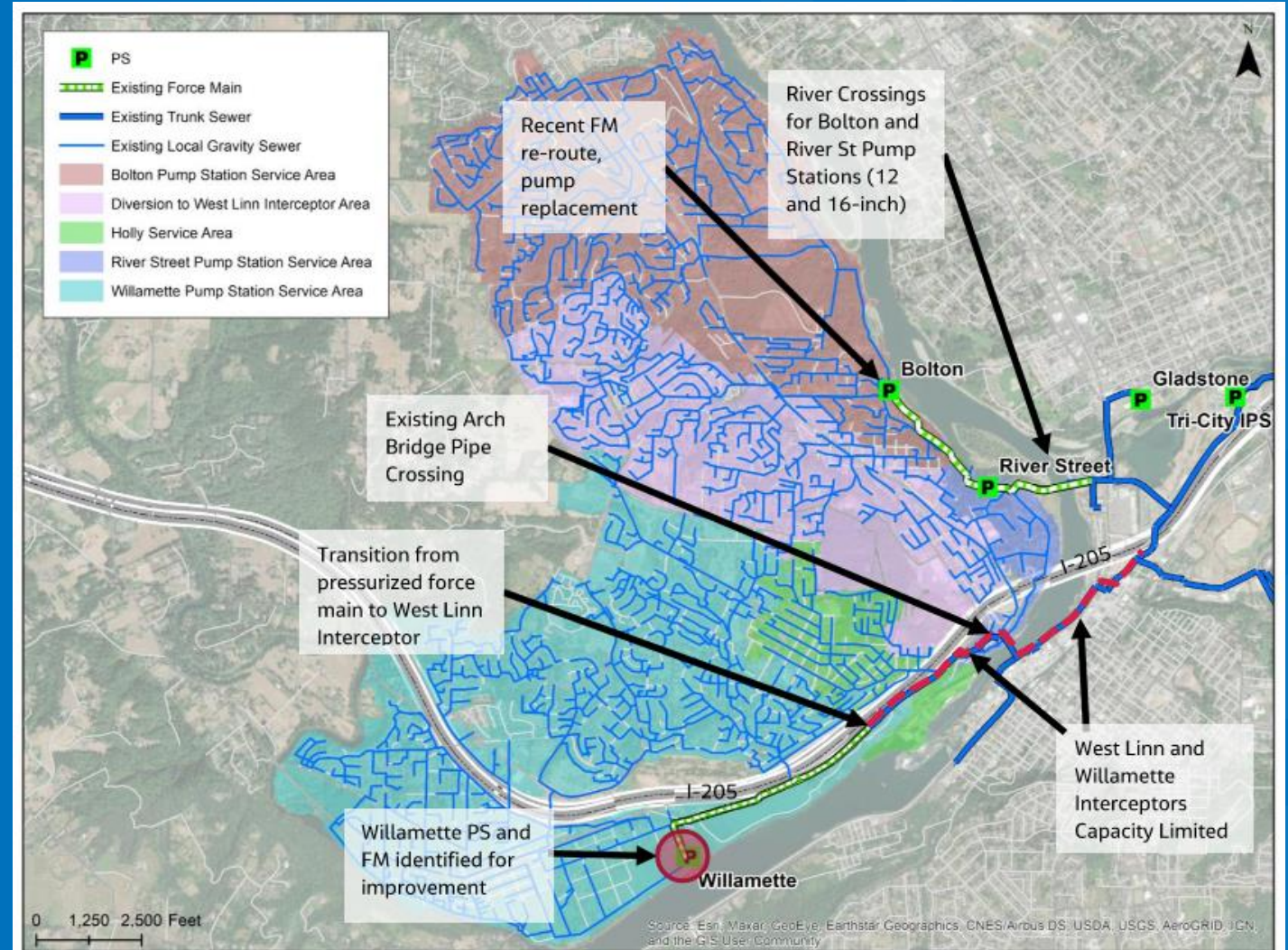


Figure 2.1. Study Area and Infrastructure Map (PS=pump station, FM=force main)



Willamette Pump Station and Force Main

Existing Pump Station

- Building size too small to add capacity
- Building structure and foundation do not meet current Building Code for gravity and seismic loads
- Located in the 100-year flood plain; flooded in 1996
- Equipment is aging and replacement parts are limited



Willamette Pump Station and Force Main

New Pump Station Site Considerations

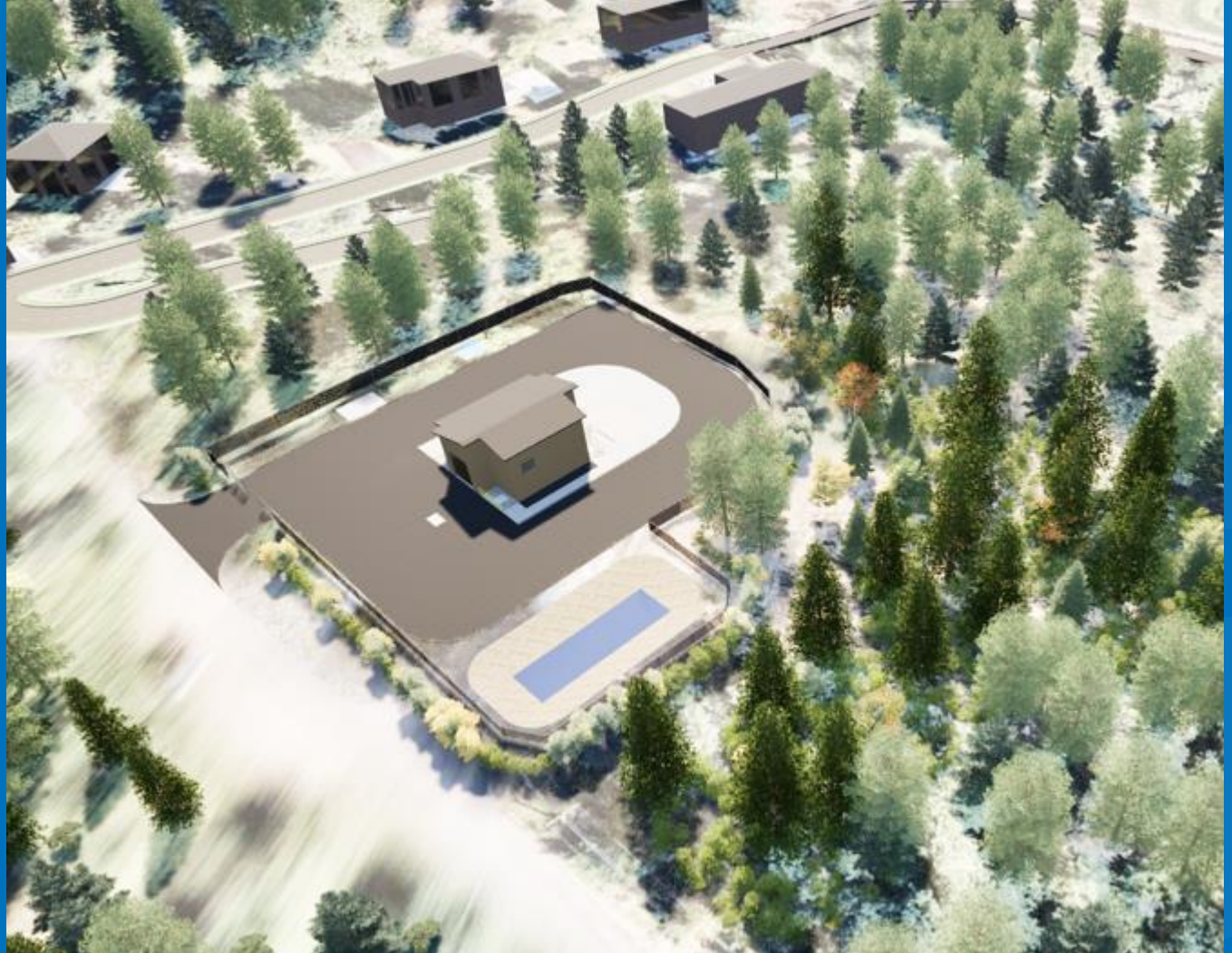
- Meet current code requirements
- Address maintenance access and safety issues
- Minimize or avoid wetland impacts
- Improve access during flood events
- Minimize noise from site



Willamette Pump Station and Force Main

New Pump Station Site Plan

- No permanent impacts or future expansion to wetlands
- Site accessible during flood events
- Manage onsite storm water with no changes to existing drainage patterns
- Replanting disturbed areas with landscaping and fence screening
- Minimize noise and odors



New Willamette Pump Station



Willamette Pump Station and Force Main *Building Design Rendering*

- Shorter than two-story house
- Gable roof for residential feel
- Cement Mortar Unit walls
- Upper metal wall panels
- Metal roof
- Earthtone colors
- Dark Sky Compliant Lighting



Willamette Pump Station and Force Main

Noise / Odor Mitigation

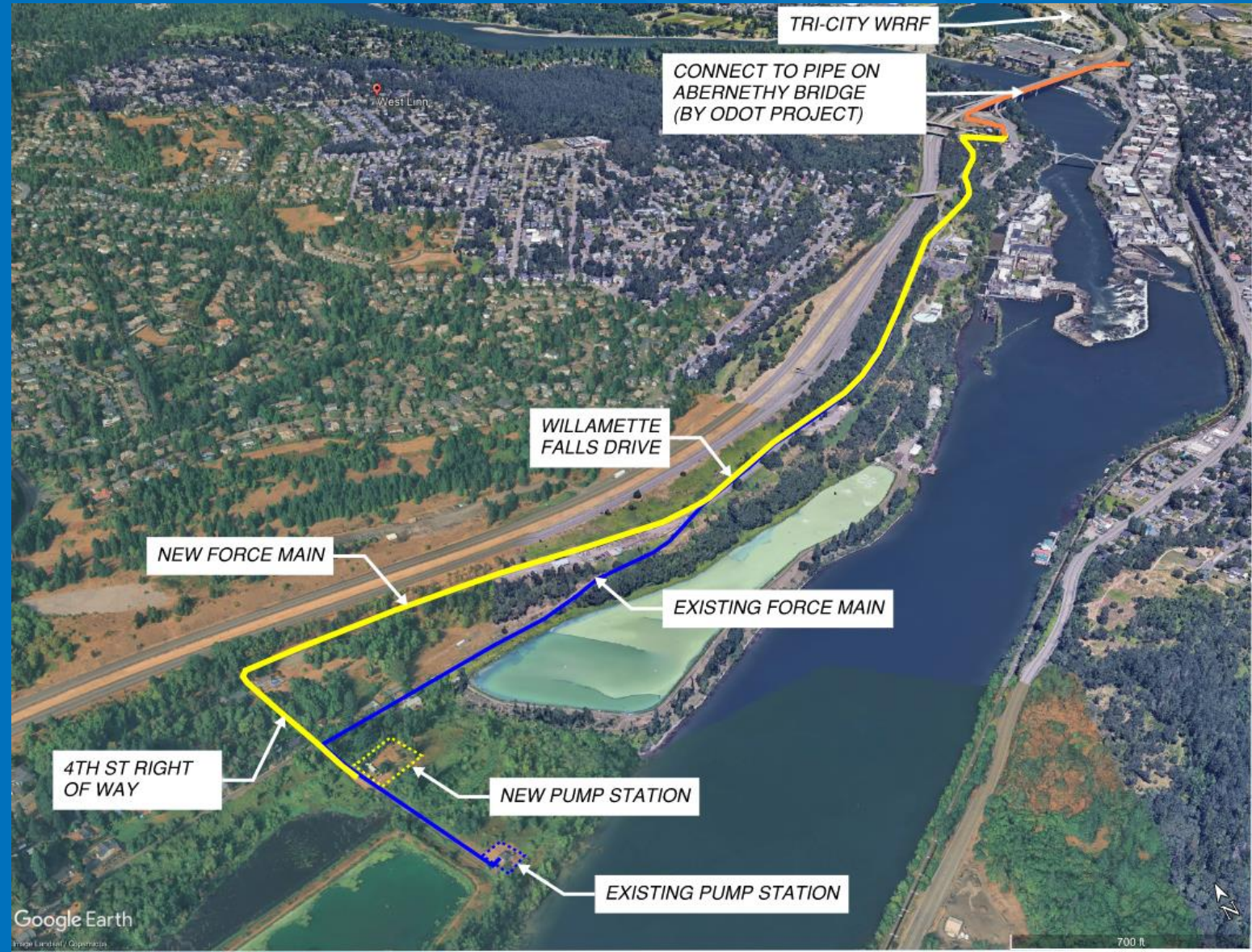
- Established baseline noise level at property between 40-60 DBA (like steady to moderate rain)
- Sound levels will meet City & DEQ requirements for noise allowance
- Emergency generator noises reduced
- Biological odor scrubber for odor control



Willamette Pump Station and Force Main

New Force Main

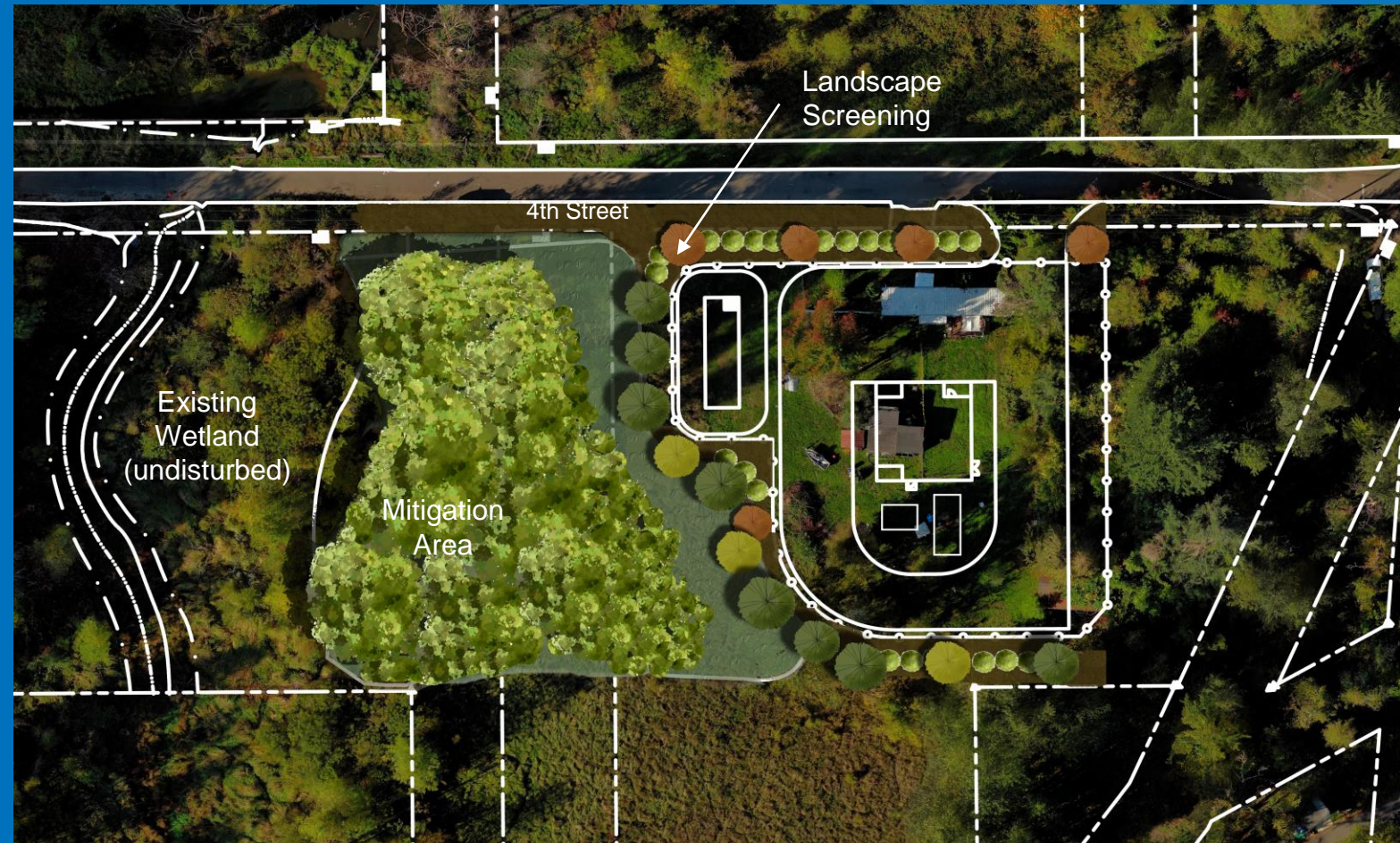
- Extends to Main Street in Oregon City to bypass downstream restrictions
- Replaces aging pipeline in remote area
- Follows public right of way to limit impact to private property
- Adds redundancy with new Willamette River crossing and intertie to existing sewer



Willamette Pump Station and Force Main

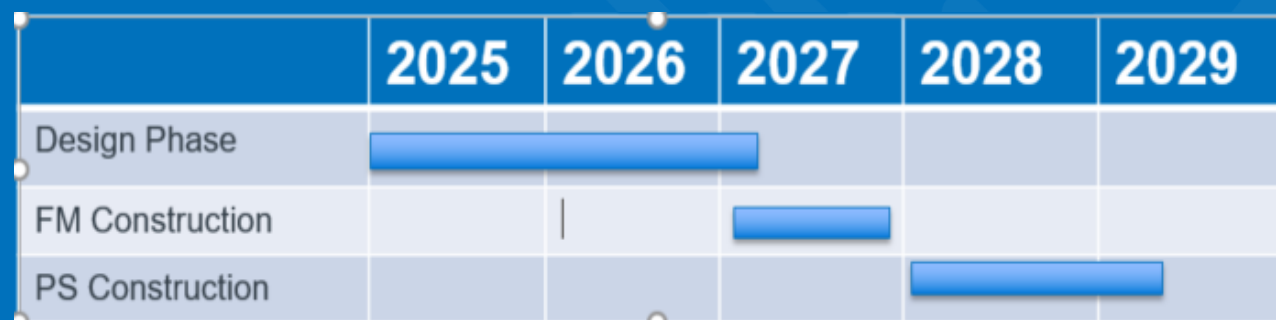
Tree Removal and Mitigation

- No Heritage Trees Impacted
- Working to minimized tree impacts and mitigation with City
- Estimate 40-50 trees to be impacted by proposed improvements
- 48% of impacted trees are dead, failure prone, or non-significant
- 6–8X tree replacement and over 1,000 shrubs to be planted for screening and habitat enhancement
- Undeveloped right of way will be reseeded with access path per City request



Construction Impacts and Preliminary Timeline

- No service disruptions expected
- Local closure along 4th Street
- Expect delays along Willamette Falls Drive for force main construction
- Traffic control and safety support to help minimize impacts during construction
- Committed to communication as project proceeds



Want to learn more?

We will keep you informed and provide timely updates

- **Scan** the QR code to visit the project website
- **Sign up** for email updates
- **Contact** Clackamas Water Environment Services (WES):
WES-Communications@clackamas.us

