



# VOTERS' PAMPHLET

Ballots delivered by May 7



MAY 19, 2026

PRIMARY ELECTION



[elections@clackamas.us](mailto:elections@clackamas.us)



[clackamas.us/elections](https://clackamas.us/elections)



503-655-8510



1710 Red Soils Court, Ste. 100  
Oregon City, OR 97045



Catherine McMullen  
County Clerk

Elections Division

elections@clackamas.us  
503-655-8510

1710 Red Soils Court, Suite 100  
Oregon City, OR 97045

Dear Voter:

**This part of your May 19, 2026 Primary Election voters' pamphlet is provided by Clackamas County.** It includes candidates and measures from local jurisdictions. The State pamphlet (on either side of this color bar portion) includes federal and state candidates and measures. Where you live determines what is on your ballot. Not all candidates submitted a statement for the voters' pamphlet. Content is printed as filed; no corrections to spelling or grammar are made, and the information is not verified for accuracy by the county.

Contact Clackamas County Elections at 503-655-8510 or [elections@clackamas.us](mailto:elections@clackamas.us) or visit [clackamas.us/elections](https://clackamas.us/elections) for accurate and trusted election information.

**The Voter Registration and Party Choice Deadline is April 28, 2026.** Visit [oregonvotes.gov](https://oregonvotes.gov) to register to vote or update your information. The Clackamas County Elections Oregon City office will be open until 7 p.m. on the deadline. Ballots will be mailed to all eligible voters the next day, on April 29. **Please contact our office if you do not receive your ballot by May 7.**

**Oregon has closed party primary elections.** If you wish to vote for partisan candidates in the May 19, 2026 Primary Election, you must register with one of the major parties (Democratic or Republican) by the Registration and Party Choice Deadline on April 28. You can choose your party by updating your voter registration information online at [oregonvotes.gov](https://oregonvotes.gov) or by filling out a paper registration form. If you change your party choice near the deadline you may receive two ballots. The first ballot with the old party is inactivated. Vote *only* the second ballot with your new party.

**Sign up for Track Your Ballot** at [clackamas.us/elections/track-your-ballot](https://clackamas.us/elections/track-your-ballot) to receive alerts when your ballot is mailed via text, phone, or email. After you vote and return your ballot, you'll be alerted when it has been accepted for counting.

**Twenty-six Official Ballot Drop Sites are open 24/7** in Clackamas County. You may deposit your ballot at any official drop box in the state until 8 pm on Election Day, May 19, 2026. If you choose to return your ballot by mail it *must be postmarked* on or before Election Day. Because of USPS changes in how mail is processed, **we recommend returning your ballot directly to an Official Ballot Drop Box after Tuesday, May 12.** The **ColtonTel drop site** has reopened with *drive-up access* at 20983 S Highway 211. The Oak Lodge Library drop site has been moved to the new **Oak Lodge Library/Concord Community Center** located at 3783 SE Concord Rd. Find your nearest official ballot drop site on our website.

**Two voter locations to serve you!** Clackamas County Elections opens the **Happy Valley Vote Center** inside the Happy Valley Library (13793 SE Sieben Park Way) on May 4. Hours at the Happy Valley Vote Center and the **Clackamas County Elections Office** (1710 Red Soils Ct., Suite 100 in Oregon City) are Monday – Friday, 8:30 a.m. – 5 p.m., Saturday, May 16 10 a.m. – 2 p.m., and Election Day, Tuesday May 19, 7 a.m. – 8 p.m.

**Your ballot will have a new design.** Clackamas County Elections upgraded the ballot tabulation system to improve voter experience and increase ballot processing efficiency. How you mark your ballot will not change. You can view a sample ballot online with the new design.

**It is an honor to serve Clackamas County voters as your elected County Clerk.** Thank you for voting.

Sincerely,

Catherine McMullen, Clackamas County Clerk

## Oregon has Closed Primary Elections

Oregon has closed party primary elections in the May 19, 2026 Primary Election.

To vote in a major political party's (Democratic or Republican) primary nominating election, you must be registered with that political party 21 days before Election Day.

In the May 19, 2026 Primary Election, major party partisan offices listed on the party primary ballot (Democratic or Republican) include US Senator, US Representative of Congress, Governor, State Senator, and State Representative. Only voters registered with a major political party will receive a ballot with partisan offices.

Voters registered with a minor party or non-affiliated will receive a ballot with non-partisan offices and measures in the May 19, 2026 Primary.

**The Voter Registration and Party Choice Deadline is April 28, 2026.**

Visit [oregonvotes.gov](https://oregonvotes.gov) to register to vote or update your information.



## Clackamas County Elections

Two locations to serve you!

### **\*\*Clackamas County Elections\*\***

County Elections Office  
1710 Red Soils Ct., Suite 100  
Oregon City, OR 97045

### **\*\*Happy Valley Vote Center\*\***

**Open May 4 – Election Day, May 19**

inside the Happy Valley Library  
13793 SE Sieben Park Way  
Happy Valley, OR 97015

### **Hours at both locations:**

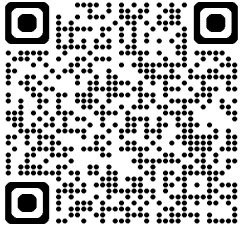
Monday – Friday, 8:30 a.m. – 5 p.m.  
Saturday, May 16, 10 a.m. – 2 p.m.  
Election Day, May 19, 7 a.m. – 8 p.m.

### **At each voter service location, citizens can:**

- replace a lost or damaged ballot,
- update voter registration information,
- get voting assistance if you have a disability,
- get voting assistance in a preferred language,
- return your voted ballot,
- vote in person.

### **Clackamas County Elections**

503-655-8510 | [elections@clackamas.us](mailto:elections@clackamas.us)  
[clackamas.us/elections](https://clackamas.us/elections)



Selected portions of this county voters' pamphlet are available in Arabic, Simplified Chinese, Traditional Chinese, Japanese, Korean, Russian, Spanish, Ukrainian, and Vietnamese. These translations can be found online at [oregonvotes.gov/ClackamasVP](https://oregonvotes.gov/ClackamasVP)

تتوفر أجزاء مختارة من كتيب الناخبين في هذه المقاطعة باللغة العربية. يمكن العثور على هذه الترجمات عبر الإنترنت على [oregonvotes.gov/ClackamasVP](https://oregonvotes.gov/ClackamasVP)

本县选民手册的部分内容提供简体中文版本。可以访 [oregonvotes.gov/ClackamasVP](https://oregonvotes.gov/ClackamasVP) 获取译本。

本縣選民手冊的部分內容提供繁體中文版本。可造訪 [oregonvotes.gov/ClackamasVP](https://oregonvotes.gov/ClackamasVP) 獲取該譯本。

この郡の有権者向けのパンフレットのの一部は、日本語でもご利用いただけます。これらの翻訳は、[oregonvotes.gov/ClackamasVP](https://oregonvotes.gov/ClackamasVP) にてオンラインでご覧いただけます。

카운티 유권자 팸플릿 내 선택된 부분은 한국어로 준비되어 있습니다. 번역은 온라인 [oregonvotes.gov/ClackamasVP](https://oregonvotes.gov/ClackamasVP) 에서 찾아보실 수 있습니다.

Отдельные части брошюры избирателей этого округа доступны на русском языке. Эти переводы можно найти в Интернете по адресу [oregonvotes.gov/ClackamasVP](https://oregonvotes.gov/ClackamasVP)

Algunas secciones de este folleto para votantes del condado están disponibles en español. Estas traducciones están disponibles en línea en [oregonvotes.gov/ClackamasVP](https://oregonvotes.gov/ClackamasVP)

Окремі частини цієї брошури для виборців каунті доступні українською мовою. Ці переклади можна знайти онлайн на вебсторінці [oregonvotes.gov/ClackamasVP](https://oregonvotes.gov/ClackamasVP)

Các phần được chọn trong tập thông tin cử tri quận này có bản ngôn ngữ tiếng Việt. Bản dịch có thể xem trực tuyến tại [oregonvotes.gov/ClackamasVP](https://oregonvotes.gov/ClackamasVP)

# Table of Contents

## Voting Information

Letter from the County Clerk	C-2
Voter Service Locations	C-3
Voters' Pamphlet Translation Access	C-4
Official Ballot Drop Sites	C-6
Track Your Ballot Information	C-7
Oregon Voter Registration Form	C-68

## Candidates\*

### Clackamas County Commissioner, Position 2

Jim Bernard	C-8
David Bush	C-8
Jacob Hinthorne*	
Paul Savas	C-9
Mark Shull	C-9

### Clackamas County Commissioner, Position 4

Robert Kukish	C-10
Brian O'Neill	C-10
Bill Osburn	C-11
Diana Helm	C-11
R W Smith	C-12
Jeanette Christina Warren*	
Pete Wease	C-12

### Clackamas County Commissioner, Position 5

Ben West	C-13
Sonya Fischer	C-13

### Clackamas County Assessor

Bronson W Rueda	C-14
-----------------	------

### Clackamas County Justice of the Peace

Kathleen Rastetter	C-14
--------------------	------

### Metro Council, President

Juan Carlos González	C-15
Bruce Broussard*	
Chris Christensen	C-15
Ken Ross	C-16
Philip Fensterer*	

### Metro Auditor

Brian Evans	C-16
-------------	------

### Metro Council, District 1

Ashton Simpson	C-17
Noah Ernst	C-17

### Metro Council, District 2

Christine Lewis	C-18
-----------------	------

## Measures

### Clackamas County

Measure 3-633	C-19
---------------	------

### City of Lake Oswego

Measure 3-635	C-24
---------------	------

### City of Rivergrove

Measure 3-637	C-30
---------------	------

### City of Wilsonville

Measure 3-632	C-35
---------------	------

### Canby School District

Measure 3-636	C-51
---------------	------

### Newberg School District

Measure 36-239	C-58
----------------	------

### Riverdale School District

Measure 26-263	C-59
----------------	------

### Sandy Fire District

Measure 3-634	C-61
---------------	------

## Voters' Pamphlet Submission Information

- \*Not all candidates choose to purchase space in the Voters' Pamphlet.
- For a complete list of candidates and measures that have been filed, visit [clackamas.us/elections](http://clackamas.us/elections) or visit us at 1710 Red Soils Court, Suite 100, Oregon City, OR 97045.
- Measure filings appear in the order which they will appear on the ballot as instructed by the Secretary of State. Arguments in favor/opposition to a measure appear exactly as submitted, by the type of argument, in the order each was received by Clackamas County Elections.

## Not all candidates or measures in this Voters' Pamphlet will be on your ballot.

- Your residence address determines those districts in which you may vote.
- You will only receive a ballot to nominate for Republican / Democratic positions if you are registered within the party by the registration deadline. Everyone votes on Nonpartisan positions.

*The printing of candidate statements, measure filings, and arguments does not constitute an endorsement by Clackamas County, nor does the county warrant the accuracy or truth of any statements.*

# Official Ballot Drop Sites



Twenty-six official ballot drop sites in Clackamas County are available to the public 24 hours a day from April 29, 2026 until 8 p.m. on Election Day.

*\*Drive-up ballot drop access*

## Boring

**Clackamas County Bank\***  
28500 SE Hwy 212  
Boring, OR 97009

## Canby

**Canby Civic Building**  
222 NE 2nd Ave.  
Canby, OR 97013

**Canby - Arneson Garden\***  
249 S Sequoia Parkway  
Canby, OR 97013

## Colton

**ColtonTel\***  
20983 S Hwy 211  
Colton, OR 97017

## Damascus

**Damascus Square\***  
19830-20000 SE Hwy 212  
Damascus, OR 97089

## Estacada

**Estacada City Hall**  
475 SE Main St.  
Estacada, OR 97023

**Estacada Public Library\***  
825 NW Wade St.  
Estacada, OR 97023

## Gladstone

**Gladstone Civic Center**  
18505 Portland Ave.  
Gladstone, OR 97027

## Happy Valley

**Happy Valley City Hall\***  
16000 SE Misty Dr.  
Happy Valley, OR 97086

**Happy Valley Library**  
13793 SE Sieben Park Way  
Happy Valley, OR 97086

## Lake Oswego

**Lake Oswego City Hall\***  
380 A Ave.  
Lake Oswego, OR 97034

**Lake Oswego - Westlake Park\***  
14165 Bunick Dr.  
Lake Oswego, OR 97035

## Milwaukie / Oak Lodge

**Clackamas Community College - Harmony Campus**  
7738 SE Harmony Rd.  
Milwaukie, OR 97222

**Milwaukie City Hall**  
10501 SE Main St.  
Milwaukie, OR 97222

**Milwaukie Public Safety Building**  
3200 SE Harrison St.  
Milwaukie, OR 97222

**Oak Lodge Library/Concord Community Center\***  
3783 SE Concord Rd.  
Milwaukie, OR 97267  
(New Location)

## Molalla

**Molalla Public Library\***  
201 E 5th St.  
Molalla, OR 97038

## Oregon City

**Clackamas County Clerk and Elections\***  
1710 Red Soils Ct.  
Oregon City, OR 97045

**Clackamas Community College - Oregon City\***  
19600 Molalla Ave.  
Oregon City, OR 97045  
*(Box is located near the Tri-Met bus drop-off located in the Orange parking lot by Rook Hall)*

**Oregon City - City Hall\***  
625 Center St.  
Oregon City, OR 97045

## Sandy

**Sandy City Hall**  
39250 Pioneer Blvd  
Sandy, OR 97055  
*(back side of city hall)*

**Sandy Public Library\***  
38980 Proctor Blvd.  
Sandy, OR 97055

Your voted ballot may be dropped off at any official drop site in the state. The Secretary of State's drop box locator is: [www.oregonvotes.gov/dropbox](http://www.oregonvotes.gov/dropbox)

# Official Ballot Drop Sites

*\*Drive-up ballot drop access*

## Welches

**Hoodland Public Library**  
24525 E Welches Rd.  
Welches, OR 97067

## West Linn

**West Linn City Hall**  
22500 Salamo Rd.  
West Linn, OR 97068

**West Linn Public Library**  
1595 Burns St.  
West Linn, OR 97068

## Wilsonville

**Wilsonville City Hall\***  
29799 Town Center Loop E  
Wilsonville, OR 97070

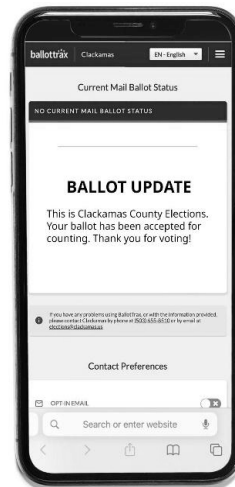
## How Do I Track My Ballot?



**Sign up to Track Your Ballot!** Trust that your vote counts with simple, secure, mail ballot tracking! Know where your ballot is in the voting process from mailed to accepted.

As a Clackamas County voter, you can sign up to receive alerts via text, phone, or email. Know when your ballot is mailed to you. After you vote and return your ballot, be alerted when it has been accepted for counting. Your vote remains anonymous and confidential.

Sign up online for **Track Your Ballot** at [clackamas.us/elections/track-your-ballot](https://clackamas.us/elections/track-your-ballot). This service is free for the voter.



**Clackamas County Elections**  
503-655-8510 | [elections@clackamas.us](mailto:elections@clackamas.us)  
[clackamas.us/elections](https://clackamas.us/elections)

## Clackamas County Commissioner, Position 2



### Jim Bernard

**Occupation:** Property Management

**Occupational Background:** Owner- Bernard's Garage (30 years), Clackamas County Board Chair; Clackamas County Commissioner; President North Clackamas Chamber; Founder Milwaukie Farmer's Market

**Educational Background:** Portland State University, Business Administration, BS

**Prior Governmental Experience:** Clackamas County Chair; Clackamas County Commissioner; Mayor of Milwaukie; Oregon Community Corrections Board

**Jim will build on his Record of Accomplishments to continue to Deliver for the Citizens of Clackamas County**

- **Bring Jobs and Economic Investment to the County**
- **Attract Funding for Roads, Bridges and Transit**
- **Improve our Environmental Stewardship**
- **Provide Fiscally Responsible Leadership**
- **Create Safer Neighborhoods**
- **Develop Affordable Housing Alternatives**
- **Reduce Homelessness and Addiction**
- **Advocate for Veterans' Services, Education, and Housing**
- **Support Families in Crisis and in Unsafe Situations**
- **Provide High Speed Internet Connectivity to Rural Areas**
- **Rebuild Relationships and Trust with Citizens, Businesses and Staff, as well as Local, State and Federal Partners**

**These are not empty promises like so many politicians make. These are real successes Jim Bernard has delivered to the citizens of Clackamas County as a local elected leader and longtime business owner in the County. Here are just some examples of his leadership:**

- Created good jobs for citizens within their local communities
- Attracted millions in funds for roads, transit and infrastructure
- Created the County Audit Committee to ensure proper use of funds, promoted transparency and secured AAA+ Bond Rating
- Established the Hospital Authority bringing millions in investments to the county
- Provided adequate funding for law enforcement, courts and community corrections
- Reduced homelessness and provided needed services to keep those in crisis on a path to recovery and stability
- Opened mental health and addiction treatment programs for at-risk individuals, short-term transitional housing and long-term affordable housing
- Funded the creation of the Family Justice Center to provide a safe environment for battered women, children and seniors

**Elect Jim Bernard for Clackamas County Commissioner. Experience and Effectiveness Matters.**

Go to [www.votejbernard.com](http://www.votejbernard.com) for more info and endorsements

*(This information furnished by Jim Bernard)*

## Clackamas County Commissioner, Position 2



### David Bush

**Occupation:** Small business owner, Entrepreneur

**Occupational Background:** Sheet Metal Worker, Auto Repair Shop Owner

**Educational Background:** Molalla High School, Local 16 5-year apprenticeship, Continuing Education for licenses and certifications

**Prior Governmental Experience:** None

Rooted in strong faith and guided by family values, David Bush believes that leadership starts with integrity, service, and commitment to community. As a small business owner, David understands the challenges that local families and businesses face every day and knows firsthand the importance of responsible leadership and common-sense solutions. Family comes first in everything he does, and that same dedication extends to serving the people of this county.

David is running for County Commissioner to bring fresh perspective, accountability, and positive change at the county level. With a heart for service and a deep respect for the community, David is committed to strengthening local businesses, supporting families, and ensuring that county government works for the people it represents.

#### Fiscal Accountability and Transparency

Our communities deserve accountability and transparency in government spending-without raising taxes or adding new fees. By focusing on efficiency and smart financial management, we can maintain essential services while respecting the financial burden already placed on families and local businesses.

#### Business Development

Strong businesses create strong communities. As County Commissioner, I will support business development by encouraging smart growth, cutting unnecessary barriers, and helping local businesses succeed.

#### Public Safety

As county commissioner, I will work to ensure our law enforcement, emergency responders, and public safety agencies have the resources and support they need to keep our communities safe. Strong partnerships, responsible budgeting, and proactive planning are essential to protecting families and businesses in our county.

It's time for a change!

Learn more about David at: [www.electdavidbush.com](http://www.electdavidbush.com)

*(This information furnished by David Bush)*

*The above information has not been verified for accuracy by the county.*

## Clackamas County Commissioner, Position 2



### Paul Savas

**Occupation:** Clackamas County Commissioner

**Occupational Background:** Small Business Owner 25 years; Aerospace Machinist

**Educational Background:** Oregon State University Extension Service; Cypress College

**Prior Governmental Experience:** Clackamas County Commissioner; Oak Lodge Sanitary Director; Oak Lodge Water Commissioner

Serving as Commissioner has been a great honor. Thank you for the trust you have placed in me. Here are some recent accomplishments and where I stand on the issues.

#### **AFFORDABILITY AND LIVABILITY:**

- Held the line on the budget—expanded essential services without raising taxes.
- Only urban county in Oregon to end the year with a fiscally sound budget.
- New libraries in Gladstone and Oak Grove and a new courthouse.

**“Paul’s focus is simple: deliver results, live within our means, and keep more money in your pocket.” – North Clackamas Chamber of Commerce**

#### **PUBLIC SAFETY:**

- Consistently supported fully funding the Sheriff’s Office and ensuring deputies have the resources they need.
- Proud to have the endorsements of the Clackamas County Peace Officers Association and our local firefighters.
- Secured investments in mental health and recovery to address prevention.

**“Paul has protected funding for law enforcement and earned our trust.” – Ben Wiley, President, Clackamas County Peace Officers Association**

#### **TRANSPORTATION:**

- Champion for rural roads, local control, and commuters.
- Stood firm for **NO TOLLS** in state transportation package.
- Advocating for transportation investments that reduce congestion.

#### **ENDORSEMENTS:**

I am proud to earn support from labor, business, and community leaders across Clackamas County, including:

AFSCME Local 350

Clackamas County Peace Officers Association

Home Building Association of Greater Portland

Northwest Oregon Labor Council, AFL-CIO

North Clackamas Chamber of Commerce

UFCW Local 555

IBEW Local 48

Ironworkers Local 29

Professional Firefighters of Clackamas County, IAFF Local 1159

District Attorney John Wentworth

#### **Mayors:**

Brian Hodson, Canby

Michael Milch, Gladstone Mayor

Joe Buck, Lake Oswego

Scott Keyser, Molalla

Denyse McGriff, Oregon City

Kathleen Walker, Sandy

Frank Bubenik, Tualatin

Rory Bialostosky, West Linn

Shawn O’Neil, Wilsonville

I will continue to be a commissioner for all residents. Please reach out to me if you need assistance.

[www.ElectPaulSavas.com](http://www.ElectPaulSavas.com)

*(This information furnished by Paul Savas)*

## Clackamas County Commissioner, Position 2



### Mark Shull

**Occupation:** Retired US Military

**Occupational Background:** USMC/US ARMY Lt Colonel (Ret), former President Shull Design and Development, Inc.

**Educational Background:** Oregon State University, Architecture, Bach Science; Command and Gen Staff College, Strategy/Operations, Diploma

**Prior Governmental Experience:**

Clackamas County Commissioner 2021-2024

The People’s Commissioner—for a stronger, more affordable Clackamas County

As your candidate for Clackamas County Commissioner, Position 2, I will continue to put residents first—fighting for lower taxes, less government overreach, and real solutions that protect our homes, wallets, and way of life.

- Time for Action, Not just Talk: Property Tax Relief for Seniors: I have a plan to provide a 3% county property tax rebate to all Clackamas County seniors age 65 and older who occupy their primary home, directly offsetting the Measure 50 annual 3% increase—your future financial security.
- No Tolling: I fought tolling from day one and will continue to oppose any tolls on I-205 or elsewhere—demanding accountability from ODOT instead of burdening drivers.
- Oppose Corporate Activity Tax: I stand against new or expanded taxes like the Corporate Activity Tax that hurt jobs and raise costs for families and business.
- Land Use Reform for Housing: Advocate for reforms to Oregon’s land use laws to free up more land for building affordable homes—addressing the housing crisis without endless regulations.
- Hardest-Working Commissioner: Unlike others who rarely are in their offices, I work tirelessly for you — listening to constituents, resolving problems, and delivering results every day.
- Equality, Not DEI/Equity Mandates: In my prior term, I eliminated DEI programs in county operations and will continue advocating for true equality of opportunity for all, without divisive equity policies.
- No Growth in Government Size: I will vote against any expansion of county government—cutting waste, holding down spending, and keeping costs low.
- Fight Metro Incursion: I will vigorously oppose Metro’s overreach into Clackamas County—protecting our local control and independence from Portland-area mandates.

*(This information furnished by Mark Shull)*

*The above information has not been verified for accuracy by the county.*

*The above information has not been verified for accuracy by the county.*

## Clackamas County Commissioner, Position 4



### Robert Kukish

**Occupation:** Owner Workingclass Iron Strength Training

**Occupational Background:** Carpenter/Foreman at R&H Construction

**Educational Background:** Central CT State University, Communication/Criminal Justice, BA

**Prior Governmental Experience:** None

Vote Rob Kukish - Clackamas County Commissioner, Position 4

Transparent government. Strong communities. Your voice in Clackamas.

Twenty years of working commercial construction projects taught me accountability matters.

When a project goes over budget, falls behind schedule, or loses community trust, there are real consequences. I'm running because county government needs that same discipline—honest budgets, transparent decisions, and leadership that answers to the people. Additionally, I've spent a decade coaching powerlifting and weightlifting, helping people build strength, discipline, and confidence.

Safe neighborhoods are the foundation of everything else we want to build—thriving businesses, good schools, vibrant parks. As commissioner, I will fully fund our sheriff, support our deputies, and ensure Clackamas County remains one of the safest places in Oregon to raise a family.

The homelessness crisis is not just a Portland problem—it is our problem. I will push for evidence-based solutions that combine housing access, substance abuse treatment, and mental health services. Compassion without accountability is not a strategy. We need measurable outcomes and we need to be honest with taxpayers about what is working and what is not.

Clackamas County's budget must be sustainable. Every dollar we spend is a dollar taken from a working family, a small business owner, or a retiree. I will scrutinize spending, oppose debt we cannot afford, and hold county government to the same standard I held every job site I ever ran—on time, on budget, no excuses.

Housing affordability is an urgent priority with unique challenges requiring creative solutions with consideration to ecologically sustainable land use and responsible development. Having worked in commercial construction for 20 years, I understand the realities of building in our region. We should encourage strategic growth, streamline permitting where possible, and support the development of housing that working families can afford without sacrificing the character of our communities.

*(This information furnished by Robert Kukish)*

## Clackamas County Commissioner, Position 4



### Brian O'Neill

**Occupation:** Northwest Regional Manager JD Steel, Inc.

**Occupational Background:** Field Superintendent, Operations Manager, Vice President. President for youth sports program North Clackamas 10 years, Youth Sports Coach 12 years. Advisor Fund committee North Clackamas school district, Advisory committee 2 years North Clackamas school

district. Served on Bond Committee for North Clackamas school district.

**Educational Background:** LaSalle High School, General, Diploma; Ironworkers local 29 Trade Sch, Ironworker trade 3 year prog, Journeyman; PCC, General, 1 year

**Prior Governmental Experience:** None

I have lived in Oregon my entire life and in Clackamas County for nearly sixty years. I have been married to my wife, best friend, partner, and matriarch of our family for nearly forty years. I have four adult children, three of whom live in Clackamas County, along with six granddaughters who all live in Clackamas County. I want to be a voice for my family, the citizens, cities, and businesses of Clackamas County.

We have become a reactive county instead of a proactive one. We wait for a major event (weather) to occur before a plan is developed. Do we have an adequate readiness plan in place for an earthquake?

We can't continue to kick the can down the road, putting deferred maintenance on the back burner with the idea that the next generation will need to take care of it. Our roads and bridges are a mess. We put up signs about weight limits for our bridges instead of fixing the issues. We no longer seal cracks in roads, allowing roads to deteriorate faster. In some cases, we avoid repairing county roads altogether within our road system.

This is not a call for additional taxes; it's a call to live within our means like every citizen and business is required to do. Instead of adhering to our budget, we move money from one budget item to another, eliminating much-needed programs without considering the impact on our business and citizens.

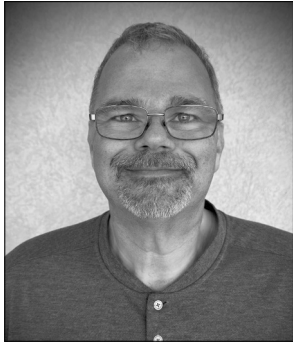
I'm ready to get to work!

*(This information furnished by Brian O'Neill)*

*The above information has not been verified for accuracy by the county.*

*The above information has not been verified for accuracy by the county.*

## Clackamas County Commissioner, Position 4



### Bill Osburn

**Occupation:** Rancher

**Occupational Background:**  
Small Business Owner / Truck Driver

**Educational Background:**  
OCHS/Rex Putnam, Diploma;  
Clackamas Community College, Criminal Justice, AGS

**Prior Governmental Experience:**  
Vice Chair Traffic and Safety

#### A Fresh, Independent Perspective

I believe government exists to serve the people, not dictate to them. It's time for a representative who listens first and acts with transparency and accountability. I am not bound by the silos of either political party. As a non-affiliated candidate, my only loyalty is to you.

#### Safety and Responsibility

- **Law Enforcement:** I stand firmly with our first Responders and law Enforcement to ensure our neighborhoods remain safe.
- **Infrastructure:** Our roads must be safe and well maintained, without excessive tax burden.
- **The Homeless Epidemic:** This needs to be tackled at its core, which is lack of proper mental healthcare vs costly temporary fixes that don't yield positive results.

#### Protecting Our Future and Our Past

- **Taxes:** You deserve a voice. I believe citizens should have a direct vote on any new tax proposals.
- **Metro:** It's time to evaluate our relationship with Metro. We must ensure this partnership benefits Clackamas County residents and provides a clear return on our investment.
- **Preservation:** We must protect our historic sites and local history before they are lost forever.
- **Housing:** I believe in affordable housing, ensuring our children and seniors can afford to stay in the community they love. I believe government is the problem. It's time to reduce the bureaucratic red tape, high development fees and over taxation that drive up costs.

As a lifelong resident born and raised in Clackamas County, my roots here run deep. My family history over 180 years is woven into this land, further strengthened by my Tribal connection to my Cayuse Ancestors. This isn't just a jurisdiction; it is home.

I am running to be your voice—a common-sense leader dedicated to keeping Clackamas County Affordable, Safe, and Accountable to the people.

*(This information furnished by Bill Osburn)*

## Clackamas County Commissioner, Position 4



### Diana Helm

**Occupation:** Clackamas County Commissioner

**Occupational Background:**  
Small Business Owner: Terra Casa, Fred Meyer: Principal Buyer

**Educational Background:** Linn-Benton CC, Business & Music Studies

**Prior Governmental Experience:**  
Mayor of Damascus, Sunrise Water Authority Board

#### LEADERSHIP, INTEGRITY, TRANSPARENCY

Commissioner Diana Helm has proven a strong voice for citizens of Clackamas County, advocating for affordable housing, streamlining permitting and addressing homelessness. Putting citizens of our county first is her north star. A longtime small business owner, Diana understands the importance small businesses are to our economic vitality.

#### FOCUS ON AFFORDABLE COMMUNITIES

Commissioner Helm has embraced the goal of building 900 more affordable housing units by 2030 and reduce regulatory burden by 2028 with timely permitting.

#### TAKING ON HOMELESSNESS AND ADDICTION HEAD ON

Our county is addressing the root causes of homelessness and addiction. Diana will continue her work to ensure shelter and recovery services are available for those in need.

#### PROMOTING SAFE NEIGHBORHOODS

Commissioner Helm strongly advocates for programs like Safe Routes to Schools. She is committed to keeping our communities safe and secure.

#### A CHAMPION FOR FAMILY WAGE JOBS

As a small business owner for many years, Diana knows that economic growth is key to expanding family wage jobs in Clackamas County. That's why Commissioner Helm testified at the Legislature this year helping successfully pass a bill that will give our farmers the opportunity to operate farm stores, agritourism events and farm-to-table dinners so our citizens can experience the farm firsthand.

#### TRUSTED VOICES STAND WITH DIANA

Lori Olund, President Miles Fiberglass  
United Food and Commercial Workers Local 555  
NW Oregon Labor Council  
Portland Metropolitan Association of Realtors  
Lake Oswego Chamber of Commerce  
Home Building Association of Greater Portland  
Portland Metro Chamber  
Dan Fowler, Business Leader  
Commissioner Ben West  
Commissioner Martha Schrader  
Former State Senator Betsy Johnson  
Former State Senator Rick Metsger  
District Attorney John Wentworth  
Wooden Shoe Tulip Farm  
Mayors: Scott Keyser, Molalla  
Sean Drinkwine, Estacada  
Michael Milch, Gladstone  
Brian Hodson, Canby

**And many more**

*(This information furnished by Diana Helm)*

## Clackamas County Commissioner, Position 4



### R W Smith

**Occupation:** Environmental Consultant

**Occupational Background:** Lean Production Manager. Shop Supervisor. Arborist Assistant. Caregiver for Individuals with Developmental Disabilities

**Educational Background:** University of Arizona, Environmental Studies, Bachelors; Seminole State College, Applied

Science, Associates

**Prior Governmental Experience:** Currently serving on Clackamas County Community Action Board (CAB). Currently serving on Community Climate Action Committee (CCAC).

#### CLACKAMAS VALUES. BIPARTISAN SOLUTIONS.

Clackamas County is my home. My family lives here, my children go to school here, and like many families we feel the pressure of rising costs. I'm running because the local government should work openly and responsibly for the people it serves. As your commissioner I will:

#### REDUCE COSTS FOR WORKING FAMILIES

Clackamas needs to be more affordable. I'll continue bringing together community and county leaders around solutions to this crisis.

- Irresponsible budgeting around our parks and courthouse have wasted millions in taxpayer dollars. Residents shouldn't be asked to foot the bill for poor planning.
- We must limit large corporations from buying up our housing supply and pushing families out of the market.
- To lower skyrocketing utility rates, we need to build new clean energy capacity while ending subsidies to massive data centers.

#### END UNSHELTERED HOMELESSNESS

We must move unhoused neighbors off our streets and into recovery-oriented care. These conditions are inhumane; the status quo has gone on far too long.

- We need more treatment options and more shelter beds for people experiencing severe addiction and mental health challenges.
- The best way to reduce homelessness is to prevent it in the first place by building more affordable housing.

#### KEEP OUR COMMUNITY SAFE

Everyone deserves to feel safe in their neighborhood. But the fentanyl crisis is tearing apart families and devastating communities across our region.

- Our police and first responders must have the resources and tools they need to keep our communities safe.
- While the federal government is targeting immigrants, we will stand up for our neighbors and ensure families have access to the support they need.

Learn more at: [FriendsOfRemySmith.org](http://FriendsOfRemySmith.org)

#### Endorsements

Democratic Party of Clackamas County  
Council President Will Anderson (Milwaukie)  
Councilor Adam Khosroabadi (Milwaukie)

*(This information furnished by RW Smith)*

## Clackamas County Commissioner, Position 4



### Pete Wease

**Occupation:** Mortgage Banking

**Occupational Background:** Mortgage lending and sales; Regional Vice President, NW Regional Area Manager, Market Leader of Oregon, Washington and Idaho.

**Educational Background:** Portland State University, BS, Psychology; Portland Adventist Academy, Diploma

**Prior Governmental Experience:** None

My background is not as a politician. I'm a listener, a steward, and someone who believes in building a sound and lasting foundation for my community and future generations.

I'm a husband, a father of three boys, rooted in Oregon my entire life.

I've worked in mortgage banking for over 30 years. That means I understand budgets, risk, accountability, and what it means when financial decisions affect real families. Numbers aren't abstract to me - they represent people's homes, livelihoods, and futures. That discipline applies to managing a county budget and ensuring taxpayer dollars support essential services like public safety, health programs, and infrastructure.

My connection to Clackamas County runs deep. I've lived in Milwaukie most of my life. The only time I left Oregon was to work at the Perkins School for the Blind in Massachusetts — where I met my wife Sharon. When my father passed away, we came straight home to care for family. Oregon isn't just where I live. It's who I am.

I'm running for County Commissioner Position 4 because this position deserves someone who will be straight with you. Someone who reads the fine print, asks hard questions about how taxpayer money is spent, and shows up with honest answers. My career has been built on trust — you don't last 30 years in the mortgage industry without it.

Clackamas County is growing, and the decisions made in the next few years will shape it for decades. I want to be at that table — guiding those decisions with common sense, financial discipline, and genuine respect for the people who make this county home.

If you want someone committed to listening, protecting taxpayer resources, and planning responsibly for the future — I'd be honored to earn your vote.

*(This information furnished by Pete Wease)*

The above information has not been verified for accuracy by the county. The above information has not been verified for accuracy by the county.

## Clackamas County Commissioner, Position 5



### Ben West

**Occupation:** Clackamas County Commissioner; Registered Nurse - Cardiology; Lieutenant, United - States Navy Reserve

**Occupational Background:** Med-Surgical, Correctional, Community Health Nursing

**Educational Background:** Master of Nursing, Liberty University; BS-Nursing, Linfield University

#### Prior Governmental Experience:

Wilsonville City Council; Co-Chair, Metro Supportive Housing Services Task Force; Local Public Safety Coordinating Council; Association of Oregon Counties Board Member; Association of Oregon & California Lands Representative

#### STOP THE GAS TAX!

I stood firm against the Governor's record-high gas tax, which burdens families and businesses. I lead the fight against I-205 tolling. Voters are frustrated that politicians ignore how Oregon has become unsafe, unlivable, and unaffordable. As Commissioner, I promise to listen and fight back against out-of-touch governance.

#### PUBLIC SAFETY

"Ben is a strong supporter of law enforcement, committed to fully funding police budgets and holding criminals accountable. He is dedicated to protecting our communities, especially against unchecked crime spilling over from Portland." - **Clackamas Peace Officers' Association**

"Ben's unique RN background provides an invaluable policy perspective. A true partner to first responders, we trust his deep understanding of public health and safety to serve our county."  
- **Professional Firefighters of Clackamas County IAFF Local 1159**

#### **Proudly endorsed by Portland Area District Attorneys:**

John Wentworth, DA, Clackamas County  
Kevin Barton, DA, Washington County

#### HOMELESSNESS CRISIS

"Ben is the foremost leader addressing the homelessness crisis. Thanks to his dedication, Clackamas County's policies are rooted in an effective recovery-oriented system of care. As Multnomah County struggles, Ben is quickly moving people off the streets and into treatment." - **Martha Schrader, Commissioner, Clackamas County**

"Ben is a trusted partner who brings pragmatic, comprehensive solutions that have helped families and reduced homelessness in Clackamas County." - **Mayor Joe Buck, City of Lake Oswego**

#### ECONOMIC GROWTH

"Ben understands what it takes to grow the economy and how to attract investors and industry back to Oregon. He's a champion for growth, small businesses, and job creators." - **Portland Metro Chamber**

**I would appreciate your vote.**

Learn more about me at and see my full list of endorsements at:  
[www.benwest.us](http://www.benwest.us)

*(This information furnished by Ben West)*

## Clackamas County Commissioner, Position 5



### Sonya Fischer

**Occupation:** Family Attorney, Small Business Owner

**Occupational Background:** Clackamas County District Attorney Special Prosecutor; Program development for children, family, domestic violence programs

**Educational Background:** Warner Pacific University, Bachelors; PSU, Public Administration, Masters; Lewis and

Clark, J.D.

**Prior Governmental Experience:** Budget Committees for Lake Oswego and Centennial School District; County Commissioner

**"As President Trump raises prices and undermines our fundamental freedoms, we need local leaders like Sonya Fischer holding the line."**

- Attorney General Dan Rayfield

#### **The Change Clackamas County Needs**

As a mom of a daughter with disabilities, Sonya Fischer has always advocated for those who go unheard and underserved. When county government was failing kids like her daughter, Sonya fought back to fix a broken system.

Now she's running to fix what's broken on the County Commission

- **BRINGING COSTS DOWN for Families and Seniors.** Pushing back on utility rate increases, banning tolling, and building more homes that families can actually afford.
- **HOLDING GOVERNMENT ACCOUNTABLE** to deliver better services for people and small businesses before asking for more of our hard-earned tax dollars.
- **KEEPING US SAFE** by funding the sheriff's office and getting people off our streets and into shelters or permanent housing.

"Commissioner Ben West can't be trusted to look out for us because he's too busy looking out for himself: Getting cushy government jobs for family members and spouting Donald Trump's dangerous policies. It's time for a new direction. I support Sonya Fischer.

- Deb Barnes, Retired NCS D Teacher

"Commissioner West wants to weaken Oregon law that ensures law enforcement resources stay local and do not assist lawless, masked ICE agents terrorizing our communities. I'll never put politics before our community's safety."

- Sonya

#### Sonya's Supporters:

U.S. Senator **Jeff Merkley**

Congresswoman **Janelle Bynum**

Clackamas Sheriff **Angela Brandenburg**

State Senators (Clackamas) **Mark Meek, Courtney Neron**

**Misslin**

State Representatives (Clackamas) **Daniel Nguyen, Jules**

**Walters**

Oregon City Mayor **Denyse McGriff**

Former Wilsonville Mayor **Julie Fitzgerald**

Former Milwaukie Mayor and CEO of North Clackamas Chamber  
**Wilda Parks**

And more:

[www.SonyaFischer.com](http://www.SonyaFischer.com)

*(This information furnished by Sonya Fischer)*

*The above information has not been verified for accuracy by the county.*

Official Clackamas County May 19, 2026 Primary Election Voters' Pamphlet

*The above information has not been verified for accuracy by the county.*

C - 13

## Clackamas County Assessor



### **Bronson W Rueda**

**Occupation:** Clackamas County Assessor

**Occupational Background:** Oregon Department of Revenue; Commercial Fee Appraiser; United States Army

**Educational Background:** University of Portland, Criminal Justice, Bachelor of Science; IAAO, Appraisal Courses, Certificates; Willamette University,

Public Management, Modules; Appraisal Institute, Appraisal Courses, Certificates

**Prior Governmental Experience:** Treasurer/Secretary, Oregon Association of County Tax Collectors; Budget & Finance Committee Chair, Oregon State Assessors and Tax Collectors Association

Hello Clackamas County voters. As my first 4-year term is coming to an end, I want to let you know I have upheld my promises made to you in my initial campaign, including:

1. Pursuing the highest standards in customer service.
2. Administering Oregon's property tax laws in a fair and equitable manner.
3. Advocating for technology that produces efficiencies while maintaining fiscal responsibility.

During the next four years as your County Assessor, I will continue to promote my original promises. I encourage you to contact my office if you have questions regarding property tax laws since many of them can be complex and confusing. I strongly feel the more educated we all are about Oregon's property tax laws, the better position we will be in to understand the challenges, benefits, and opportunities we have. On the surface, property tax may seem like an inconvenience to owning real or personal property, but it is one of the financial backbones that help keep our county safe and an attractive place to live. I welcome your call or personal visit anytime.

Thank you in advance for your support.

*(This information furnished by Bronson W Rueda)*

## Clackamas County Justice of the Peace



### **Kathleen Rastetter**

**Occupation:** Justice of the Peace, Clackamas County

**Occupational Background:** Justice Court Judge Pro Tem; Senior Attorney Clackamas County Counsel; Parter, Cosgrave Vergeer Kester law firm

**Educational Background:** Rutgers Law School, Law, Juris Doctor; Order of the Coif; Purdue University, Nutrition Sciences with honors, Bachelor of Science

**Prior Governmental Experience:** Justice Court Judge Pro Tem, Oregon State Bar Disciplinary Board

I have over thirty years of legal experience practicing civil, employment, appellate and tax law. I am committed to continuing to serve the public as the Justice of the Peace. I strive to fairly and impartially apply the law while treating everyone with dignity and respect.

My past and present community engagement includes:

- North Clackamas Chamber of Commerce
- JOIN, a homeless assistance nonprofit organization
- Dress for Success, a nonprofit assisting women returning to the workforce
- Oregon State Bar Board of Governors
- Campaign for Equal Justice Board of Directors
- Oregon Women Lawyers (President 2013)
- Federal Bar Association of Oregon (President 2003)

*(This information furnished by Kathleen Rastetter)*

*The above information has not been verified for accuracy by the county.*

*The above information has not been verified for accuracy by the county.*

## Metro Council, President



### Juan Carlos González

**Occupation:** Metro Councilor, District 4; Chief Strategy Officer, Centro Cultural

**Occupational Background:** Non-Profit Executive

**Educational Background:** Forest Grove High School; Georgetown University, B.A.

**Prior Governmental Experience:** Metro Council (2018-present)

“Together, we will forge a Greater Portland where working families are supported, where young people can plant roots, where elders can retire with dignity, and where we build big projects that will change lives for generations”

- Juan Carlos Gonzalez

#### Juan Carlos' Proven Leadership

- Delivered 5,600 affordable homes under budget and ahead of schedule
- Championed living wage jobs for working families
- Led smart solutions to make public transit safer and efficient
- Strengthened investments in our public parks and natural habitats

#### A Shared Prosperity Agenda for Our Future

- **Affordable Housing:** Build more homes so working families can live and grow in the communities they love
- **A Thriving Economy:** Advance regional investments that bring good jobs, support small businesses, and unite our communities
- **Safe Transportation:** Ensure working people can reliably and affordably get around the region
- **Parks & Environment:** Invest in our public parks and natural resources

“Juan Carlos is a dedicated, collaborative leader who’s already delivered real solutions to our communities. He’ll be a Metro President that represents the urgent needs of Clackamas County on our regional government” - **Joe Buck, Mayor of Lake Oswego**

“I look forward to working with Juan Carlos to strengthen our business community and build on his achievements to uplift our local economy.” - **Katherine Lam, CEO of Bambuza**

#### Proudly endorsed by:

U.S. Senator Ron Wyden

U.S. Senator Jeff Merkley

Congresswoman Suzanne Bonamici

Congresswoman Andrea Salinas

Oregon Attorney General Dan Rayfield

Metro Council President Lynn Peterson

Metro Councilors Ashton Simpson,

Duncan Hwang & Christine Lewis

State Senator Kayse Jama

State Representatives Daniel Nguyen & Mark Gamba

Clackamas County Chair Craig Roberts

West Linn Mayor Rory Bialatosky

Milwaukie Mayor Lisa Batey

Willamette Women Democrats

Building Power for Communities of Color

North Coast States Carpenters Union

Northwest Oregon Labor Council

Columbia Pacific Building Trades Council

Full list at [Gonzalez4Oregon.com](http://Gonzalez4Oregon.com)

*(This information furnished by Gonzalez for Oregon)*

## Metro Council, President



### Chris Christensen

**Occupation:** Retired/ Entrepreneur/Author

**Occupational Background:** Mortgage Consultant, Loan officer, Business Owner, Entrepreneur, Affordable Housing Consultant, Former Brewer at Blitz-Weinhard Brewery, Adjunct Professor

**Educational Background:** UCSD Extension, Certificate Coursework, Urban Planning; University of

San Diego, B.A. Degree, English/Business Administration; Jesuit High School, Portland Oregon, High School Diploma; Chapman Elementary School, Portland, Oregon, Clackamas Community College (1998); Real Estate School of Oregon (1995); American School of Mortgage Banking (1998).

**Prior Governmental Experience:** 2020 Congressional Candidate, Oregon Congressional District 1 (2020); 2022 U.S. Senate Candidate-Oregon; Registered Lobbyist, City of Portland (2020); Bridgeton Neighborhood Committee (1995).

As a fifth-generation Oregonian, I care deeply about the future of our region and the quality of life we all share.

Oregon is a remarkable place to live, work and raise a family. With thoughtful leadership and responsible planning, we can strengthen our communities, improve housing affordability, and protect the natural beauty that makes our region special.

As your Metro Council President, I will champion smart urban infill development and urban renewal, strengthen neighborhoods, and protect the farms, forests and open spaces that define our region. Thoughtful growth planning can create walkable, livable communities where homes, shops, parks and workplaces are connected.

A thriving region depends on vibrant small businesses, beautiful parks, and strong arts and cultural communities that bring us together and support a healthy economy.

We must also address our serious challenges, including homelessness and mental health, with practical, compassionate solutions that restore safety and stability.

I will work to protect our valuable agricultural lands, ensuring thoughtful decisions about development pressures including large data centers that threaten our farmlands and regional identity.

Metro must operate with fiscal discipline and stewardship of taxpayer dollars. I will lead with transparency and accountability, and a commitment to listening.

Together, with your vote, we can build stronger neighborhoods, a vibrant, thriving economy, and a region we are all proud to call home.

*(This information furnished by Chris Christensen)*

## Metro Council, President



### Ken Ross

**Occupation:** Code Compliance Officer; Public Safety Agent; Juvenile Counselor

**Occupational Background:** Public safety; municipal government; juvenile justice; labor representation; community advocacy

**Educational Background:** Paralegal coursework; DPSST Certified Instructor; Oregon

Inspector Certification (OIC)

**Prior Governmental Experience:** Union officer; public employee; community advisory work

I oppose gas tax increases that punish working families while political insiders protect the status quo. I am running for Metro Council President as an independent candidate because leadership should answer first to the voters, not political succession, special interests, or institutional endorsements.

For more than 35 years, I have served on the front lines of public service, working directly with communities, workers, and youth affected by government decisions. Throughout my career, I have not hesitated to challenge institutional corruption, demand accountability, and stand up for those whose voices are too often ignored.

Our region must also bring economic growth back in ways that protect working families and strengthen local communities. That means encouraging responsible development, supporting good-paying jobs, and pursuing innovative solutions that make our region affordable and livable again.

Metro must pursue creative housing strategies. If Portland Public Schools closes schools, Metro should partner with local governments to repurpose surplus school sites into mixed-income housing for working families, seniors, teachers, and first-time homebuyers while preserving valuable community assets.

This election presents a clear choice: continue along the current path supported by institutional insiders, or choose independent leadership grounded in frontline experience and accountability to the public.

Across our region, residents see promises made but trust strained and workers too often unheard. Restoring confidence in public institutions requires transparency, independent oversight, and leaders willing to challenge the status quo.

My priorities are simple:

- Independent oversight and transparent governance
- Protection for whistleblowers and frontline workers
- Strong public services and institutional stability
- Innovative housing solutions that strengthen working families

Metro's future should be shaped by the people of our region—not by special interests or political insiders. I respectfully ask for your support on May 19, 2026.

*(This information furnished by Ken Ross)*

## Metro Auditor



### Brian Evans

**Occupation:** Auditor

**Occupational Background:** 18 years of government auditing experience, Certified Internal Auditor and Certified Government Auditing Professional

**Educational Background:** Master's Degree, International Public Affairs, University of Wisconsin-Madison; Bachelor's Degree, International Affairs, Lewis

and Clark College

**Prior Governmental Experience:** Principal Management Auditor, Metro; Senior Economist, Business Oregon; AmeriCorps VISTA

Metro Residents,

You deserve transparent and accountable government. That's why I am running for reelection. The Auditor's Office provides objective and independent information about Metro's programs and services. The performance audits I lead make recommendations to increase efficiency, effectiveness, and equity.

#### RESPONSIVE TO THE PUBLIC

Voters approved ballot measures for supportive housing services, park and natural areas, and the Oregon Zoo in recent years. As Metro Auditor, I have audited each of these programs to ensure they deliver the promises made to voters.

Other recent audits focused on governance, equity, and ethics to respond to public concerns. The First Opportunity Target Area audit found out of date income limits reduced the number of people who could participate in the program. I also completed an audit that looked at public meetings, public records, lobbying, and contracts. Finally, two recent audits identified improvements to better manage ethics and conflicts of interest.

#### EXPERIENCE AND KNOWLEDGE TO BE SUCCESSFUL

I have a strong record of improving government. Over 18 years I completed performance audits of almost every aspect of Metro's operations including Portland's Centers for the Arts and Oregon Convention Center. I also audited internal functions like finance and information technology which are key to the success of all Metro programs.

#### HOLDING GOVERNMENT ACCOUNTABLE

I center the public point of view. My goal is to show you what has been accomplished and where more work is needed. Being an advocate for the public improves services and increases accountability. As Metro Auditor, I will bring integrity, independence and continuous improvement to everything I do.

Read audit reports at:

<https://www.oregonmetro.gov/audits>

**VOTE BRIAN EVANS FOR METRO AUDITOR**

*(This information furnished by Brian Evans)*

The above information has not been verified for accuracy by the county.

## Metro Council, District 1



### Ashton Simpson

**Occupation:** Metro Councilor, Small Business Owner

**Occupational Background:** Construction Project Engineer, Nonprofit Leader, U.S. Air Force (Retired)

**Educational Background:** Portland State, B.S.

**Prior Governmental Experience:** Portland Metro Workforce Development Board, Joint

Policy Advisory Committee on Transportation

#### Fierce Advocate, Proven Leader

A proud resident of East County, Ashton is fighting for us. Ashton knows our communities deserve their fair share, but our streets are less safe, we have fewer parks, and people must travel farther for work, shopping, and recreation. That's why he's:

- Expanded training on public projects for family-wage careers in construction, especially for underserved communities.
- Directed efforts with cities and counties to build more housing and reduce homelessness.
- Delivered transportation investments to improve safety and congestion in East Portland.

#### Driven to Serve

Ashton knows many are struggling. Growing up seeing how government neglect impacted his neighborhood, Ashton has become a champion for his community. At Metro, he works relentlessly to reverse decades of disinvestment and provide for the people of East Portland and East County.

Ashton's priorities:

**Providing A Fair Share for East County  
Keeping East County Affordable  
Creating Dignity, Determination, & the Tools to Thrive  
Building Neighborhood Community and Vibrancy  
Rejecting Trump's Division and Hate**

"Together, we can continue creating an East Portland that supports every part of our community, and everyone who calls it home."  
**Ashton Simpson**

Endorsed by:

**Oregon Working Families Party  
NW Oregon Labor Council  
Columbia Pacific Building Trades Council  
Portland Metropolitan Association of Realtors  
Portland Metro Chamber  
Oregon League of Conservation Voters  
Building Power for Communities of Color  
North Coast States Carpenters Union  
Teamsters Joint Council No. 37  
UFCW 555**

**Oregon Futures Lab & Color PAC  
East County Rising**

**Latino Network Action Fund  
Home Building Association of Greater Portland  
Portland Fire Fighters' Association, IAFF Local 43  
Portland For All**

**Mayors** Travis Stovall (Gresham), Jairo Rios-Campos (Wood Village), Dave Ripma (Troutdale), Keith Wilson (Portland)  
**Metro Councilors** Juan Carlos Gonzalez, Christine Lewis, Duncan Hwang

**Rep** Ricki Ruiz, **Rep.** Zach Hudson  
**Gresham City Councilor** Eddy Morales

[www.ashtonformetro.com](http://www.ashtonformetro.com)

*(This information furnished by Ashton for Metro)*

## Metro Council, District 1



### Noah Ernst

**Occupation:** In-House Council/ Superintendent, Radio Cab Company

**Occupational Background:** Attorney, Small Business Owner, Taxicab Driver

**Educational Background:** University of Oregon, J.D.; Central Washington University, B.A. Art, Philosophy

**Prior Governmental Experience:**

Candidate, Portland City Council District 1 (2024); decade of advocacy before Portland City Council on transportation policy

[noah4metro.com](http://noah4metro.com).

I've spent my career solving problems in the real world as a small business owner, litigation attorney, and taxi driver. I've seen metro from every angle - boardrooms, back seats, courtrooms, and 3 a.m. pickups on 82nd Avenue. I am running to be the voice that's missing for working people in East Multnomah County.

I'm not a career politician or a special-interest insider. My real-world experience taught me something Metro's current leadership hasn't learned: when you spend money results matter: **fiscal responsibility matters.**

Metro has collected over \$1.3 billion in homeless services taxes since 2021. Homelessness has increased by 61%. Metro has spent hundreds of millions on transportation projects since 2019. Metro's data shows traffic fatalities increased by over 30%. Public transportation ridership remains below pre-covid levels.

That's not progress. That's lack of accountability and management failure, and we're all paying for it.

**Homelessness:** I will demand independent performance audits, measurable outcomes for every dollar spent, and an end to using one-time funding for ongoing programs. Taxpayers deserve transparency and results.

**Garbage and Core Services:** Metro's auditor found 'widespread issues' at transfer stations: safety failures, untrained workers, and risky financial practices. Meanwhile, our rates keep going up. I'll bring the accountability to Metro's core services that I'm demanding for homeless spending.

**Transportation:** East County has the highest traffic fatality rates in the region and traffic congestion is being made worse. I'll fight to decrease congestion, improve public transportation, and prioritize projects that actually reduce fatalities.

**The incumbent had 4 years. It's time for a new direction AND BETTER REPRESENTATION FOR DISTRICT 1.**

#### Endorsements

Multnomah County Deputy Sheriffs Association

Partnership for Progress

12 for PDX

Future Portland

Radio Cab

Additional endorsements at [noah4metro.com](http://noah4metro.com)

*(This information furnished by Friends of Noah Ernst PAC #23430)*

*The above information has not been verified for accuracy by the county.*

Official Clackamas County May 19, 2026 Primary Election Voters' Pamphlet

*The above information has not been verified for accuracy by the county.*

C - 17

## Metro Council, District 2



### Christine Lewis

**Occupation:** Metro Councilor;  
Nonprofit Director

**Occupational Background:**  
Policy Analyst

**Educational Background:** B.A.,  
Reed College; B.S., University of  
Pennsylvania

**Prior Governmental Experience:**  
Policy Analyst, State Legislature;  
Multnomah County; City of  
Portland; Bureau of Labor and

Industries

**Community Involvement:** Willamette Falls Locks Authority

#### WORKING FOR OUR COMMUNITIES!

Dear neighbors,

In my first two terms I've elevated our community voices at Metro for strong and vibrant neighborhoods, a robust economy, and a responsive regional government.

- We **partnered with local governments to provide additional resources** so more people can access safe and affordable housing.
- I've **pushed back hard on unfair tolling schemes** and worked for fairer alternatives. Investments are needed in neighborhood streets and transit service—we need a transportation system that works for everyone.
- We are **opening up more parkland** for families to enjoy, like Oregon City's Newell Creek.
- Metro is working with local businesses and economic leaders to **attract economic activity**, supporting job-ready lands, workforce development, and education.
- We have **increased investments that reduce trash dumping** in our public spaces, and have spearheaded innovations in reuse to divert targeted waste from the landfill.
- I've **led the efforts to reopen the Willamette Falls Locks** and am committed to public access and restoration around the falls—an incredible community treasure.

There is a lot of work to do. I am asking for your vote so we can continue to meet these challenges together.

- Christine Lewis

#### Supporters

**Oregon League of Conservation Voters  
Willamette Women Democrats**

**UFCW 555**

**NW Oregon Labor Council, AFL-CIO  
AFSCME Local 3580**

**Building Power for Communities of Color  
Portland Metro Chamber**

**Mayor Lacey Beaty, Beaverton  
Mayor Rory Bialostosky, West Linn  
Mayor Joe Buck, Lake Oswego  
Mayor Denyse McGriff, Oregon City  
Mayor Tom Ellis, Happy Valley  
Mayor Keith Wilson, Portland  
Councilor Brett Sherman, Happy Valley  
Councilor Adam Marl, Oregon City  
[www.ChristineLewisForMetro.com](http://www.ChristineLewisForMetro.com)**

*(This information furnished by Christine Lewis)*

## Clackamas County Elections

Two locations to serve you!

### \*\*Clackamas County Elections\*\*

County Elections Office

1710 Red Soils Ct., Suite 100

Oregon City, OR 97045

### \*\*Happy Valley Vote Center\*\*

**Open May 4 – Election Day, May 19**

inside the Happy Valley Library

13793 SE Sieben Park Way

Happy Valley, OR 97015

#### Hours at both locations:

Monday – Friday, 8:30 a.m. – 5 p.m.

Saturday, May 16, 10 a.m. – 2 p.m.

Election Day, May 19, 7 a.m. – 8 p.m.

#### At each voter service location, citizens can:

- replace a lost or damaged ballot,
- update voter registration information,
- get voting assistance if you have a disability,
- get voting assistance in a preferred language,
- return your voted ballot,
- vote in person.

#### Clackamas County Elections

503-655-8510 | [elections@clackamas.us](mailto:elections@clackamas.us)

[clackamas.us/elections](http://clackamas.us/elections)

*The above information has not been verified for accuracy by the county.*

# CLACKAMAS COUNTY MEASURE 3-633

REFERRED TO THE PEOPLE BY THE DISTRICT BOARD

**Caption:** Five-Year County Sheriff Public Safety Local Option Levy

**Question:** Shall Clackamas County fund law enforcement with rate of 53.4 cents per \$1,000 assessed value for five years beginning 2027?

This measure may cause property taxes to increase by more than three percent.

**Summary:** This measure would replace the current Public Safety Levy which was approved by voters in 2021 and expires in 2026. Approval of this levy will allow the Clackamas County Sheriff's Office to:

-Support community safety in every part of Clackamas County by providing approximately:

-34 patrol deputies responding to emergency calls for service and patrolling our roadways

-5 detectives to investigate elder abuse/neglect cases, human trafficking, and felony crimes against persons

-Maintain 84 jail beds by funding 30 jail deputies. These 84 beds opened upon the passage of the first levy in 2006 and have reduced the number of prisoners released into the community.

-Maintain funding for:

26 mental health/medical jail beds by funding 6 jail deputies. body-worn camera program.  
2 internal affairs investigators.

Sheriff's specialized drug enforcement team targeting drug traffickers and those involved in drug-related crimes such as identity theft, property crimes, child abuse and neglect.

This measure would cost 53.4 cents per \$1000 of assessed value. The cost would be approximately \$15.95 per month, or \$191.34 per year, on a home with an assessed value of \$358,313 (the median assessed value of a home in Clackamas County). It is estimated the proposed rate would raise \$37.68 million in 27-28, \$39.08 million in 28-29, \$40.52 million in 29-30, \$42.02 million in 30-31 and \$43.58 million in 31-32.

The estimated tax cost for this measure is an ESTIMATE ONLY based on the best information available from the county assessor at the time of the estimate and may reflect the impact of early payment discounts, compression and the collection rate.

## EXPLANATORY STATEMENT

Clackamas County voters approved the first Clackamas County Public Safety Local Option Levy in 2006, reapproving levies in 2011, 2016 and 2021. The levy provides a portion of the funding for county public safety services.

The current levy, approved in 2021, will expire on December 31, 2026. Measure 3-633 will replace the expiring levy.

The expiring levy provides funding for the following services:

- 84 jail beds in the Clackamas County Jail
- 36 Sheriff's jail deputies
- 26 mental health/medical jail beds
- 34 Sheriff's patrol deputies
- 5 Sheriff's Detectives
- Sheriff's specialized drug enforcement team
- Body-worn Camera Program
- 2 internal affairs investigators

A yes vote on Measure 3-633 would maintain those services by changing the existing Public Safety Local Option Levy tax rate from 36.8 cents to 53.4 cents per \$1000 of assessed value, an

The full text of this measure is available online at [www.clackamas.us/elections](http://www.clackamas.us/elections)

increase of 16.6 cents per \$1000 of assessed value. That would equal \$191.34 per year for a home at the median assessed value of \$358,313.

A yes vote on Measure 3-633 would:

- Maintain 84 jail beds in the Clackamas County Jail that were opened since the initial passage of the levy in 2006, reducing the number of prisoners released early into the community;
- Provide funding to retain 36 current Sheriff's jail deputies;
- Maintain 26 mental health/medical jail beds;
- Retain 34 current Sheriff's patrol deputies responding to emergency calls for service and patrolling our roadways;
- Continue the Sheriff's specialized drug enforcement team to arrest drug traffickers and those involved in drug-related crimes such as identity theft, property crimes, and child abuse/neglect;
- Retain 5 Sheriff's detectives to investigate elder abuse/neglect cases, child abuse/neglect cases, human trafficking, and felony crimes against persons;
- maintain Sheriffs body-worn camera program; and
- Retain 2 internal affairs investigators.

This levy is limited to the five-year fiscal period from 2027 through 2032. Future renewals of this levy would not occur without voter approval. The money raised by this measure must be used exclusively for the law enforcement purposes stated in this Ballot Title.

This measure would cost 53.4 cents per \$1000 of assessed value (this is different than the real market value). The cost would be approximately \$15.95 per month, or \$191.34 per year, on a home with an assessed value of \$358,313 (the median assessed value of a home in Clackamas County). It is estimated the proposed rate would raise \$37.68 million in 2027-28, \$39.08 million in 2028-29, \$40.52 million in 2029-30, \$42.02 million in 2030-31 and \$43.58 million in 2031-32.

Explanatory Statement Furnished by the Clackamas County Sheriffs Office

**NO ARGUMENTS IN OPPOSITION TO THIS  
MEASURE WERE FILED**

## CLACKAMAS COUNTY MEASURE 3-633

### ARGUMENT IN FAVOR:

A Message from Clackamas County Sheriff Angela Brandenburg

#### The Clackamas County Public Safety Levy is How We Keep Our Community Safe

#### Please Renew It by Voting Yes on Measure 3-633

As your Sheriff, it is truly an honor to serve you. My priority is simple: keep Clackamas County a safe place to live, work, and raise a family.

For the past four years, Clackamas County has been the safest county in the Portland metro area. That is the result of the hard work and dedication of the men and women of the Sheriff's Office, made possible by the continued support of voters through the Public Safety Levy.

First approved by voters in 2006 and renewed since then, the levy fund essential public safety services, including:

- 34 Deputies who patrol our communities
- 86 Jail beds to keep dangerous offenders from being released early into our community
- 36 Jail Deputies
- 26 mental health and medical jail beds
- 5 Detectives who investigate serious crimes
- Sheriff's specialized drug enforcement team that targets drug trafficking
- The Sheriff's Office body-worn camera program
- Programs that protect victims of domestic violence, child abuse, and crimes against seniors

The current Public Safety Levy is expiring at the end of 2026. Measure 3-633 will continue funding necessary to maintain the staffing and services critical in keeping Clackamas County safe.

Without this continued funding, the Sheriff's Office will face significant reductions in patrol, investigations, and jail operations, impacting our ability to serve you.

I am proud to work alongside the dedicated men and women of the Sheriff's Office who put their lives on the line to serve and protect you every day. I am asking you to **please join me in voting Yes on Measure 3-633** so together we can keep Clackamas County the safest county in the metro area.

Angela Brandenburg  
Clackamas County Sheriff

*(This information furnished by Angela Brandenburg)*

*The above information has not been verified for accuracy by the county.*

## CLACKAMAS COUNTY MEASURE 3-633

### ARGUMENT IN FAVOR:

#### A MESSAGE FROM

Craig Roberts

Clackamas County Commission Chair  
Former Clackamas County Sheriff

Dear Clackamas County Voter:

Before I became Clackamas County Commission Chair, it was my honor to devote my professional law enforcement career to the safety of the people and communities of Clackamas County, serving as your Sheriff for the last 16 of those 40 years. Keeping our communities safe is a partnership with the citizens we serve. There is no greater example of that partnership than the Clackamas County Public Safety Levy.

Soon after taking office in 2005, our county was facing a critical public safety challenge. We were facing the closure of 84 jail beds, lacked adequate 24-hour patrol in many parts of the county, and were threatened with cuts to other essential services. I created a Blue-Ribbon Committee of community leaders and business owners. Their top recommendation was to place a Public Safety Levy on the ballot in 2006 to provide the resources necessary to help make our citizens safer.

Clackamas County voters approved the first levy in November 2006 and overwhelmingly approved renewals of the levy in 2011, 2016 and 2021 making it a fundamental part of our public safety system.

Over time, I am proud that the Sheriff's Office has kept the promises of that original levy:

- Focus on the services most important to keep our communities safe
- Being accountable and spending funds only on what voters approved

Measure 3-633 keeps faith with that vision. Now, Clackamas County is the safest county in the Portland Metro area, and the Levy is a big reason why.

**Please join me in voting YES on Measure 3-633 to continue Clackamas County's Public Safety Levy.** And thank you for your continued support of public safety and safe communities.

Craig Roberts

Paid for by Roberts for Clackamas ID#12514

*(This information furnished by Craig Roberts)*

*The above information has not been verified for accuracy by the county.*

## CLACKAMAS COUNTY MEASURE 3-633

### ARGUMENT IN FAVOR:

#### Sheriff's Levy Statement in Support

NAMI Clackamas is the grassroots non-profit organization providing free mental health education, support, and advocacy delivered by people with lived experience to improve quality of life for everyone in our community since 1978.

NAMI Clackamas and the Clackamas County Sheriff's office have successfully partnered closely together over many years to:

- Offer mental health classes three days each week in our County Jail
- Host a weekly Peer Support Group in the Jail
- Provide mental health resources for family members each week in the Clackamas County Mental Health Courts, and
- Provide Crisis Intervention Team (CIT) training for law enforcement officers to improve communication, identify mental health resources for those in crisis, and ensure officer and community safety.

**NAMI Clackamas supports this Sheriff's Levy renewal** because it would, among other things:

- Maintain 84 beds in the Clackamas County Jail that were opened since the initial passage of the levy in 2006
- Provide funding to retain 36 current Sheriff's jail deputies
- Maintain 26 mental health/medical jail beds
- Retain 34 current Sheriff's patrol deputies responding to emergency calls for service and patrolling our roadways
- Maintain Sheriff's body-worn camera program.

Jail and law enforcement are not the solutions to mental health in our community, but jail and law enforcement continue to be a critical link in safely and humanely housing our incarcerated community members experiencing symptoms of a mental health condition. Our Sheriff's Office and jail are excellent partners with NAMI Clackamas to ensure mental health education, support, and advocacy within our local criminal justice system.

**This measure deserves our support to maintain these important services in our community.** Thank you for your consideration.

*(This information furnished by Dave Hunt, NAMI Clackamas)*

*The above information has not been verified for accuracy by the county.*

## CLACKAMAS COUNTY MEASURE 3-633

### ARGUMENT IN FAVOR:

#### Vote Yes on Measure 3-633

Clackamas Women's Services partnered with the Clackamas County Sheriff's Office and community leaders to establish A Safe Place Family Justice Center, which provides coordinated services for individuals impacted by domestic violence, sexual assault, human trafficking, stalking, and elder abuse. This model brings together law enforcement, community-based organizations, legal advocacy, and social service providers to enhance our public safety system and support victims on their pathway to safety and healing.

Measure 3-633 would maintain key public safety resources that support this work. These include patrol deputies who respond to emergency calls, specialized units that investigate serious crimes such as domestic violence, child abuse, human trafficking, and elder abuse.

The measure would also continue the Sheriff's body-worn camera program, which plays a vital role in transparency, accountability, and public trust. In cases involving interpersonal violence, these tools can contribute to evidence collection and support investigative processes. For the broader community, they reinforce confidence in our public safety systems.

In addition, the levy would sustain jail capacity, including beds designated for individuals with mental health and medical needs, as well as staffing necessary to operate these services. These resources are intended to support public safety and reduce the likelihood of early releases due to capacity limitations.

This measure supports safety, accountability, and prevention. Investing in a coordinated, multidisciplinary approach strengthens our ability to respond effectively to violence and helps interrupt cycles of harm, reducing impacts on individuals, families, and future generations.

Clackamas County has long demonstrated a commitment to innovative, collaborative public safety solutions. Measure 3-633 would maintain existing programs and staffing that contribute to that coordinated response.

**Please vote Yes on Measure 3-633.**

Melissa Erlbaum, MPA

(Melissa Erlbaum is the Executive Director for Clackamas Women's Services and has over 30 years of experience in victim services)

*(This information furnished by Melissa Erlbaum)*

*The above information has not been verified for accuracy by the county.*

# CLACKAMAS COUNTY MEASURE 3-633

## ARGUMENT IN FAVOR:

### PUBLIC SAFETY MATTERS!

In November 2006 Clackamas County Board of Commissioners initiated a 5-year public safety levy to address general fund shortages for the Sheriff's Office.

The levy is a vital source of **dedicated** funding for essential law enforcement functions and used for 84 jail beds, 30 jail deputies, 26 mental health jail beds, 34 patrol deputies, 5 detectives, drug enforcement team, body-worn cameras, 2 internal affairs investigators.

The levy was created to combat the effects of being understaffed, highlighting the need to **maintain** services to prevent a 37% deputies' reduction.

5-Year levies give voters an opportunity to evaluate their success. A review of the voter's renewal approval agree public safety is a high priority. Clackamas County Sheriff's Office has become the safest county in the metro area.

	Average assessed value at the time	
2006 24.8 cents per \$1000	\$200,000	Annual \$50
2011 24.8 cents per \$1000	\$200,000	Annual \$50
2016 24.8 cents per \$1000	\$267,000 up	Annual \$66 +\$16
2021 36.8 cents per \$1000 up \$0.12 (50%)	\$267,000	Annual \$98 +\$32
2026 53.4 cents per \$1000 up \$0.16 (45%)	\$358,313 up	Annual \$191 +\$93

The levy has provided critical funding to safeguard adequate staffing, fast emergency response times, the reduction of early inmate releases, increased rural patrols, the protection of children, improved criminal investigations and the continuation of critical public safety programs. Without this funding, our community risks losing deputies, specialized units, and the proactive services that help prevent crime before it happens.

Sheriff Brandenburg, awarded 2025 Sheriff of the Year by Oregon State Sheriffs' Association has strengthened public safety, advanced the profession, identified inefficiencies and served her community with transparency and accountability. Rather than adding new programs, during an economic inflationary time for property owners, especially seniors and families living on fixed incomes, she recommended covering increased costs just to **maintain** the departments existing services, to ensure residents the protections they deserve.

### Support Measure 3-633

Shirley Morgan  
Rhododendron Rural Resident

*(This information furnished by Shirley Morgan)*

*The above information has not been verified for accuracy by the county.*

# CLACKAMAS COUNTY MEASURE 3-633

## ARGUMENT IN FAVOR:

### Vote Yes on 3-633 to Keep Clackamas County One of the Safest Communities in Oregon

As the Clackamas County District Attorney, and prosecutor for over 30 years, I am proud of the partnership between my office and the Clackamas County Sheriff's Office in making Clackamas County one of the safest communities in Oregon.

Since 2006, as Clackamas County's population continues to grow and demand for law enforcement services increase, the Public Safety Levy has provided critical funding for patrol deputies to respond to emergencies, detectives to investigate elder abuse, child abuse, human trafficking, drug trafficking and felony person crimes, and funding for jail beds to hold offenders accountable ensuring we are safe while in public and in our homes.

The Public Safety Levy also provides essential funding for body worn cameras that aid not only in transparency, but also the successful prosecution of offenders.

As District Attorney, I understand high quality investigations, holding offenders accountable, and the public's trust are essential to the successful functioning of the criminal justice system. This Public Safety Levy provides the women and men of the Clackamas County Sheriff's Office with the training, tools and staffing they need to meet this need.

### Please join me in voting YES on Measure 3-633

Together, we will continue to ensure Clackamas County remains one of the safest and most livable communities in Oregon.

John Wentworth  
District Attorney, Clackamas County

*(This information furnished by John D. Wentworth)*

*The above information has not been verified for accuracy by the county.*



**What if I did not receive a ballot?**

If you do not receive a ballot by May 7, 2026 call Clackamas County Elections at 503-655-8510.

**What if I need assistance voting?**

Voters with disabilities, or those needing assistance voting in a language other than English, may contact Clackamas County Elections for voter assistance or interpretation services.

**What if I make a mistake on my ballot?**

You may simply cross out your mistake, write "not this," and circle the intended choice.

**What if I change my mind after I have returned my ballot?**

As soon as you deposit your ballot in a mailbox or at an official ballot drop site, your ballot has been cast. A new ballot cannot be issued.

**Does my ballot have to be returned by mail?**

No. You may return your ballot by mail or drop it off at any Official Ballot Drop Site in the state. If you mail your ballot we recommend returning it one week before Election Day.

**Do I need a stamp on the envelope to return my ballot?**

No, stamps are **NOT** required to mail your ballot back to Clackamas County Elections.

**When must my ballot be returned?**

If you send your ballot through the U.S. Mail, it must be postmarked by Election Day, Tuesday May 19, or, you can drop off your ballot at any official ballot drop box in Oregon by **8 p.m. on Election Day, Tuesday May 19.**

**When is Clackamas County Elections open on Election Day, May 19?**

On Election Day, Clackamas County Elections will open at 7 a.m. and close at 8 p.m. at two voter service locations.

- Clackamas County Elections office at 1710 Red Soils Ct., Suite 100 in Oregon City
- Happy Valley Vote Center inside the Happy Valley Library at 13793 SE Sieben Park Way in Happy Valley.

503-655-8510 |

[elections@clackamas.us](mailto:elections@clackamas.us)  
[clackamas.us/elections](http://clackamas.us/elections)



**Mail Early!  
Signature Required!  
Postmarks Count!**

Your ballot can be accepted if your mailed ballot envelope is:

- Signed,
- Postmarked on or before Election Day,
- If mailed, received at the Clackamas County Elections office no later than 5 p.m., 7 days after Election Day.

We recommend mailing your ballot no later than one week before Election Day.

Ballots can be returned to any official ballot drop site until 8 p.m. on Election Day.

**Please make sure to sign your ballot envelope!** Your signature is checked and must match the signature on record so that your ballot can be counted.

**Clackamas County Elections**

503-655-8510 | [elections@clackamas.us](mailto:elections@clackamas.us)  
[clackamas.us/elections](http://clackamas.us/elections)

# CITY OF LAKE OSWEGO

## MEASURE 3-635

REFERRED TO THE PEOPLE BY THE CITY COUNCIL

**Caption:** Funding South Shore Fire Station Reconstruction to Improve Community Safety

**Question:** Shall Lake Oswego rebuild the South Shore fire station to improve community safety by issuing \$20.6 million in bonds?

**Summary:** If approved, this measure would permit the issuance of general obligation bonds to demolish the existing South Shore Fire Station (built in 1971) and build a replacement station.

A new station would modernize the building to keep response times low, provide upgraded safety for firefighters, and meet seismic standards.

A task force evaluated alternative options, including continuing renovations and closing the station, and recommended reconstructing the station. Today's building codes and environmental laws make remodeling more expensive than new construction. In addition, the crew quarters must be rebuilt as they cannot be reinforced to meet today's seismic standards for essential facilities, leaving firefighters and the community vulnerable in an earthquake.

If the measure is rejected, the current station will remain in service as long as it is safe to be used, but it will likely need to be closed in the future.

The bonds are estimated to cost \$0.19 per \$1,000 of assessed property value annually. Actual rates may vary based upon interest rates and changes in assessed value.

### EXPLANATORY STATEMENT

#### Background of South Shore Fire Station

Constructed in 1971, the South Shore Fire Station, located at 1880 South Shore Boulevard, is the oldest of Lake Oswego's four fire stations. While the station primarily serves the southeast quadrant—including Lakeridge High School, Hallinan Elementary School, Luscher Farm, Lake Oswego Recreation and Aquatic Center, Mary's Woods, and the Stafford Retirement Community. South Shore Fire Station functions as part of a city-wide emergency response system. Personnel, vehicles, and equipment from this station respond to critical incidents and medical emergencies throughout the entire Lake Oswego community.

#### Facility Deficiencies & Earthquake Safety

A City Council-appointed Community Task Force evaluated the facility and determined the South Shore Fire Station has reached the end of its useful life. The building does not meet current seismic standards for essential public facilities such as fire stations, schools, or hospitals. The Task Force found that existing crew quarters cannot be reinforced to meet essential facility seismic standards. After evaluating alternatives, the Task Force determined that renovating the existing structure was not economically feasible compared to the cost of constructing a new, earthquake safe facility.

#### Health & Operational Improvements

If approved, the measure would fund the construction of a new facility designed to include:

- **Decontamination Areas:** Dedicated spaces designed to reduce firefighter exposure to cancer-causing materials commonly encountered when fighting fires.
- **Modern Vehicle Bay:** Expanded storage space to accommodate modern emergency vehicles and equipment like the marine rescue boat and trucks used for wildfire response that do not fit in the current 1971 structure.

The full text of this measure is available online at [www.clackamas.us/elections](http://www.clackamas.us/elections)

- **Operational Readiness:** Facility designed to maintain the city's current emergency response goals, including the target of reaching 90% of high-priority calls within 8 minutes or less.

#### Proposed Measure & Financial Impact

After evaluating alternatives, including renovation and closing the South Shore Station, the Task Force recommended a full replacement funded by general obligation bonds because current building codes and environmental regulations make remodeling the 1970s materials more expensive than new construction. The City Council reviewed the Task Force recommendations and submitted this measure for voter consideration.

Measure 3-635 authorizes the issuance of up to \$20.6 million in general obligation bonds to demolish the existing structure and construct a new station at the current location.

The bonds are estimated to cost property owners approximately \$0.19 per \$1,000 of assessed property value annually. For a home with an assessed value of \$600,000, the estimated annual cost would be \$114.

If the measure is rejected, the \$20.6 million in bonds will not be issued, and the property tax will not be imposed. The current station would remain in service only as long as it is deemed safe for use, but it would not be upgraded to meet modern seismic, health, or safety standards.

**NO ARGUMENTS IN OPPOSITION TO THIS  
MEASURE WERE FILED**

## CITY OF LAKE OSWEGO MEASURE 3-635

### ARGUMENT IN FAVOR:

#### YES for Public Safety

A **YES** vote supports building a new fire station that meets the **current and future needs of our community**.

#### Why vote YES:

- Faster, more reliable emergency response
- Safer working conditions for firefighters
- Modern facilities designed for today's emergencies
- Improved readiness during fires, medical calls, and disasters
- Long-term cost savings by building now instead of delaying

Our firefighters serve the community around the clock, often working extended hours in outdated facilities. A new station reflects what we now know about firefighter safety, health, and emergency response.

- **Facility Upgrade:** Built in 1971, South Shore Fire Station needs modernization, improvements that will enhance accessibility and provide a safe functional space for our responders and community.
- **Vehicle & Equipment Storage:** Weather exposure shortens the life of emergency vehicles. Secure storage will protect equipment and reduce maintenance costs.

Delaying this investment increases future costs and risks. Acting now allows thoughtful planning and strengthens public safety for decades to come.

A **YES** vote is an investment in safety, reliability, and the future of Lake Oswego Fire Department. Stand with your Professional Firefighters of Lake Oswego who stand with you.

**Vote YES to protect our community**

**Vote YES on Measure 3-635**

**Professional Firefighters of Lake Oswego, IAFF Local 1159**

*(This information furnished by Mark Oelschlager, Professional Firefighters of Clackamas County, IAFF Local 1159)*

*The above information has not been verified for accuracy by the county.*

## CITY OF LAKE OSWEGO MEASURE 3-635

### ARGUMENT IN FAVOR:

#### Lake Oswego City Council Urges a YES Vote on Measure 3-635

As the elected leaders representing Lake Oswego, we recognize that **public safety** is a vital city service, an essential element that makes our city a great place to live. We also strive to be responsible stewards of public funds and city facilities.

Our 2025 community survey results underscored just how much our residents value our superior fire and medical emergency services.

We know that city-wide coverage and **short response times** for emergency services save lives and are critical for ensuring the safety of our residents, homes, and businesses.

Measure 3-635 is the next step in a project that began in earnest in 2024 with a citizen Task Force that explored options for the 55-year-old Fire Station 212 on South Shore Blvd. The Task Force evaluated potentially remodeling or relocating the station. The Task Force concluded that the most responsible and cost-effective option is to rebuild at its current location.

Measure 3-635 will raise funds needed to rebuild Station 212 with:

- **A larger drive-through apparatus bay** that will accommodate modern fire engines.
- **Decontamination space** for firefighter turnout gear.
- **Healthy facilities and modern bunkrooms** for crews who reside at the station while on duty for 24-hour shifts.

Rest assured, our Lake Oswego Fire Department has a plan in place to ensure full service from the current site during construction.

As your elected representatives, we believe that this investment is critical to provide a modern, efficient, and safe emergency services building that will serve our city for decades to come.

**Please join us in supporting Measure 3-635 to keep Lake Oswego a safe place to live.**

Mayor Joe Buck  
Councilor Ali Afghan  
Councilor Trudy Corrigan  
Councilor Massene Mboup  
Councilor Aaron Rafp  
Councilor Rachel Verdick  
Councilor John Wendland

*(This information furnished by Joe Buck, Mayor, Lake Oswego City Council)*

*The above information has not been verified for accuracy by the county.*

## CITY OF LAKE OSWEGO MEASURE 3-635

### ARGUMENT IN FAVOR:

#### Rebuild Committee Advocates Voting YES on Measure 3-635

In 2024, the City of Lake Oswego created a Task Force to study future options for the aging South Shore Fire Station. Many of us served on this task force. When the City Council decided to move forward with the rebuild project, we formed a citizen committee to advocate for passing Measure 3-635.

The Task Force concluded that:

- Abandoning the South Shore station is not feasible, due to the negative impact on response times for the south and east neighborhoods of the city.
- Remodeling the existing station would involve tearing down and rebuilding every area of the building, including the structural frame.
- Relocating to another site is not feasible, as the current location is optimal.

Measure 3-635 seeks voter approval of a bond to fund rebuilding the station at its current site, including costs for temporary space to ensure full coverage during construction.

**Over the past year, our citizen committee has been meeting with neighborhood associations, senior living centers, and community groups to educate voters on this important topic.**

Learn more by visiting [www.lakeoswegofirestationrebuild.com](http://www.lakeoswegofirestationrebuild.com) and the city's website at [www.lakeoswego.city/SouthShoreFireBond](http://www.lakeoswego.city/SouthShoreFireBond).

To see the current condition of the South Shore station for yourself, **attend an open house** on Saturday, May 2 from 1-3 p.m.

**Most importantly, please vote YES on Measure 3-635.**

Lake Oswego Fire Station Rebuild Committee

Chris Durkee, Director	Carole Ockert
Jeff Gudman, Director	Virginia Perelson
Carrie Love, Director	Mignon Reynolds
Kenneth Allen	Nancy Sage
Kianna Angelo	Karen Sampson
Lindsey Boccia	Derrith Schmidt
Patrick Cechini	Aidan Shannon
Buzz Chandler	Ellen Steel
Jenny Cherrytree	Daniel Taylor
Robert Ervin	Gale Wallmark
Ross Fearey	David Westerdahl
Jonathan Harrell	Elisa Williams
Mary Kay Larson	

*(This information furnished by Chris Durkee,  
Chair, Lake Oswego Fire Station Rebuild Committee)*

*The above information has not been verified for accuracy by the county.*

## CITY OF LAKE OSWEGO MEASURE 3-635

### ARGUMENT IN FAVOR:

#### Lake Oswego School Board Endorses Bond to Rebuild South Shore Fire Station

##### **Safety Is Foundational to Student Success**

As elected members of the Lake Oswego School Board, our first responsibility is the safety, well-being, and success of our students. That responsibility extends beyond school buildings. Safe, resilient public infrastructure protects the children, families, and staff we serve every day.

##### **A Critical Facility in Urgent Need**

The South Shore Fire Station must be rebuilt to meet modern safety and seismic standards. Replacing this aging facility will improve working conditions for first responders, strengthen emergency preparedness, and ensure reliable service during disasters. A resilient station benefits not only South Shore neighborhoods, but all of Lake Oswego.

##### **Geography Makes Readiness Essential**

Our city's layout makes emergency access uniquely challenging. With Oswego Lake at the center and train tracks that can divide east and west, we depend on all four fire stations operating at full strength. Lake Oswego's emergency response times are among the best in the region, state, and nation, increasing survival rates during medical emergencies. Maintaining that level of protection requires facilities built for today's demands.

##### **Strong Schools Require Strong Community Systems**

When families trust that emergency services are dependable and close at hand, students can focus on learning, and educators can focus on teaching. Public safety and educational excellence go hand in hand.

##### **Broad Community Support**

This project reflects thoughtful planning, community-wide backing, and a shared commitment to safety and resilience. The Lake Oswego School Board proudly endorses this bond measure and encourages our families and neighbors to join us.

##### **Vote YES on Measure 3-635**

Kirsten Aird, Board Chair  
Neelam Gupta, Board Vice Chair  
Brian Bills, Board Director  
Katherine Lupton, Board Director  
John Wallin, Board Director

*(This information furnished by Kirsten Aird,  
Lake Oswego School Board)*

*The above information has not been verified for accuracy by the county.*

## CITY OF LAKE OSWEGO MEASURE 3-635

### ARGUMENT IN FAVOR:

#### LOCAL BUSINESSES SAY YES TO THE BOND!

The Lake Oswego Chamber of Commerce, representing more than 475 local Lake Oswego businesses, proudly endorses Measure 3-635 to rebuild the South Shore fire station.

**Safe, modern emergency facilities are essential to a strong local economy.** Lake Oswego firefighters respond to more than 5,000 calls each year, nearly 70% for medical emergencies, and almost all are certified paramedics, the highest level of EMS training.

Lake Oswego's unique geography presents real challenges. With a lake at the center of our city and major roads frequently blocked by trains, emergency access can be delayed. Without the South Shore station, response times in the south and east areas of our city would increase significantly.

**Our business owners value the safety of our customers, employees, and neighbors.** Rebuilding the South Shore station to modern safety standards will help ensure fast, reliable emergency response, protecting lives, property, and our local economy.

We encourage you to review the full Measure 3-635 proposal to learn more about why rebuilding the South Shore station is necessary, the cost of the bond, and how fire and medical services will continue uninterrupted during construction.

**Investing in public safety is investing in Lake Oswego's future.**

**Please join the Lake Oswego Chamber of Commerce Board of Directors in voting YES on Measure 3-635.**

Lake Oswego Chamber of Commerce Board of Directors  
148 B Avenue, Suite 100

*(This information furnished by Liz Hartman,  
Lake Oswego Chamber of Commerce)*

## CITY OF LAKE OSWEGO MEASURE 3-635

### ARGUMENT IN FAVOR:

#### 100 Neighbors and Still Counting!

We are your Lake Oswego neighbors supporting Measure 3-635 to rebuild the South Shore Fire Station. A modern, safe station helps protect lives and property and is worth the modest property tax needed to fund it. What is it worth knowing help can reach every corner of our city when it matters most?

**Please join your neighbors in voting YES on Measure 3-635.**

Dean Azimi	Robert Heape
Betty Barber	Dashel Hinrichs
Bob Barman	Ray & Sherry Howell
Joy Bell	Dustin & Britteny Hume
Barbara Bogdan	Sandra Jacobson
Alain Bohbot	Steven & Robin Kalota
William Brooks	Stephen & Morgann Kesler
Charles Buck	William & Rachel Korach
Stephen & Joan Call	Steve Kruss
Polly Candelori	Alyce LaGasse
Dean Carson	Kevin Larson
Lotus Cheong	Cyrus Lee
Roger Chinn	Shelly Lipkin
Barbara Christianson	Stephanie Lippincott
Gerald & K. Eileen Christopher	Sara Maletis-Sharp
Christa Coleman	Jackie Edmunds Manz
Josh & Adria Condon	Susan Mawdesley-Haines
Steven Connolly	Bruce McCluney
David Corey	Pat McDonald
Ellen Cowie	Sara McKean
Tom & Margorie Linda Croft	Smita Mehta
John & Barbara Cullicott	Peter Melrose
Udip Dahal	Heather Mewborn
Megan Decker	Bonnie Mitchell
Mark Denies	Sara Morse
William Denney	Caroline Natwick
Andrew DiMasi	Karl Ockert
Jean Donovan	Wendy Odiaga
Travis Duncan	Jonathan Oliveira
Mehmet Dundar	Patricia Ostrom
Kit, Timothy & Abigail Durkee	Liza Parker
Rick Eilers	Claire Potter
Christa-Marie Engle	Joseph Sawyer
Alfred Fagundes	Michael Allen Schmidt
Kevin Faris	Carl & Jane Schmits
Joe Fearey	Susan Schrader
Melissa Framiglio	Kevin Semonsen
Tim Froelich	Jeff Sharp
Christian Gadke	Kenneth Slickers
Raymond Gaffney	Ellen Smith
Jim Galvez	Dan & Sarah Stafford
Richard & Carole Gates	Kinneth Stewart
Julie Gehlbach	Jonathan Thies
Nancy Gehring	Alan & Michelle Trunnell
Chris Giles	Elizabeth Vilanove
Mark Grimm	Lauren Visoria
Ann Guns	Mark Warye
Philip & Lynn Guzie	Jeffrey Wiens
Jeanette Hamilton	James Wolper
David & Kathleen Hammerstrom	Betsy Wosko

*(This information furnished by Jeff Gudman)*

*The above information has not been verified for accuracy by the county.*

*The above information has not been verified for accuracy by the county.*

**CITY OF LAKE OSWEGO  
MEASURE 3-635**

**ARGUMENT IN FAVOR:**

**My Personal Gratitude for Lake Oswego Paramedics**

I am so grateful to the multiple teams of paramedics from several different Lake Oswego Fire Stations who arrived at my home a few days before Christmas to answer my panicked call. My husband was having a cardiac event, and they were at my home in just a few minutes.

Although my husband died of a heart attack while on the way to the hospital, I will forever be grateful for the quick and heroic efforts of these well-trained men and women. They even had a designated firefighter letting me and my family know what was happening and what they were doing every step of the way. I learned that they had the same equipment and medications that were used in an emergency room. I also learned that every LO firefighter is also a trained paramedic. I truly believe my husband, Mike Lavios, got the best care possible.

Although we live closest to the South Shore fire station, there were teams from several other LO stations there to assist. The coordination and communication between teams was impressive.

No matter where you live in Lake Oswego, I urge you to vote in favor of the new South Shore fire station.

Frederique Lavios  
Lake Oswego resident

*(This information furnished by Frederique Lavios)*

*The above information has not been verified for accuracy by the county.*

**CITY OF LAKE OSWEGO  
MEASURE 3-635**

**ARGUMENT IN FAVOR:**

**Vote YES to Protect Our Beautiful City**

We love Lake Oswego and all of its natural areas. We also want them protected by ensuring modern emergency service facilities are located throughout the city.

**We endorse Measure 3-635** to raise funds for rebuilding the South Shore fire station. Consider all the places near this station where you or your family might need emergency help:

- LORAC and LO Golf Course
- Hazelia Field
- George Rogers Park
- Oswego Lake or Willamette River
- Luscher Farm
- Lakeridge High School
- Rassekh Park
- Mary's Woods

The South Shore station, home to Lake Oswego Fire Department's **water rescue boat**, is called on to help boaters and water enthusiasts on local lakes and rivers. Additionally, after the station is rebuilt with a larger apparatus bay, it will house the department's **wildlands brush truck** in this strategic location. This specialized 4-wheel-drive truck is equipped with a 350-gallon water tank and pump, enabling quicker response to fires in wildlands, parks, and natural areas often inaccessible to larger fire engines.

**We believe the cost of rebuilding the fire station is reasonable and necessary to preserve and protect our community.**

**Please join us in voting YES on Measure 3-635.**

- Arts Council of Lake Oswego
- Friends of Luscher Farm
- Friends of Springbrook Park
- Friends of Waluga Park
- Lake Grove Fire District #57
- Mary's Woods Board of Directors
- Mary's Woods Residents' Council
- Oswego Lake Watershed Council
- Prep LO
- Stafford Hamlet
- Stafford-Tualatin Valley CPO
- Wild Geese Farm @ Luscher Farm
- WLLO Village

*(This information furnished by Lindsey Boccia)*

*The above information has not been verified for accuracy by the county.*

## CITY OF LAKE OSWEGO MEASURE 3-635

### ARGUMENT IN FAVOR:

#### Our Neighborhoods Are United For Measure 3-635

We represent voters in neighborhoods across Lake Oswego and across the political spectrum. We are united in our support of Lake Oswego Measure 3-635, because having modern emergency facilities located throughout our city is critical for the **safety of ALL city residents and visitors.**

Nearly 70% of calls to Lake Oswego fire stations are for medical assistance. And nearly all Lake Oswego firefighters are **licensed paramedics – this is very rare!** When you call 911 for help, nobody asks about your politics, income, or religion. A well-trained crew from one of the four stations responds immediately to assist you. For acute medical issues, two crews are dispatched. **Because of this, the survival rate for cardiac arrest in LO is almost twice the national average!**

Without the South Shore station, response times for a large portion of our city would increase significantly to unacceptable levels. In a life-threatening situation, every second counts.

**Our emergency crews stand ready to assist you at any time, day or night.** We can show them our respect and appreciation for their service and commitment by building a modern, efficient, and safe station that will serve our community for generations.

**It's time to take action and stand together on this important issue. Vote YES on Measure 3-635!**

Atherton Heights Home Owner's Assn  
Bella Terra Home Owner's Assn  
Blue Heron Neighborhood Assn  
Evergreen Neighborhood Assn  
First Addition / Forest Hills Neighborhood Assn  
Glenmorrie Neighborhood Assn  
Lake Forest Neighborhood Assn  
Lakewood Neighborhood Assn  
Mary's Landing Neighborhood Assn  
McVey South Shore Neighborhood Assn  
Neighborhood Chairs Committee  
Old Town Neighborhood Assn  
Oswego Pointe Village Condominium HOA  
Palisades Neighborhood Assn  
Rosewood Neighborhood Assn  
Skylands Neighborhood Assn  
Sunny Hill Home Owner's Assn  
Uplands Neighborhood Assn  
Waluga Neighborhood Assn  
Westridge Neighborhood Assn

*(This information furnished by Carole Ockert, Past Chair, Neighborhood Chairs Committee)*

## Make a Plan to Vote



### Your Vote Counts!

Make sure your voice is heard by voting in the May 19, 2026 Primary Election.

### Make a plan to vote.

- **Do you know where you will receive your ballot?** Is your registration up-to-date?
- **When will you vote?** Ballots are mailed to voters April 29 and are due Election Day, May 19 by 8 p.m.
- **How will you return your ballot?**

**By Mail** - Must be postmarked by Election Day, May 19. No stamp required. Mail back one week before Election Day.

**By Official Ballot Drop Box** - Must be deposited by 8 p.m. on Election Day, May 19.

### Don't forget to sign!

Your ballot cannot be counted if you do not sign the return envelope. Every signature is checked against the registration signature on file, and the signature must match for the ballot to be verified and counted.

### Questions?

Contact Clackamas County Elections  
503-655-8510 | [elections@clackamas.us](mailto:elections@clackamas.us)  
[clackamas.us/elections](https://clackamas.us/elections)

*The above information has not been verified for accuracy by the county.*

# Return Your Ballot

by Election Day, May 19, 2026  
at 8 p.m.

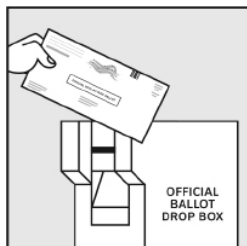
**Mail:** Stamps are **NOT** required! Ballots must be postmarked by Election Day and received by Clackamas County Elections no later than 5 p.m., May 26.

We recommend mailing your ballot back at least one week before Election Day.



**Official Ballot Drop Site:** Official ballot drop sites are available April 29, through Election Day, May 19, 2026 at 8 p.m. for convenient and secure deposit.

Official Ballot Drop Sites are listed in this pamphlet.



**Your voted ballot may be dropped off at any Official Ballot Drop Site in Oregon.**

The Secretary of State's official ballot drop box locator is: [oregonvotes.gov/dropbox](https://oregonvotes.gov/dropbox)

## Clackamas County Elections

503-655-8510 | [elections@clackamas.us](mailto:elections@clackamas.us)  
[clackamas.us/elections](https://clackamas.us/elections)

## CITY OF RIVERGROVE MEASURE 3-637

*REFERRED TO THE PEOPLE BY THE CITY COUNCIL*

**Caption:** Five-Year Local Option Levy for General Operations

**Question:** Shall the City of Rivergrove impose a \$.50 per \$1,000 assessed value for five-years for general operations beginning 2026-27? This measure may cause property taxes to increase more than three percent.

**Summary:** Revenue from this measure will support general city functions and help ensure that planning, engineering and legal services are available when needed. These services enable informed decision-making, timely review, and compliance with state and local requirements. The measure will also support efficient city operations and improve the City of Rivergrove's ability to serve residents effectively and transparently. The requested rate will raise approximately \$63,000 in fiscal year 2026-2027.

### EXPLANATORY STATEMENT

The City of Rivergrove is asking voters to consider a five-year local option levy to fund general city operations.

Rivergrove does not have a permanent property tax base. The City currently relies primarily on approximately \$37,000 per year in franchise fees and about \$10,000 in State of Oregon shared revenue to support operations. These revenues fund basic administrative and operational needs but are limited in scope.

If approved, the levy would authorize a property tax rate of \$0.50 per \$1,000 of assessed value for five years, beginning in fiscal year 2026-2027. Based on current assessed values, the levy is estimated to raise approximately \$63,000 annually. At this rate, a property with an assessed value of \$500,000 would pay approximately \$250 per year.

Revenue from the levy would be used for general city operations. This may include services such as planning, engineering, legal support, and other administrative functions necessary for compliance with state and local requirements and for day-to-day city operations.

The measure would provide an additional, temporary funding source to support the City's ability to carry out its responsibilities. The levy would expire after five years unless renewed by voters.

Approval of the measure may result in property taxes increasing more than three percent a year.

The full text of this measure is available online at [www.clackamas.us/elections](https://www.clackamas.us/elections)

**CITY OF RIVERGROVE  
MEASURE 3-637**

**ARGUMENT IN FAVOR:**

I strongly urge all Rivergrove citizens to approve a ballot measure for the May election that asks for approval of an operating levy assessment of \$0.50 per \$1000 assessed property value. Unlike most cities, Rivergrove has no city property tax.

The City believes there is an upcoming financial crisis looming for our general fund. Although we provide annual "in lieu of audit" documents to the state each year, a petition of over 30 residents required us (by state law) to have a full audit performed. This will cost \$19,700 when our general fund's current balance is about \$25,000. By law, this audit could be required every year if only 30 residents petition for it. We have had to engage the City Attorney to defend against an ethics complaint from a councilor. We have a pending issue with the boat ramp refurbishing that is currently in litigation and will likely cost at least \$20,000 to defend. All our other funds by law cannot be used.

Citizens are encouraged to examine financial statements found in the agenda packets for city council meetings. See the <https://www.cityofrivergrove.org/> website council-agendas tab.

If the City becomes insolvent and thus must dissolve, it will have serious consequences for citizens. Those properties on sewer will be incorporated into Lake Oswego and all others may be also. That is the findings of our current City Attorney and the previous (now retired) one. The tax rate for Lake Oswego is \$4.97 per \$1,000 assessed value, ten times what we are asking.

*(This information furnished by William Tuttle)*

*The above information has not been verified for accuracy by the county.*

**CITY OF RIVERGROVE  
MEASURE 3-637**

**ARGUMENT IN OPPOSITION:**

There has never been a need in Rivergrove to consider a tax levy.

Current City records reflect financial solvency even after doubling the City Manager's salary while Citizens get frustrated over her refusal to provide public notices and respond to record requests per Resolution 22 and ORS Chapter 192.

The City's annual expenditures have always been below \$150,000 to remain without a need for a tax levy and the annual audits defined in ORS 297.435. In 2024, the ORS 297.435 limit was increased to \$250,000 giving Rivergrove even more room to remain free of a tax levy. It is not clear why there should be an issue.

Metro public records evidence a \$229,789 contract with Rivergrove for development of Stark Boat Ramp to accommodate larger boats. This project will get the City very close to the \$250,000 limit in ORS 297.435. Is this expense really needed?

Oregon SOS public records evidence Rivergrove's annual cash balance not being supported by prior year cash balance, receipts and expenditures and appearing to cover up over-expended appropriations in violation of ORS 294. This has been an unresolved and undisclosed issue and it is not clear why.

According to Oregon SOS public records, a group of Rivergrove Citizens recently petitioned the Secretary of States Office and requested an audit of Rivergrove financial records. The Oregon SOS Audits Division informed Rivergrove of the need for an audit and directed the city to comply with the provisions of ORS 297.425. Mayor Barhyte pushed back on the petition and Rivergrove balked at SOS's directive. Subsequently, the Secretary of State Audits Division ran out of patience with Rivergrove's attitude and has now taken over the responsibility of having a complete audit of Rivergrove financials per ORS 297.445. This is a very unattractive and very concerning situation

Given the above facts, a "NO" vote on Rivergrove's tax levy proposal is recommended.

Michael Salch

*(This information furnished by Michael Salch)*

*The above information has not been verified for accuracy by the county.*

## **CITY OF RIVERGROVE MEASURE 3-637**

### **ARGUMENT IN OPPOSITION:**

#### **Why I'm Opposed to Measure 3-637**

Currently, Rivergrove residents do not pay city property taxes—we already pay county taxes that fund many essential services. Measure 3-637 would change that by creating a new, ongoing city tax. That's a significant shift, and I don't think it should happen without strong justification.

For me, this comes down to whether the City has shown it can manage its current resources responsibly before asking for more. The financial pressure the City is facing appears largely self-created. Creating a new tax to address that growth shifts the burden onto residents.

Based on the City's In-Lieu of Audit Reports filed with the Oregon Secretary of State, spending has increased substantially in recent years. Personal services costs have also grown, including the City Manager position, now around \$55,000 annually for a part-time position. That raises reasonable questions about spending priorities.

There are also concerns about transparency and accountability.

More than 10% of Rivergrove voters petitioned for a financial audit, yet the process has been delayed despite involvement from the Secretary of State's office. It seems reasonable to complete that review before introducing a new tax.

The City has also received repeated notices from the state about spending beyond approved appropriations under Oregon's Local Budget Law (ORS 294). I have not seen clear communication that these issues have been resolved.

While the levy amount may seem modest, the precedent is not. Once established, these taxes tend to continue.

I'm not opposed to funding the City when it's truly needed. However, I do think it's reasonable to expect clear financial accountability, a completed audit, and demonstrated spending discipline before asking residents to take on a new tax.

For these reasons, I am not in support of Measure 3-637.

*(This information furnished by Joan Joyce)*

*The above information has not been verified for accuracy by the county.*

## **CITY OF RIVERGROVE MEASURE 3-637**

### **ARGUMENT IN OPPOSITION:**

#### **Why Rivergrove Residents Should Vote NO on Measure 3-637**

Rivergrove was founded over 50 years ago in 1971 by a vote of 57-48. The current population of Rivergrove is 534, down .37% since the most recent census of 2020. It has no police department, no fire department, two small parks and .1 square miles of land. It has operated without property taxes from its inception, with other income that has exceeded expenses. The lack of growth in the last few years does not support the need for doubling the budget of our small residential community, especially without explanation or debate.

Measure 3-637, offered by the Current City Council, seeks an unprecedented new tax of \$63,000 in fiscal year 2026-2027 that admittedly may cause property taxes to increase more than three percent. There has been no discussion why this is necessary. Many issues, including questionable budgeting for a contract attorney to attend every council meeting, require resident input at the very least and immediate failure of the current proposal.

**On the May ballot, vote NO on Measure 3-637.** Talk to your neighbors, share this statement, and make your voice heard.

*(This information furnished by Marianne Bottini)*

*The above information has not been verified for accuracy by the county.*

## CITY OF RIVERGROVE MEASURE 3-637

### ARGUMENT IN OPPOSITION:

#### Why Rivergrove Residents Should Vote NO on Measure 3-637

Rivergrove is currently one of the few places where residents pay **zero** city property taxes. Measure 3-637 asks you to end that legacy. Before you sign over your hard-earned money, consider whether the City has earned your investment.

#### A Spending Problem, Not a Revenue Problem

According to "In-Lieu of Audit" reports filed with the Oregon Secretary of State, city expenditures have **tripled** in recent years. This isn't due to inflation; it's due to choices. Personal services spending has doubled, including a City Manager salary that has surged to roughly **\$55,000 annually for a part-time role**. We shouldn't be taxed to subsidize unsustainable administrative growth.

#### A Pattern of Taxpayer Avoidance

Trust is built on transparency, yet the City has consistently avoided it:

- **Audit:** Over 10% of Rivergrove voters petitioned the state for a formal financial audit. Instead of welcoming the chance to clear the air, the City has repeatedly delayed compliance. The City should welcome scrutiny not avoid it.
- **State Law:** The state has warned Rivergrove annually about over-expending appropriations in violation of **Local Budget Law (ORS 294)**. The City is spending money without legal authorization and has failed to provide a formal record of corrective action.

#### The Danger of Precedent

The initial ask may seem modest, but history shows that once a new tax is established, it rarely disappears—it only grows. Voting "No" isn't about being against city services; it's about demanding **accountability first**.

Rivergrove deserves a government that demonstrates fiscal discipline before reaching into your pockets. Tell the City: **Complete the audit, follow the law, and respect our budget before asking for more of it.**

**Vote NO on Measure 3-637.**

*(This information furnished by Landon Gentry)*

*The above information has not been verified for accuracy by the county.*

## Remember to Sign Your Ballot Return Envelope.

The most important thing is to remember to sign in the signature box on the return envelope. Your ballot cannot be counted if you do not sign the return envelope. Every signature is checked against the registration signature on file. The signatures must match for the ballot to be counted.

If you forget to sign or your signature does not match the ballot will be challenged. You will be notified with a mailed letter so that you can take action to ensure that your vote can be counted. The deadline for a voter to take action on their challenged ballot is 5 p.m., 21 days after Election Day.

Voters who have a disability and are unable to sign their ballot return envelope can contact Clackamas County Elections to request a *Signature Stamp Attestation Form*. This form allows voters to use a signature stamp or other mark as a signature on their voter registration file.

No one can sign a return envelope on behalf of a voter, including a Power of Attorney or Guardian. Signing someone else's signature on a ballot is a felony punishable by up to five years' imprisonment and a fine of up to \$125,000 and civil offense punishable by penalties of up to \$10,000.

Voters can contact Clackamas County Elections at 503-655-8510 or [elections@clackamas.us](mailto:elections@clackamas.us) for a *Signature Stamp Attestation Form* or other assistance.

# Voter Assistance

We can help!

## Voters with Disabilities



Do you need assistance registering to vote or voting? Support services and tools are available to ensure voting access for all.

## Interpretation Assistance



Do you need assistance voting in a language other than English? Interpretation services are available.

Please contact us at **503-655-8510** or [elections@clackamas.us](mailto:elections@clackamas.us) for any voter assistance needs.

# Voting Instructions

## 1. Vote your Official Ballot

Locate the measure response (Yes or No) of your choice for each contest. To vote, completely darken the rectangle to the left of your choice with black or blue ink. [Figure 1]

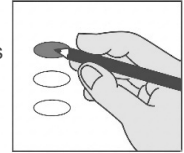


Fig. 1

Remember: If you vote for more than the number of candidates allowed for an office, or you vote both Yes and No on a measure, it is called an overvote and your vote for the candidate or measure will not count. [Figure 2]

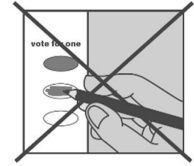
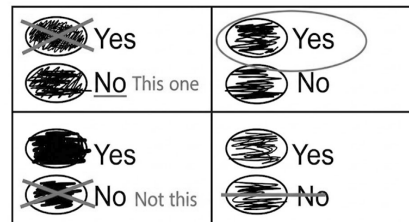


Fig. 2

You are not required to vote on everything. Your ballot will still be counted as cast and your votes for other contests will be counted.

### If you make a mistake

Don't tear up your ballot yet. You can correct the mistake. Make your choice obvious so that election officials can count it correctly. Please review the examples of acceptable corrections.



## 2. Review your Official Ballot

Ensure you have correctly marked your choice for each contest. Your official ballot may contain contests printed on both front and back. Remember to review both sides!

If you lose your ballot, or it is spoiled in any way, contact Clackamas County Elections at **503-655-8510** to request a replacement ballot.

## 3. Sign and Return your Official Ballot

Place your voted official ballot in the envelope and sign the Voter's Statement.

**Remember:** Read and sign the Voter's Statement on the Return Ballot Envelope. Your ballot cannot be counted if the Return Ballot Envelope is not signed.

**By Mail:** **Stamps are not required** to mail your Return Ballot Envelope. Please mail it as soon as possible; it **must be postmarked by Tuesday, May 19, 2026**. Ballots postmarked by the deadline must also be received by Clackamas County Elections no later than 5 p.m., May 26. We recommend mailing your ballot back a week before Election Day.

**In Person:** Deliver the signed and sealed Return Ballot Envelope to any official ballot drop site no later than **8 p.m. on Tuesday, May 19, 2026**.

# Trusted Information



Find accurate and trusted information from Clackamas County Elections.

Visit [clackamas.us/elections](https://clackamas.us/elections) for:

- voter information,
- Track Your Ballot,
- Official Ballot Drop Sites,
- voter assistance,
- election results and returns,
- and other election data.

---

## Extended Office Hours

Clackamas County Elections will have extended hours for your convenience.

### Voter Registration and Party Choice Deadline

April 28, 2026  
8:30 a.m. - 7 p.m.

### Saturday Hours

May 16, 2026  
10 a.m. - 2 p.m.

### Election Day

May 19, 2026  
7 a.m. - 8 p.m.

## Clackamas County Elections

503-655-8510 |  
[elections@clackamas.us](mailto:elections@clackamas.us)  
[clackamas.us/elections](https://clackamas.us/elections)

## CITY OF WILSONVILLE MEASURE 3-632

*REFERRED TO THE PEOPLE BY INITIATIVE PETITION*

**Caption:** Amends Charter to require voter approval for Urban Renewal Plans

**Question:** Should the Wilsonville Charter be amended to require voter notification and approval to create or substantially change Urban Renewal Plans?

**Summary:** This measure amends the Wilsonville Charter to require voter approval for the creation of, or substantial changes to, Urban Renewal Plans ( "Plans" ). The City would be required to provide public notice when an election will authorize new urban renewal indebtedness, including borrowing amount, duration of debt, total estimated amount of repayment, effects on taxing districts, and feasibility study assumptions relating to additional housing units and commercial and industrial square footage, when applicable.

If the Urban Renewal Agency ( "Agency" ) remains active after the retirement of all urban renewal indebtedness in existing Plans and no new Plans are approved during the four-year period following the indebtedness retirement, the City must undertake an advisory vote by the local electorate whether the Agency should remain active. If the majority of voters support retaining the Agency, the City Council may consider proposed Plans for an additional four-year period.

**NO EXPLANATORY STATEMENT WAS FILED**

The full text of this measure is available online at [www.clackamas.us/elections](https://www.clackamas.us/elections)

**CITY OF WILSONVILLE  
MEASURE 3-632**

**ARGUMENT IN FAVOR:**

**Voting “YES” on Urban Renewal is Sound Policy**

I supported Clackamas County’s Right to Vote on Urban Renewal in 2011 because the measure empowered voters to weigh project trade-offs before they proceed. As Sheriff, I saw firsthand how these projects can strain long-term budgets for essential services like police, fire and education.

Today, I still believe voters should have the opportunity to vote on whether or not to approve urban renewal plans.

Wilsonville voters now have the chance to secure this same right. I encourage you to vote YES on Measure 3-632.

Craig Roberts, Wilsonville

Paid for by Keep Wilsonville Voting ID#24784

*(This information furnished by Craig Roberts)*

*The above information has not been verified for accuracy by the county.*

**CITY OF WILSONVILLE  
MEASURE 3-632**

**ARGUMENT IN FAVOR:**

**We Chose Wilsonville. We Trust Its Voters. Vote YES on 3-632.**

We moved to Wilsonville fifteen years ago to raise our family and never looked back. We coached youth sports, volunteered in schools, and watched our children grow up alongside kids who became their closest friends — friendships that have lasted into adulthood. The families we met on those sidelines and in those classrooms became our people. That’s not something you find everywhere. It’s something Wilsonville built, and something worth protecting.

That difference wasn’t an accident. It came from neighbors who cared deeply about what kind of place this would be — and who stayed engaged to make sure it stayed that way.

Over the years, our work has given us a front-row seat to what people love about Wilsonville and what they worry about. We have worked with hundreds of families looking for homes here, and consistently hear the same things: people choose Wilsonville because of its character, its scale, its sense of community. They are not passive residents. They have opinions about how this city grows, and they want those opinions to matter.

Measure 3-632 is about exactly that. Urban renewal plans commit public resources for decades — decisions that shape neighborhoods, redirect tax dollars, and determine what kind of city Wilsonville becomes. These are not technical matters to be handled quietly by agencies and consultants. They are community decisions. They deserve a community vote.

What we love most about Wilsonville is that it has always been a place where residents feel like stakeholders, not bystanders. Measure 3-632 protects that. It doesn’t stop growth or block development. It ensures that when major long-term commitments are made in the name of this community, every voting resident has an equal and important voice in that decision.

That’s the Wilsonville we chose. That’s the Wilsonville we want our children to come back to.

Vote YES on Measure 3-632.

Ashley and Ryan McConnaughey  
Your Wilsonville neighbors — fifteen years

*(This information furnished by Ryan McConnaughey)*

*The above information has not been verified for accuracy by the county.*

**CITY OF WILSONVILLE  
MEASURE 3-632**

**ARGUMENT IN FAVOR:**

**Please Vote “Yes” on Measure 3-632**

Wilsonville residents and business owners want a direct, binding vote on urban renewal decisions that commit hundreds of millions in public debt. These are exactly the kinds of major, long-term commitments that should require real voter approval — not just outreach processes where the City controls the agenda and avoids the questions that matter most.

- |  |  |
|--|--|
| Robert Adatto                                  | Jeremy Hill                            |
| Donna M. Atkinson                              | Emily and Ian Isaacs                   |
| Rhonda and Steve Bakke                         | Donald A. Isaacson                     |
| Michael and Michelle L. Barrett                | Laurie Goldfuss-Isaacson               |
| John and Kelly Bartlett                        | Toni Jack                              |
| Katrina and Mike Berry                         | Colin and Kathryn L. James             |
| Robert M. Bittle                               | Paula M. Johnson                       |
| Rod and Valerie Boucher                        | (Hairdresser, self-employed)           |
| Michelle R. Brock                              | Gwendolyn Lloyd-Johnson                |
| John and Katherine Budiao                      | Julie and Tim Johnson                  |
| Stephanie Carkin (Hydro-Temp Mechanical, Inc.) | Julie A. Kasler                        |
| Carol Caudle                                   | Jerry A. Kelso                         |
| Elizabeth and Charles A. Corey                 | John and Vickie Kibler                 |
| Kristi Corno                                   | Dawn Kirkham                           |
| Robert Crawford                                | Robert Kochheim                        |
| Dana Crocker                                   | Cheryl Kruse                           |
| Adam Cunningham                                | Christine La Charite                   |
| Christopher Daniel                             | Arnold B. Larsen                       |
| Denise and Randall W. Daniels                  | John E. Lovell                         |
| Scott Deveau                                   | Paul and Kathryn H. Majuri             |
| Carrie and John R. Durig                       | Cort and Kim Maleiki                   |
| Richard and Marlene G. Enos                    | Gabriel Maoz                           |
| Steve Fitton                                   | Jade Priest-Maoz                       |
| Andrew and Julie L. Foltz                      | Mike Maoz                              |
| Becky L. Fromhart                              | Next Level Chiropractic of Wilsonville |
| Christine Fruin                                | Linda D. McMaster                      |
| Greg and Kim Gahan                             | Ashley and Ryan McConnaughey           |
| Cheryl Gore                                    | Kristin McVay                          |
| Adam and Carey Guenther                        | Matthew Frederick Miller               |
| Alison Guile                                   | Sarah Harold Miller                    |
| C.G. Appraisal Services, Inc.                  | Jules Moody                            |
| Carol Guile (Owner & President)                | Carolyn Moore                          |
| Gregory M. Guile                               | Gregory and Tawnhee Northcutt          |
| Donna and Jeremy Hammock                       | [Continued on next page]               |
| Victoria Hamilton                              |  |
| Jennie Hill                                    |  |

*(This information furnished by Eric Winters)*

**CITY OF WILSONVILLE  
MEASURE 3-632**

**ARGUMENT IN FAVOR:**

**Please Vote “Yes” on Measure 3-632**

[Continued from last page]

- Neil Ochs
- Megan and Steve Peck
- Cade Peterson
- Daniel S. Petty
- Kevin M. Reid
- John Richards
- Oregon Acupuncture Center
- Chris Roche
- John “Jack” Roche
- Darrell and Julie A. Rustrum
- Robin Shaffer
- Michelle Seal
- Dwight Sims
- Bryan Smith
- Lisa M. Smith
- Scott and Tina Starr
- James Stubblefield
- Stephanie Tharp
- Dennis Thayer
- Christina Marie Thompson
- Lisa and Tim Tofte
- Cheryl and Tom Vaughn
- Gerald Veenker
- Andrew Walls
- Kevin and Ruth Webster
- Doris Wehler
- Elisha and Gus C. Wettstein
- Michael and Christine Y. Weber
- Carol Elaine Wilson
- Eric Winters

The names above are your neighbors — homeowners, business owners, and community members who helped build Wilsonville and intend to stay. They don’t oppose growth. They oppose being bypassed. Measure 3-632 doesn’t stop the Town Center. **It simply requires that decisions of this magnitude be made with Wilsonville — not to it.** Major public financing commitments deserve a real vote, not a managed process designed to reach a predetermined conclusion. Trust your neighbors. Trust yourself.

**Vote YES on Measure 3-632.**

*(This information furnished by Eric Winters)*

## CITY OF WILSONVILLE MEASURE 3-632

### ARGUMENT IN FAVOR:

#### Vote Yes...on Voting!

Do you like voting? Do you want to have a direct say on Wilsonville's future? Do you believe that the best way to gauge public support for a project is voting? If you answered "yes" to any of these questions, then this measure is for you! If you said "no," then democracy might not be a good fit...

Did you know that Wilsonville's City Council can create an Urban Renewal district — one of the city's most powerful financial tools — without a vote? And even when a vote is taken, the results aren't legally binding? This needs to change.

Voters should have the ultimate say on when and how we use Urban Renewal. That is why I helped sponsor this measure. A "yes" vote guarantees your right to decide how our city will responsibly grow and develop.

#### Nothing is more pro-voter than voting.

Urban Renewal can shape how our city grows and spends public money for decades. Historically, Wilsonville has used it responsibly, but never without holding an "advisory" vote. But "advisory" is just that - it's optional. It's not required. This measure makes your vote required and binding. No future Urban Renewal Plan would move forward without voter approval.

You should also know the details about what you are voting on. This measure requires the City to provide clear, accurate information before any election, including the amount of proposed debt and the size of any new development. You deserve to know these details before you vote.

Some may worry this could slow down important projects. It won't. This measure doesn't block Urban Renewal — it guarantees voters are informed and projects with genuine community support will pass. That's how it should work.

If you want to guarantee your right to vote on the most important decisions facing Wilsonville, please vote yes.

Rob Candrian (member of the Planning Commission and former non-partisan candidate for Mayor)

*(This information furnished by Rob Candrian)*

## CITY OF WILSONVILLE MEASURE 3-632

### ARGUMENT IN FAVOR:

#### The Oregon Small Business Association PAC urges a YES vote on Measure 3-632.

Wilsonville's small businesses — the locally-owned restaurants, shops, and service providers that give this city its character — are largely absent from the coalition pushing the Town Center plan. That's because most of them have nothing to gain from it. The businesses lobbying city hall for urban renewal financing are not the ones that define Wilsonville's small-town feel. They are the ones who stand to profit from replacing it.

#### We trust Wilsonville voters more than we trust that lobby

That is why we support Measure 3-632.

Proponents promise vibrant local shops and gathering places. We would welcome that too. But urban renewal financing doesn't guarantee it. Large-scale commercial redevelopment financed through tax increment debt tends to attract tenants who can sign long-term leases and absorb high rents in new construction: national chains and corporate retailers. The independent restaurant, the local boutique, the neighborhood service business — these rarely fill the ground floor of a TIF-financed development. Wilsonville residents already know what it feels like to have more fast-food options than locally-owned dining. Urban renewal debt is unlikely to change that.

The developers who benefit from it will tell you otherwise — but they have no mechanism to deliver on that promise and no obligation to try. They made the same promises to attract local businesses to Villebois, but **urban renewal was powerless to deliver on them.**

We ask you to consider the quieter majority — the local owners who serve this community every day and who understand that the small-town character of Wilsonville is not an obstacle to overcome. It is the point.

Voters can be trusted to make informed decisions about the future of their community. Measure 3-632 gives them that opportunity.

Vote YES on Measure 3-632.

Oregon Small Business Association PAC

*(This information furnished by TJ Reilly,  
Oregon Small Business Association)*

*The above information has not been verified for accuracy by the county.*

*The above information has not been verified for accuracy by the county.*

**CITY OF WILSONVILLE  
MEASURE 3-632**

**ARGUMENT IN FAVOR:**

**VOTE YES TO KEEP WILSONVILLE VOTING ON URBAN RENEWAL**

Urban Renewal is a powerful tool that can be used to not only cure blight, but to reshape our City in the process. Because of its power and potential impact, the City has a long history of holding advisory votes for Urban Renewal to ensure that the City and the community are aligned on the future of the town before Urban Renewal is utilized. The practice of holding advisory votes has recently been called into question, which prompted this measure being brought to the voters.

**IF YOU WANT TO CONTINUE VOTING ON URBAN RENEWAL, THIS MEASURE IS YOUR OPPORTUNITY**

Measure 3-632 ensures that we have the right to vote on Urban Renewal, makes certain that the resulting vote is binding, and helps prevent circumvention of our right to vote. Voting on Urban Renewal has served our community well for decades and this measure secures our right to vote going forward.

I support Measure 3-632 and encourage all residents who want their voices heard in the Urban Renewal process to do the same.

Jeff Richmond, Co-Chief Petitioner of Measure 3-632

*(This information furnished by Jeffrey Richmond)*

*The above information has not been verified for accuracy by the county.*

**CITY OF WILSONVILLE  
MEASURE 3-632**

**ARGUMENT IN FAVOR:**

**LET WILSONVILLE VOTERS DECIDE**

Measure 3-632 amends the Wilsonville City Charter to require voter approval before the City adopts a major urban renewal plan. This measure is intended to protect residents from financial decisions that affect taxes, services, and quality of life.

Urban renewal is a financing tool that redirects future property tax revenue from a designated area to pay for development projects. These plans often last twenty to thirty years or longer. During that time, property taxes generated within the urban renewal area are committed to development costs rather than schools, fire protection, libraries, parks and other services residents rely on.

**Urban renewal does not create new money. It reallocates public revenue.** When future tax dollars are locked into an urban renewal plan, the city has less funding available for roads, police and fire services, and public facilities. As costs rise and the community grows, residents may experience higher fees, future tax increases, or reduced services.

Wilsonville's recent experience shows why voter oversight matters. In May 2024, voters rejected an advisory vote on the Town Center Plan. After that vote, residents learned that a feasibility study suggested up to 4,100 housing units might be required to support the plan through urban renewal. Many voters were unaware of this scale before voting.

Advisory votes allow public input, but they are not legally binding. Without Measure 3-632, urban renewal plans may be adopted even if voters raise concerns. Measure 3-632 ensures residents have a meaningful voice before future tax revenue is committed for decades.

Measure 3-632 does not prohibit development or urban renewal. **It allows voters to give final approval before these long-term financial commitments are made.**

Measure 3-632 promotes transparency, strengthens accountability, and protects taxpayers.

**VOTE YES ON MEASURE 3-632**

Paid for by Jennie Hill, Wilsonville Resident & Business Owner

*(This information furnished by Jennie Hill)*

*The above information has not been verified for accuracy by the county.*

## CITY OF WILSONVILLE MEASURE 3-632

### ARGUMENT IN FAVOR:

#### ENSURING VOTERS HAVE A VOICE

As a retired energy executive and a retired educator, we support **Measure 3-632** because major urban renewal decisions fundamentally shape the future of our community.

Wilsonville has always been a place where residents care deeply about how our city grows and how public resources are utilized. Measure 3-632 provides a balanced approach: it allows the City Council to develop urban renewal plans while giving residents the opportunity to review the details and vote before major, long-term commitments are finalized.

Urban renewal plans often involve significant public debt and decades of property tax commitments. These decisions affect every taxpayer, our local housing market, and essential city services. We believe residents deserve clear, complete information before being asked to support such impactful changes.

Here are key facts Wilsonville residents should understand:

- **High density:** Wilsonville has one of the highest numbers per capita of multi-unit housing in Oregon.
- **Housing mix:** About 60% of housing in Wilsonville is rental housing.
- **Single family homes:** At 37% our city has the lowest percentage of single family homes in the region.
- **Scale of Development:** A feasibility study for the Town Center Plan suggested that as many as 4,179 housing units could be required to support development using urban renewal funds
- **Transparency:** Critical details—such as building heights and the total scale of development—should be fully disclosed from the outset.

Measure 3-632 does not stop development or eliminate urban renewal. It simply ensures that when decisions carry long-term financial consequences, the people who live here have a seat at the table.

Please join us in voting **YES ON MEASURE 3-632**.

Submitted by Rod and Valorie Boucher

*(This information furnished by Valerie Boucher)*

*The above information has not been verified for accuracy by the county.*

## CITY OF WILSONVILLE MEASURE 3-632

### ARGUMENT IN FAVOR:

#### PUTTING DECISIONS BACK IN THE HANDS OF WILSONVILLE VOTERS

Measure 3-632 ensures the people of Wilsonville have the final say on **20-, 30- or 40-year urban renewal plans** that can permanently change the fabric of our city. It proposes an important amendment to the City Charter requiring **voter approval** before these plans are adopted.

Urban renewal funding is a legitimate tool used by local governments. However, decisions that can affect our city for decades should not rest solely with elected leaders serving four-year terms. Leaders should govern in collaboration with the public.

Requiring **voter approval** ensures these long-term urban renewal commitments are made with informed public consent. Measure 3-632 moves voter input from advisory to binding, ensuring public participation carries meaningful and enforceable weight. **This amendment promotes transparency, strengthens accountability, and aligns decision-making authority with those who bear the long-term fiscal impact.**

I'm a fourth-generation Oregonian born and raised in Southwest Portland. I moved to Wilsonville in 2020 and was elected as a local community leader in 2021. I believe strongly in **decentralizing power and limiting government overreach at every level**—federal, state, metro, county, or local.

In *Free to Choose* (1980), Nobel Prize-winning economist Milton Friedman cautioned:

“Keep your eye on how much the government is spending, because that is the true tax. There is no such thing as an unbalanced budget. You pay for it either in the form of taxes, inflation or debt.”

**PLEASE JOIN ME IN VOTING YES ON MEASURE 3-632**

Paid by Kristi Corno

*(This information furnished by Kristi Corno)*

*The above information has not been verified for accuracy by the county.*

## CITY OF WILSONVILLE MEASURE 3-632

### ARGUMENT IN FAVOR:

#### Secure Your Right to Vote on Urban Renewal Debt Vote “Yes” On Measure 3-632

As longtime Wilsonville residents, we want to share why we’re voting “yes” on Measure 3-632.

There is a growing division in our community, especially around big development decisions. When direction is taken without a public vote, citizens can feel disenfranchised and shut out of the process.

Measure 3-632 corrects this. **A public vote is the ultimate community engagement tool.** It ensures that major urban renewal debt decisions are put to voters with clear information and disclosures.

This measure gives community members the right to engage in an objective, open and democratic process that leads to closure rather than resentment.

**There is a good reason Clackamas County voters approved a similar measure 15 years ago.** It prevented the ability of a few elected officials—and powerful special interests—to run roughshod over the will of the people. Securing the people’s right to vote on urban renewal opens doors to worthwhile community development and protects needed funds from expensive “pet projects” that serve only a few.

**Measure 3-632 is good for Wilsonville.** It ensures taxpayers have a voice in the direction of our city. It also assures city council that they have community support for changes that impact families for generations.

**Please join us in voting “yes” on Measure 3-632.  
It’s what we need to bring our community back together.**

Rick and Elizabeth Peters  
Stan and Julia Satter  
Janna Sondenaar  
Dawn Mendenhall  
Matt and Connie Powell  
Jeff and Michele Collingham  
Dave and Teresa Sealey

Jeff and Kathy Hight  
Ned and Glenda Walls  
Eric and Carrie Postma  
Dave and Barb Wilson  
Rob and Michele Dempsey  
Paul Fruin

Paid for by Friends of Elizabeth Peters

*(This information furnished by Elizabeth Peters,  
Friends of Elizabeth Peters)*

*The above information has not been verified for accuracy by the county.*

## CITY OF WILSONVILLE MEASURE 3-632

### ARGUMENT IN FAVOR:

#### HOW URBAN RENEWAL USES PROPERTY TAXES

I support Measure 3-632 because voters should understand how urban renewal financing works before large long-term financial commitments are approved.

As a CPA and Wilsonville resident, I believe it is important that voters understand how these decisions affect property tax revenue.

**Urban renewal does not create new money.** Instead, it redirects future property tax revenue to repay debt used for development projects.

Those funds are often used to help finance infrastructure or improvements intended to encourage private development.

Imagine farmland that becomes a large residential development. Before development, the land may have a relatively low property value. After homes are built, the total value of the property increases significantly.

Property taxes on the original value of the land continue to support schools, libraries, fire protection, and other services.

**However, much of the property tax revenue generated from the increase in value is redirected for decades to repay urban renewal debt.**

Meanwhile, the new homes and residents still require services such as police, fire protection, roads, parks, and schools. Those services must still be funded through the same property tax system.

**Urban renewal can be a useful tool for development.** But when plans involve decades of property tax commitments, voters should understand how those financial decisions work before they are approved.

Measure 3-632 ensures residents have the opportunity to review those plans and vote.

**VOTE YES ON MEASURE 3-632**

Paid by Glenda Walls, CPA

*(This information furnished by Glenda Walls)*

*The above information has not been verified for accuracy by the county.*

## CITY OF WILSONVILLE MEASURE 3-632

### ARGUMENT IN FAVOR:

#### THE MAYOR WHO BROUGHT URBAN RENEWAL TO WILSONVILLE

##### Urges You to Vote YES on Measure 3-632

In 1990, as Mayor, I signed the ordinance creating Wilsonville's first urban renewal district. Our original plan included an access road, parks and Town Center infrastructure. We called for an advisory vote after residents raised concerns about school funding diverted by the plan. When they turned it down, I was disappointed, but I respected their decision

A few years later, the City Council broadened the plan to help build infrastructure for our high school. It gained public support and contributed to the city we love.

##### But over time, the "vision" for urban renewal has changed.

The tool has shifted from building essential infrastructure into a way for the City to subsidize speculative projects. To date, the City has authorized **over \$150 million in urban renewal debt**. With 30 years of interest, **taxpayers will pay closer to a quarter billion dollars**.

The City says, "**Trust us,**" but remember **SoloPower**. In 2011, the Council tried to bypass the voters and commit nearly \$11 million in urban renewal incentives to a speculative solar company. Wilsonville residents rose in opposition, gathering signatures to force a public vote.

Faced with making their case to voters, SoloPower fled Wilsonville. They accepted even larger subsidies from Portland before going bankrupt without ever bringing a product to market. **No amount of our tax money would have saved them—the people's right to vote saved Wilsonville millions.**

Now, the City is proposing a "**vertical neighborhood**" with a **population rivaling Villebois**. While Villebois spread 2,700 households over 480 acres, Town Center could cram 4,179 units into just 100 acres. We deserve a binding vote before the City commits hundreds of millions to a project of this magnitude.

I trust citizens over City Hall. Voting **YES** confirms our authority to decide our own future.

##### VOTE YES ON MEASURE 3-632

Submitted and paid for by John Ludlow, former Wilsonville Mayor.

*(This information furnished by John Ludlow)*

## CITY OF WILSONVILLE MEASURE 3-632

### ARGUMENT IN FAVOR:

The Oregon Taxpayer Association Urges a Yes Vote on Measure 3-632

**Urban renewal is not free money.** It is debt — and Wilsonville taxpayers are the ones who carry it.

When an urban renewal district is created, property tax growth within that district is frozen and redirected to repay urban renewal debt. That frozen revenue no longer flows to your fire district, your library, your parks, or your city's general fund. Those are direct, local losses — with no redistribution system to soften the impact. The taxing districts that absorb those losses face a straightforward choice: cut service levels or ask voters for additional levies to cover the gap. **Either way, you pay twice** — once for services you expected, and again for urban renewal commitments you never approved.

It is worth being clear about where that diverted money goes. Urban renewal debt finances public infrastructure and subsidies that make private development projects viable. There are circumstances where that tradeoff serves the public interest. But when service funding is redirected to subsidize private development, the people whose services are reduced — and whose taxes may later be increased to compensate — are entitled to a vote on whether the exchange is worth it. That is not a radical proposition. It is the minimum condition for informed consent.

Voters are capable of weighing real costs against real benefits if given honest information about both. What they deserve is a clearly defined project, transparent debt parameters, and a genuine vote. What they have been getting is reassurance that urban renewal costs them nothing. **It doesn't cost nothing. Measure 3-632 ends that fiction.**

Measure 3-632 doesn't stop urban renewal. It requires that major plans come to voters with enough definition and honesty to make an informed decision possible. That is the standard of accountability taxpayers deserve.

The Taxpayer Association of Oregon urges a **YES** vote on Measure 3-632.

Taxpayer Association of Oregon  
More info at [OregonWatchdog.com](http://OregonWatchdog.com) (since 1999)

*(This information furnished by Jason Williams,  
Taxpayers Association of Oregon)*

*The above information has not been verified for accuracy by the county.*

*The above information has not been verified for accuracy by the county.*

## CITY OF WILSONVILLE MEASURE 3-632

### ARGUMENT IN FAVOR:

#### A CITY COUNCILOR'S SUPPORT FOR MEASURE 3-632

As an elected leader in this community, I will be voting YES on Measure 3-632.

Wilsonville has a long tradition of holding an advisory vote when using Urban Renewal. This measure will ensure that your elected officials seek and honor your vote on momentous decisions that could transform the character of your community.

**This measure puts you, the voter, first.** Given the heavy-handed mandates from Salem and Metro to increase density, override our local control, and trade your quality of life for their goals, this measure takes decisions away from politicians and gives you back control of your town. As local control is threatened, Measure 3-632 puts it back into the hands of taxpayers and residents.

**This measure will ensure that voters are fully informed about the plan and its impact.** This includes disclosures about debt, interest, commercial and industrial development, and housing and density numbers.

No surprises. Full disclosure. Informed consent. You deserve nothing less.

**Strong plans are built upon community trust.** Plans that earnestly seek the community's input and draw conclusions aligned with our residents' actual desires will continue to be approved. I will support those plans.

This measure will enhance transparency and increase trust in our local government, ensuring that each citizen feels their input is valued and not discarded.

**Measure 3-632 will guarantee your voice is heard.**

Adam Cunningham  
Wilsonville City Councilor

*(This information furnished by Adam Cunningham)*

*The above information has not been verified for accuracy by the county.*

## CITY OF WILSONVILLE MEASURE 3-632

### ARGUMENT IN FAVOR:

#### WHY YOUR APPROVAL MATTERS

Requiring voter approval for major urban renewal projects is a nonpartisan issue enjoying broad, cross-community support.

Wilsonville has successfully used urban renewal for 35 years. Today we need to look at urban renewal plans differently. The reality is online shopping dominates while traditional brick-and-mortar stores continue to decline. Future proposals must align with actual market conditions, not just utopian dreams or optimistic forecasts.

#### VOTING YES:

- Does not kill urban renewal
- Does not block development or redevelopment
- Does not strip power from the City Council
- Does demand real transparency — a critical need today
- Does ensure all key details of any plan be fully disclosed
- Does empower residents to make informed choices
- Does foster trust between the community and city government

#### EFFECTS OF VOTING YES ON THIS MEASURE:

- Requires voter approval before creating a new urban renewal district
- Requires voter approval if there are major changes to an existing district

Wilsonville has a long tradition of allowing voters to weigh in on major urban renewal plans. This measure preserves and enhances that tradition with a binding vote to ensure voters have a voice when large financial commitments are proposed.

**Voting YES** for this measure will ensure that all details of an urban renewal plan are clearly laid out for voters. It means **true transparency**, allowing voters to make decisions based on complete and true information.

**You and every Wilsonville voter deserve nothing less.**

Paid for by Doris Wehler

*(This information furnished by Doris Wehler)*

*The above information has not been verified for accuracy by the county.*

## CITY OF WILSONVILLE MEASURE 3-632

### ARGUMENT IN FAVOR:

#### A BUSINESS PERSPECTIVE ON MEASURE 3-632

As a local business owner in Wilsonville, I support Measure 3-632 because it reflects the kind of thoughtful partnership that has always made our city strong. Wilsonville works best when local government, residents, and businesses collaborate toward shared goals and clearly communicated growth.

Our community has been successful because we plan ahead, listen to one another, and invest responsibly in the services and infrastructure that support daily life. Well-maintained public spaces, reliable systems, and careful long-term planning help businesses operate with confidence, attract customers, and provide jobs for local families. Transparent decision making helps citizens understand how Wilsonville is growing and why those decisions matter.

Because major urban renewal plans can involve long-term public debt and significant development decisions, residents should have the opportunity to **review those plans and vote before the city makes long-term financial commitments on their behalf.**

**Measure 3-632 continues that balanced approach** by aligning community priorities with sustainable growth, ensuring that Wilsonville remains a place where businesses can thrive and residents can feel proud of the city they call home.

I encourage a **yes vote** to support collaboration, clarity, and a strong future for Wilsonville.

#### VOTE YES ON MEASURE 3-632

Paid for by Stephanie Carkin

*(This information furnished by Stephanie Carkin,  
Hydro-Temp Mechanical)*

## CITY OF WILSONVILLE MEASURE 3-632

### ARGUMENT IN FAVOR:

#### YES TO WILSONVILLE RESIDENTS DECIDING HOW WILSONVILLE GROWS!

**We support a YES vote because WE LOVE  
WILSONVILLE!**

We believe everyone that lives here deserves a collective voice in how we grow. Being a part of Wilsonville, there is a strong sense of connection, community and neighborhood pride. Many have discovered how wonderful our town is. The convenience of Interstate 5, our top-notch parks, proximity to the Willamette River, best schools, a real sense of community and safety are just a few pieces contributing to our hamlet nestled here at the gateway to the Willamette Valley.

**Who better to decide our direction than the very  
heartbeat of our community — YOU, THE VOTER!**

**A YES vote assures ALL VOICES in Wilsonville are  
represented and heard on critical plans shaping OUR  
future.**

#### A YES VOTE... IS NOT ANTI-GROWTH. IT IS PRO- COMMUNITY

- Allows residents to control our own destiny by voting YES or NO to urban renewal plans impacting the character of our town.
- Ensures our growth is thoughtful by putting resident's needs first, not outsiders' wants (out-of-state developers, paid Portland consultants, lobbyists, METRO).
- Protects growth that is consistent with our shared community goals and visions.

#### A YES VOTE... IS NOT ANTI-URBAN RENEWAL, IT IS PRO-TRANSPARENCY

- Residents are guaranteed a seat at the table to decide critical details of how OUR urban renewal tax dollars are spent.

Do we want to subsidize infrastructure for 2 story, 4 story or 10 story multi-units for Town Center? How much density do we want? 1600 apartment units? 4200 units? What is the maximum debt level? \$100 Million? \$250? There are critical details that the public deserves to know.

- A public vote mandates government transparency and accountability on urban renewal plans. No hiding fundamental details previously undisclosed from the public.

#### VOTE YES TO GUARANTEE WE WILL ALWAYS HAVE A VOICE IN OUR FUTURE!

Dina Ochs, Lifelong Wilsonville **Resident**  
Kristin Roche, 30+ Year 97070 **Resident**

*(This information furnished by Kristin Roche & Dina Ochs)*

*The above information has not been verified for accuracy by the county.*

*The above information has not been verified for accuracy by the county.*

## CITY OF WILSONVILLE MEASURE 3-632

### ARGUMENT IN FAVOR:

#### Outside Interests (Like PMAR) Are Wrong to Oppose Local Control

I support affordable housing for Wilsonville seniors and families. I also support Measure 3-632. These are not in conflict.

When you read arguments against this measure, you'll hear genuine concerns about housing costs. Those concerns deserve honest answers — not a plan engineered by outside interests and presented to Wilsonville as the only solution.

The push behind the Town Center comes from a familiar coalition: regional planners remaking Oregon's outer suburbs into denser, transit-oriented communities, developers who need the work, and trade associations like the Portland Metropolitan Association of Realtors that serve them.

PMAR took this position first — then asked a select group of Wilsonville Realtors to sign on. Most declined. I know how this organization works — I served as its Vice President, chaired its Professional Standards Committee, and was honored as its Realtor of the Year. **That's not how a member-accountable organization behaves.** It's what happens when an association no longer needs to listen to its members — because most Portland-area Realtors must belong to a local association like PMAR to access the regional MLS, whether they agree with its politics or not. That captive membership means no market accountability, no mechanism for local members to push back — **unless voters build one themselves.**

The organization I served put community trust first. What it is doing today — lending its name to outside interests telling Wilsonville citizens they should not vote on decades of public financing commitments — is something different.

Measure 3-632 doesn't block the Town Center. It doesn't stop housing. It simply requires voter approval before future property tax growth is redirected for a generation.

If this plan is as good for Wilsonville as its backers claim, voters will say yes. Measure 3-632 is how we find out.

#### Vote YES on 3-632.

John Ludlow  
Former Wilsonville Mayor  
Former Vice President, Portland Metropolitan Association of Realtors  
PMAR Realtor of the Year

*(This information furnished by John Ludlow)*

## CITY OF WILSONVILLE MEASURE 3-632

### ARGUMENT IN FAVOR:

#### What Our Opponents Are Claiming — And Why They Are Wrong

Opposition mainly comes from development interests seeking to profit from public subsidies, organizations prioritizing housing density over resident input, and supporters of specific plans that fear a public vote. They make a lot of claims, here are some:

**FALSE CLAIM: Proponents want to stop urban renewal.** Urban renewal works best when voters are invested in its success. As a public debt mechanism, it reallocates tax revenues for decades to reshape Wilsonville. Wise use currently relies on the judgment of three City Councilors (serving four-year terms). Residents are the ultimate stakeholders and deserve the final binding vote.

**FALSE CLAIM: This measure would have prevented the great things urban renewal created.** Wilsonville's successful districts had overwhelming voter support — Villebois passed at 79%! Two plans failed: the very first in 1990 and recently in 2024. This measure was spurred by voters' desire to keep voting with meaningful financial disclosures.

**FALSE CLAIM: This is a right-wing effort to undermine affordable housing.** Our petition drew signers across all political backgrounds; the largest cohort were unaffiliated with either major party. Chief petitioners include two unaffiliated voters and one Democrat. They believe major projects requiring new public debt deserve public approval.

**FALSE CLAIM: A small group can hold up development through petitioning.** This measure requires a public vote on major urban renewal decisions without petitioning. It preserves an emergency petition option if a major change was disguised as a minor one. No amendment in Wilsonville's history of urban renewal use would have triggered it.

**FALSE CLAIM: Town Center is blighted and proponents don't care.** Everyone cares about the state of Town Center, but the City finalized the plan in 2019 with pre-Covid assumptions. It sat for five years before voters rejected it. This measure guarantees that when voters see it again in November, they will also have the financial disclosures needed to make fully informed decisions.

#### Vote YES on Measure 3-632

*(This information furnished by Eric Winters)*

*The above information has not been verified for accuracy by the county.*

*The above information has not been verified for accuracy by the county.*

## CITY OF WILSONVILLE MEASURE 3-632

### ARGUMENT IN OPPOSITION:

#### PROTECT WILSONVILLE'S FUTURE. VOTE NO ON MEASURE 3-632.

We love Wilsonville.

We are parents and grandparents, small business owners and civic leaders, and neighbors who care about this community. We want safe neighborhoods, good schools, thriving local businesses, new restaurants, and a Town Center that truly feels like the heart of Wilsonville.

#### Measure 3-632 takes us in the wrong direction.

It's a nearly 900-word amendment to our city charter – Wilsonville's constitution – packed with fine print and new procedural hoops. It's being sold as a simple way to "let people vote." But that's not what it really does.

Measure 3-632 is wrong for Wilsonville because it:

- **Wastes taxpayer money and risks higher taxes.** It would force automatic re-votes and repeat elections, driving up election costs, staff time, and legal bills.
- **Creates red tape and delays.** It would drag out important community projects for years, making everything more expensive and harder to get done.
- **Puts our future at risk.** It would make it much harder for Wilsonville to use urban renewal – a proven, no-new-taxes tool – to fix Town Center, improve streets and sidewalks, and make needed investments in our community.

Wilsonville needs practical solutions, not costly experiments with unintended consequences.

Please join community leaders and your neighbors in voting NO on Measure 3-632.

Senator Courtney Neron Misslin  
Mayor Shawn O'Neil  
Council President Caroline Berry  
Councilor Anne Shevlin  
Councilor Sam Scull  
Dana K. Booth  
Matthew Constantine  
Jennifer Constantine  
George Dunn  
Donna J. Hammersly, MPH  
Carole Hanna  
Jason Jones  
Andrew Karr  
Chelsea King

Charlotte Lehan, Former Mayor of Wilsonville  
David E. Mauk  
Kamran Mesbah  
Douglas S. Parker  
Janice M. Parker  
Dolores Passarelle  
Dick Spence  
Maegan Vidal  
Rick Wallace  
Jeffrey Zundel

And many more. Visit [www.wilsonvilleunited.com](http://www.wilsonvilleunited.com) for more information.

*(This information furnished by Christie Mayer,  
Wilsonville United)*

## CITY OF WILSONVILLE MEASURE 3-632

### ARGUMENT IN OPPOSITION:

#### **Voting is a good thing. Measure 3-632 is not.**

Voting is good. Democracy is good.

After all, Wilsonville has a long-standing tradition of giving voters a voice on urban renewal. For years, our City Council has asked the public for their opinion through advisory votes — and then honored the result.

That tradition matters. Here in Wilsonville, we believe voters deserve to be heard.

But Measure 3-632 is unnecessary.

**After all, Mayor Shawn O'Neil has already said that he hopes Wilsonville will vote this November on a revised Town Center urban renewal plan.**

So let's be clear: voting is a good thing. But Measure 3-632 is not.

Measure 3-632 is bad for Wilsonville because it would fundamentally change our city charter – our city's constitution:

- This charter amendment will force automatic new votes every single time there's a change to any urban renewal plan, **costing taxpayers money and forcing years-long delays.**
- Measure 3-632 has almost 900 words of fine print that put **costly requirements** on the city that make it much harder to even put an urban renewal decision on the ballot for voters to consider.
- **Those 900 words of fine print?** They're not on your ballot and not in this voter's pamphlet. Voters shouldn't be asked to approve a charter amendment without being able to **read it first.**
- The charter amendment will likely lead to **expensive lawsuits, costing taxpayers money** that should instead be going to making Wilsonville a better place to live, work, and raise a family.

**The League of Women Voters of Clackamas County believes in voting, but asks you to VOTE NO.**

**Voting is good. Measure 3-632 is not.**

**Vote No on Measure 3-632.**

*(This information furnished by Christie Mayer,  
Wilsonville United)*

*The above information has not been verified for accuracy by the county.*

*The above information has not been verified for accuracy by the county.*

## CITY OF WILSONVILLE MEASURE 3-632

### ARGUMENT IN OPPOSITION:

#### A message from Mayor Shawn O'Neil:

Measure 3-632 is a solution in search of a problem—and it risks taking Wilsonville backwards.

Urban renewal is one of the most important tools we have to improve our community without raising taxes. It works by using the growth in property tax revenue within a specific area to pay for improvements in that same area.

Urban renewal does not increase tax rates. It ensures that new development pays for itself, rather than shifting costs onto existing residents.

Here in Wilsonville, urban renewal has helped deliver real results—like the Boeckman Bridge and key infrastructure that supports our quality of life.

**I also want to be clear: I support bringing a refined Town Center Urban Renewal proposal back to Wilsonville voters this November.** This process should reflect community input and give residents the opportunity to decide how we move forward.

Measure 3-632 does not protect that voice—it complicates it. It adds layers of costly requirements and mandates repeated elections—even for minor updates—creating years of delay and unnecessary expense. It creates barriers and added costs that slow progress when our community needs thoughtful action.

Looking ahead, our Town Center represents an opportunity to create a true heart for Wilsonville—with local businesses, restaurants, gathering spaces, and housing options for families and seniors.

We need tools that move us forward—not measures that slow us down.

Please vote NO on Measure 3-632.

**Mayor Shawn O'Neil  
Wilsonville, Oregon**

*(This information furnished by Christie Mayer,  
Wilsonville United)*

## CITY OF WILSONVILLE MEASURE 3-632

### ARGUMENT IN OPPOSITION:

#### **IMAGINE: A Town Center for Wilsonville**

We know how special Wilsonville is. We value our neighborhoods, our parks, our families, and the sense of connection that makes this city feel like home.

Now imagine a Town Center that lives up to that same promise:

Imagine a place... where families stroll on safe sidewalks from shops to cafés to parks and art galleries.

Imagine a place... where seniors can age in place by creating opportunities to downsize and stay in Wilsonville.

Imagine a place... where housing is affordable for first-time homebuyers and young families.

Imagine a place... a welcoming, walkable, friendly, vibrant, convenient, and connected place.

#### **That is the kind of Town Center that Wilsonville deserves.**

For years, we've said we want more local dining, more shopping, more places to gather, and a Town Center that is easier to walk around, enjoy, and be proud of. A true community heart: a place that serves residents, supports local businesses, and gives people more reasons to stay in Wilsonville.

Wilsonville can have a Town Center that combines all those amenities with housing that fits our neighborhoods and is affordable to first-time homebuyers and seniors alike – allowing our young people to stay in their hometown and our seniors to age in place.

That future is worth protecting.

#### **But Measure 3-632 would STOP Wilsonville from achieving that beautiful vision.**

Instead of moving us forward, Measure 3-632 would add unnecessary hurdles, delays, and uncertainty right when Wilsonville needs momentum. Don't vote to make it harder to create the restaurants, shops, gathering spaces, and walkable sidewalks that we all want. **Vote NO on Measure 3-632.**

Kristin Akervall, former City Councilor  
Hilly Alexander  
Bill Bagnall  
Julie Fitzgerald, former Mayor of Wilsonville  
Cornelia Gibson  
Klaus Gibson  
Amanda Harmon  
Robert Renfro  
Michelle Labrie Ripple, former City Councilor  
Iona River  
Mary Rooney  
Susie Stevens, former City Councilor  
Danielle Vincent

And many more. Visit [www.wilsonvilleunited.com](http://www.wilsonvilleunited.com) for more information.

*(This information furnished by Christie Mayer,  
Wilsonville United)*

*The above information has not been verified for accuracy by the county.*

*The above information has not been verified for accuracy by the county.*

## CITY OF WILSONVILLE MEASURE 3-632

### ARGUMENT IN OPPOSITION:

Wilsonville neighbors and organizations you trust all agree:

#### VOTE NO ON MEASURE 3-632

Measure 3-632 is a charter amendment – a constitutional amendment for Wilsonville.

Three things you need to know:

- 1) Voters have had the opportunity to vote on every single urban renewal area ever considered by the City of Wilsonville and the results have been honored. **If things aren't broken, we shouldn't try to fix them with a complicated change to our city's constitution. Vote NO.**
- 2) This measure amends Wilsonville's charter, our city's constitution. Yet it's nearly impossible to find the almost 900-word amendment. It's not on your ballot and not in this voter's pamphlet. **We shouldn't alter our city's constitution without being given a chance to read exactly what we're changing it to. Vote NO.**
- 3) If this charter amendment passes, making new urban renewal areas too difficult to create, any new development or infrastructure would have to be paid for by higher property taxes on all Wilsonville residents. **Keep property taxes low for current residents! Vote NO.**

That's why Wilsonville organizations you trust – and many of your Wilsonville neighbors all urge you to Vote **NO on Measure 3-632**:

Democratic Party of Clackamas County  
Charbonneau Community Foundation

Nancy Andersen

Deborah Arthur

Jerry Baker

Steven Benson

Lisa Brice

Debi Carpenter

Mary E. Closson

Judith Dunn

Roger A. Fontes

Caitlyn Green

Jerry Greenfield

Bruce C. Hamlin

Susan C. Hanson

Lee C. Harker, MD

Chris Heydemann

Shelby Loberg

Deborah Melville

Ruby Charlene Metz

Marcia Nichols

Robert A. Nichols

Angela Z. Parris

Mary Pettenger

Anne Quigley

Susan Reep

Betty Reynolds, former School Board Member

Wayne Richards

Alisa Shiratori

Mark Smith

Tonja Willey

Deborah Zundel

And many more. Visit [www.wilsonvilleunited.com](http://www.wilsonvilleunited.com) for the full list.

*(This information furnished by Christie Mayer,  
Wilsonville United)*

## CITY OF WILSONVILLE MEASURE 3-632

### ARGUMENT IN OPPOSITION:

**GET THE FACTS: What is urban renewal?**

You may hear “urban renewal” and wonder if it means **higher taxes for you. It does not.**

Urban renewal is a financing tool that helps communities fix up tired, underperforming areas like Wilsonville's Town Center.

Here's how it works:

The City draws a boundary around an area that needs investment, and looks at how much property tax money is being collected in that area at that time. That revenue keeps going to schools, police, fire, the library, and other basic services just like it does now.

As new buildings are built or properties become more valuable, the amount of property tax collected in that area increases. That increase in property taxes collected above the original amount can help pay for improvements inside that urban renewal area – things like safer streets and sidewalks, parks and open spaces, utility upgrades, and other public improvements.

**There is no new tax. Urban renewal does NOT raise anyone's property tax rate.**

Instead, it uses the growth in property tax revenue within a specific area to help pay for that area's improvements.

That's why so many Oregon communities have used urban renewal to revitalize town centers and main streets – building new amenities, fixing infrastructure, creating much-needed housing, and improving quality of life without raising tax rates on current residents.

Here in Wilsonville, we've already used urban renewal to make lots of popular improvements – like the Villebois neighborhood, Town Center Park and Murase Park, Wilsonville High's gym, our City Hall, the Boeckman Bridge and roundabout, our sewage treatment plant, and more.

**One more thing you need to know: Measure 3-632 would make it much harder for Wilsonville to use this proven, no-new-taxes tool to finally fix Town Center and make other much-needed improvements in Wilsonville.**

Vote NO on Measure 3-632. Let's keep Wilsonville moving forward.

[www.wilsonvilleunited.com](http://www.wilsonvilleunited.com)

*(This information furnished by Christie Mayer,  
Wilsonville United)*

*The above information has not been verified for accuracy by the county.*

*The above information has not been verified for accuracy by the county.*

## CITY OF WILSONVILLE MEASURE 3-632

### ARGUMENT IN OPPOSITION:

**We need homes that let Wilsonville seniors stay in Wilsonville**

**Wilsonville Town Center can create the kind of homes that suit the neighborhood and allow seniors to downsize and age in place, with friends, family, and community nearby.** For many older adults, the choice today is between staying in a house that no longer fits their needs or leaving Wilsonville altogether.

But Measure 3-632 will make it harder to achieve that vision – so voting NO is a vote to preserve this vision of a Wilsonville that works for older adults who want to stay in our community.

Here's what one Wilsonville resident approaching retirement has to say:

"I love Wilsonville. I've built a life here. My friends are here, my routines are here, and my community is here. I don't want to leave Wilsonville just because I'm ready for a different kind of home as I get older.

"Right now, my place is just too much house. It's more space, more upkeep, and more yard than I need. What I want next is something simpler: one level, easy to lock up, easy to maintain, and within walking distance to doctors, restaurants, parks, coffee shops and other places I want to go.

"That's what's missing in Wilsonville. There aren't condos with elevators, nice sidewalks, and nearby amenities that let us downsize without giving up independence or quality of life.

"I'm glad we're talking about condo buildings that are five stories or less – a great fit for neighborhoods in Town Center where we can walk to dinner, meet friends for coffee, enjoy community events, and still stay in the city we love. I want to grow older here, not be pushed out of town."

**That's the potential of Wilsonville Town Center: helping our seniors retire with dignity as valued members of our community.**

Measure 3-632's costly barriers and delays would make that future harder to achieve.

**Please Vote NO on Measure 3-632.**

*(This information furnished by Christie Mayer,  
Wilsonville United)*

## CITY OF WILSONVILLE MEASURE 3-632

### ARGUMENT IN OPPOSITION:

**We need homes that are affordable for Wilsonville families and seniors**

Wilsonville is a great place to live. But for too many people, it's getting harder to afford to stay.

The Wilsonville Town Center plan is one way we can change that — by creating homes that fit into our neighborhoods and work for people at different stages of life.

But Measure 3-632 adds costly requirements that will make it difficult to realize that vision.

The Town Center would **allow seniors to age in place by providing opportunities to downsize and stay in Wilsonville**, staying close to friends, family, doctors, and community life. Far too often, downsizing today means leaving town. But thoughtfully designed homes near parks, services, and walkable streets mean older adults can remain independent and active in the city they love.

The Town Center would include homes that are within reach for **young families and first-time homebuyers** – especially young people who grew up here, but can't afford to stay today.

This isn't about high-rises or towers. Buildings in Wilsonville Town Center would be limited to **five stories**, with many areas lower, so new homes will fit in and maintain **Wilsonville's small-town feel**.

More housing choices in Town Center mean:

- More affordable homes for young families and first-time buyers.
- More downsizing options so seniors can stay in Wilsonville.
- More customers to support vibrant local shops and restaurants.
- More people able to live close to where they work, shop, and play.

But Measure 3-632 puts this vision at risk. **This misleading measure will make it harder and more expensive** to bring the Wilsonville Town Center vision to voters for approval.

**That's why the Portland Metropolitan Association of Realtors® have joined Oregonians for Affordable Housing to urge you to Vote NO on Measure 3-632.**

Visit [www.wilsonvilleunited.com](http://www.wilsonvilleunited.com) for more information.

*(This information furnished by Christie Mayer,  
Wilsonville United)*

## CITY OF WILSONVILLE MEASURE 3-632

### ARGUMENT IN OPPOSITION:

#### 1000 Friends of Oregon urges a No vote on Measure 3-632

We love Oregon.

We love the farms and forests that make Oregon special.

We love our parks, our open spaces, and our wild places.

We love our vibrant cities and small towns.

And we love Wilsonville.

We support the vision for Wilsonville Town Center: A vibrant neighborhood with local businesses, gathering places, restaurants, parks, and housing. A walkable community with housing options for seniors who want to age in place and first-time homebuyers and young families who want to put down roots in Wilsonville.

Strong communities adapt, reinvest, and grow in ways that strengthen the places where people already live. That's the Wilsonville Town Center vision.

Well-planned development that prioritizes walkability, bike access, and proximity to transit can reduce traffic congestion and improve quality of life. That's the Wilsonville Town Center vision.

#### **But Measure 3-632 would make it harder to realize that vision:**

- Measure 3-632 is a poorly written and misleading charter amendment that would create expensive delays and uncertainty.
- Measure 3-632 would make it more difficult for Wilsonville to invest in the future, revitalize existing areas, and deliver needed infrastructure and housing.

**At 1000 Friends of Oregon, we work to protect the places that make Oregon special: our farms and forests, our natural landscapes, and the livable communities Oregonians are proud to call home.**

That's why 1000 Friends of Oregon urges Wilsonville voters to Vote NO on Measure 3-632.

*(This information furnished by Christie Mayer,  
Wilsonville United)*

## CITY OF WILSONVILLE MEASURE 3-632

### ARGUMENT IN OPPOSITION:

#### **WASTEFUL AND EXPENSIVE**

Measure 3-632 is a charter amendment of nearly 900 words – a constitutional amendment for Wilsonville – stuffed with fine print and new procedural hoops. It doesn't simply "let people vote." It rewrites our city's constitution in a way that will waste money and bog down Wilsonville in red tape for years.

#### **Measure 3-632 Forces Automatic Re-votes and Repeat Elections: VOTE NO!**

Every time there's a "substantial" change to an urban renewal plan, taxpayers would pay again for election costs, voter information, and staff time. What's "substantial"? That one word will lead to endless lawsuits, costing taxpayers money and time that should be spent on making life better for Wilsonville residents, not expensive lawyers.

#### **Measure 3-632 Could Lead to Higher Property Taxes: VOTE NO!**

Urban renewal is structured so that new development helps pay for infrastructure and improvements. But Measure 3-632 will make it difficult for Wilsonville to continue using urban renewal as an investment tool.

Urban renewal makes new development pay for itself. Without urban renewal, the only way to fund improvements would be through higher taxes on all residents.

#### **Measure 3-632 Will Make Improving Wilsonville More Expensive: VOTE NO!**

Measure 3-632 will force projects to drag out for years. Delays are expensive. Construction costs go up. Interest rates change. Opportunities are lost. When projects slow down, Wilsonville residents and taxpayers will end up paying more and more.

#### **Measure 3-632 fails the basic test of common sense and fiscal responsibility: VOTE NO!**

Every dollar we pour into unnecessary elections and lawsuits is a dollar we're not spending on parks, public safety, street repairs, and a better Wilsonville Town Center. It makes no sense to risk raising our property taxes.

Lee Barckmann  
Jim Bernard  
Michael Bishop  
Paul Diller  
Andrew Engel  
Tim Knapp, former Mayor of Wilsonville  
Lisa Kreklow, LLC  
Laura LaJoie Bishop, DC  
Richard Martens  
Christie Mayer  
Scott Nichols, Five Cent Coins, Inc.  
Cathy Schwab  
Adrienne Scritsmeir  
Elaine Swyt  
Wilsonville UPS Store

*(This information furnished by Christie Mayer,  
Wilsonville United)*

*The above information has not been verified for accuracy by the county.*

*The above information has not been verified for accuracy by the county.*

# CANBY SCHOOL DISTRICT MEASURE 3-636

## REFERRED TO THE PEOPLE BY THE DISTRICT BOARD

**Caption:** 5 Year Levy to Preserve Canby Schools, Teachers, Class Size

**Question:** Shall District preserve Canby Schools, class sizes, programs by levying \$1.50/\$1,000 assessed value for five years beginning 2026-27? Oversight required. This measure may cause property taxes to increase more than three percent.

**Summary:** The Canby School District projects a significant shortfall for the 2026—27 school year due to rising costs and inadequate state and federal funding. The District has already eliminated approximately 11% of its budget. Without this levy, further reductions may include:

- “ Imminent measures to close schools
- “ Elimination of approximately 60 teaching and support positions
- “ Larger class sizes
- “ Reductions to career and technical education programs
- “ Reductions to music, art, reading supports and counselors

If approved, the Canby Schools Levy would provide an estimated \$5.9 million annually in funding for five years to help maintain:

- “ Future viability of neighborhood schools
- “ Teaching positions
- “ Reasonable class sizes
- “ Career and technical education, AP and dual credit programs
- “ Counseling and nursing supports
- “ Elementary reading supports
- “ Music and arts
- “ Athletics and extracurricular offerings

Funds will be tracked in a specific sub-account, and a citizen budget committee and school board oversight will monitor expenditures to verify funds are used as approved by voters. No levy funds will be spent on administration. Fund expenditures will be included in the District’s annual third-party audit. This levy will produce an estimated \$31.5 million over five years. Estimated total for each year: 2026-27 \$5.9 million; 2027-28 \$6.1 million; 2028-29 \$6.3 million; 2029-30 \$6.5 million; 2030-31 \$6.7 million.

## EXPLANATORY STATEMENT

The Canby School District Board of Directors has referred a five-year Local Option Levy to voters. The levy election is scheduled for May 19, 2026, and if approved would begin in the 2026-27 school year and run through 2030-31.

### Background and Purpose

The Canby School District projects a significant budget shortfall for the 2026-27 school year. Inadequate state and federal funding, rising costs, and unfunded mandates have created an estimated \$6.3 million deficit — an approximate 20% reduction to the District’s overall budget. The District has already taken cost-saving steps, reducing 11% of its budget in the current 2025-26 school year including the reduction of 74 full-time equivalent positions; increases in class sizes; and a 50% reduction to art and music programs in grades K-6.

### Potential Impacts Without the Levy

Without a local option levy, the District projects further reductions would be required, including:

- Future consolidation of neighborhood schools in 2027-28
- Elimination of approximately 60 teaching and education support positions

The full text of this measure is available online at [www.clackamas.us/elections](http://www.clackamas.us/elections)

- Larger class sizes—approximately 1:30 in grades K-6 and 1:35—40 in grades 7-12
- Blended K-6 classrooms and potentially fewer school days
- Reduction or elimination of career and technical education programs
- Reduction or elimination of music and art programs
- Reduction of K-6 reading supports and school-based counseling and nursing services
- Reduction or elimination of dual credit and Advanced Placement offerings
- Reduction or elimination of athletic programs and extracurriculars at both middle and high school

### How Levy Funds Would Be Used

Levy revenue would be used exclusively for the benefit of Canby students. No funds would be directed to the state, another school district, or to hire additional administrators. Funds would maintain:

- Future viability of neighborhood schools
- Teaching positions and other school-based staff
- Reasonable class sizes
- Career and technical education (Agriculture, Construction, Early Childhood, Manufacturing), Advanced Placement, and dual credit programs
- Counseling and nursing supports
- Elementary reading supports
- Music and arts programs
- Athletics and extracurricular offerings

### Accountability and Oversight

The District will establish a dedicated fund account for levy collections to ensure detailed accounting and transparency. Expenditures will be subject to annual third-party audits with public reports. A citizen budget committee and the School Board will provide oversight to verify funds are spent as voters intended. No levy funds will be spent on administration.

### Cost Information

If approved, the levy rate would be \$1.50 per \$1,000 of assessed property value beginning in 2026-27. For example, a property owner with a median assessed value of \$285,361 (which differs from real market value/Zillow) would pay approximately \$35.67 per month.

The levy is estimated to generate approximately \$5.9 million in its first year, growing modestly over five years. Projected annual totals: 2026-27: \$5.9 million; 2027-28: \$6.1 million; 2028-29: \$6.3 million; 2029-30: \$6.5 million; 2030-31: \$6.7 million—totaling an estimated \$31.5 million. Actual amounts will depend on changes in assessed and real market values of properties within the district.

Learn More at [CanbySchoolsLevy.Org](http://CanbySchoolsLevy.Org)

## CANBY SCHOOL DISTRICT MEASURE 3-636

### ARGUMENT IN FAVOR:

**Measure 3:636 - Strong. Local. Accountable**

**STRONG: Strong schools are the foundation of a strong community.** They support families, strengthen our local economy, and reflect the values of our community. As members of the **Canby School District Board of Directors**, we take seriously our responsibility to steward public resources while ensuring students receive a high-quality education.

After careful review of the district's financial outlook, we unanimously voted to refer this levy to the community. This decision was not made lightly. **Canby, we are at a critical crossroads for the educational experience of our students.**

Inadequate state and federal funding, rising costs, and unfunded mandates have created a budget crisis for schools across the state. Canby has taken significant steps to reduce costs, cutting 11% of its budget for this year, including eliminating more than 70 positions and reducing operational budgets. These reductions have already significantly impacted classrooms and programs from K-12.

The district now projects a \$6.3 million budget deficit for the 2026–27 school year.

**Without this levy, the impact on students will be severe.**

We will need to eliminate up to 60 additional positions, reducing the number of staff in our schools by over 25% over the course of two years. Class sizes would increase across all grade levels, and elementary classrooms would be blended.

Important programs will be reduced or eliminated, including Career and Technical Education, music, counselors, sports and reading supports.

**LOCAL: If approved, levy funds will support classrooms and student programs—not administration. Every dollar raised will stay in Canby to serve Canby students.**

**ACCOUNTABLE: Here's our promise to you: every dollar will be tracked and subject to citizen oversight. Funds ONLY go to educators, zero to administration. All funds will be placed in a separate account for easy tracking**

**Vote YES on Measure 3-636 to put the kids of Canby first.**

#### **Canby School Board Members**

Sara Magenheimer, Chair  
Shelley Visser, Vice-Chair  
Mark Bigej  
Katie Iverson  
Kelly Oliver  
Tom Pierce  
Audrey Traaen

*(This information furnished by Sara Magenheimer)*

## CANBY SCHOOL DISTRICT MEASURE 3-636

### ARGUMENT IN FAVOR:

**A Note From Your Neighbors - Protect our Neighborhood Schools**

#### **Join Us in Voting YES on Measure 3-636**

Strong schools are the heart of a healthy community. In Canby, our schools reflect the values that make this community special—neighbors supporting neighbors, families working together, and children growing up in a place where they are known, valued, and encouraged to succeed. This is why we support this levy.

**Our schools are family-centered places where children and families are known, cared for, and supported.**

Students are not just numbers in our classrooms. Teachers, counselors, coaches, and staff build relationships to help students feel safe, confident, and ready to learn. Our neighborhood schools allow families to build connections, make lifelong friends and allow our community to grow stronger together.

In a community like Canby, these relationships extend beyond the classroom. **Many of the educators and staff in our schools live in our community. They are our friends, our neighbors, and fellow parents.** When we support our schools, we support the people who dedicate their lives to helping our children succeed.

**Right now, our schools are facing serious financial challenges that could significantly affect classrooms, programs, and the adults who support students every day.**

Our children deserve stability, opportunity, and the support of our community. By supporting strong neighborhood schools, we ensure every child has the opportunity to learn, grow, and succeed in a community that believes in them.

**Investing in our schools is an investment in the future of Canby.**

**We encourage you to Vote Yes for the Canby Schools Levy.**

Sarah Fitts  
Eugene Gascho  
Douglas Gingerich  
Gloria Gingerich  
Ann Johnson  
Jennifer Keeney  
Kevin R. Keeney  
Clifford David Lien  
Stanley J. Oyer  
Vonita F. Oyer  
Julie Roach  
Skylar Rodolph  
Linwood Rush  
Carol Stanfield  
Cortney Tamimi  
Rosalie Thompson  
Brooke Toma  
Jorge Tro  
Jennifer Turner  
Ruth A. Schoon Vermillion  
William H. Vermillion  
Kristen Wohlers  
Gary J. Wright  
Reneé L. Wright  
Cheston W. Zimmer  
Heather Wright Zimmer

*(This information furnished by Danielle Apken)*

*The above information has not been verified for accuracy by the county.*

*The above information has not been verified for accuracy by the county.*

## CANBY SCHOOL DISTRICT MEASURE 3-636

### ARGUMENT IN FAVOR:

#### Local Businesses Support Canby Schools Good Schools = Strong Economy

As business owners and employers in this community, we support the Canby School District levy. Strong schools are essential to a strong economy, and the long-term viability of our businesses depends on the health and stability of our community.

We partner with schools through internships, mentoring and Career and Technical Education (CTE) programs. These partnerships help students gain real-world skills while building a future workforce that is prepared, motivated, and invested in Canby. Many of our employees are graduates of our schools, returning to raise families and work in the businesses they once visited.

#### Stable, well-funded schools make Canby an attractive place for families to live and work.

Our families support local restaurants, shops, service providers, and community organizations. Economic stability is interconnected — thriving schools create thriving neighborhoods, which in turn support thriving businesses.

Without this levy, continued budget reductions will weaken programs that directly prepare students for local careers.

#### Schools are investments in our future labor force and local leaders.

This levy keeps local dollars under local control, ensuring funds stay here to support Canby students and families. Investing in our schools is investing in the long-term strength of our community and the sustainability of local businesses.

#### Vote YES to support students, economic stability, and the future of our town.

Tim Austen, Austen's Body Shop  
Kelsey Cordill, Cutsforth's Market  
Joel Cutsforth  
Kathleen M. Cutsforth  
Tanner Cutsforth  
Curtis Ellyes, Vision Diesel  
Jeremy Gingerich, CPA  
Nicholas Gitts  
Ashley Larson, Waldman & James Realty Group, Keller  
Williams Portland Premiere  
Dori Leder, Cones  
Ben Millar, Millar's Point S Tire & Auto Service  
Kyle Millar, Millar's Point S Tire & Auto Service  
Joan Monen, Wild Hare Saloon and Cafe  
Kerrie Oliver, Oliver Insurance  
Steven Roach  
Heather Schloe  
Brendon Schloe  
Jeff Scott  
Mary Jeanne Sheveland, Broker RE/MAX Equity Group  
James Simnitt  
Matt Stutes, Cornerstone Wealth Management  
Megan Waterman, The Book Nook  
Rachel Yamakawa  
Bethany Zito, B's Bake Shoppe

*(This information furnished by Sara Magenheimer)*

## CANBY SCHOOL DISTRICT MEASURE 3-636

### ARGUMENT IN FAVOR:

#### Save our Hands On Learning Programs!

#### Vote Yes for Real World Experience in Our Schools

Career and Technical Education (CTE) programs in the Canby School District provide students with practical skills, hands-on learning, and real-world experience that connect classroom education to meaningful career pathways.

#### Without the passage of this levy, the Canby School District will not be able to sustain all the CTE programs.

Canby CTE courses introduce students to fields such as agriculture, animal science, horticulture, construction, manufacturing, technology, early childhood education, culinary arts and other skilled trades. Through hands-on instruction, internships, dual-credit opportunities, and project-based learning, students graduate with applicable skills that prepare them for employment, apprenticeships, community college, or four-year universities.

#### CTE concentrators graduate at 99%, prepared for their next steps in life.

Programs connected to agriculture and technical education, including opportunities through FFA, help students develop leadership abilities, problem-solving skills, and public speaking experience. These programs build confidence and responsibility while preparing students for careers that are essential to our local and regional economy.

#### In industries facing workforce shortages—including construction, manufacturing, horticulture, and other skilled trades—CTE programs help prepare the next generation of workers.

CTE programs require specialized equipment, supplies, facilities, and trained instructors. Students gain familiarity with tools, safety standards, teamwork expectations, and industry certifications, increasing employability after graduation.

Strong CTE pathways also support local businesses by building a skilled workforce pipeline right here in our own community. Without stable funding, opportunities for hands-on career training will be reduced or lost.

#### Investing in Career and Technical Education is an investment in student opportunity, workforce readiness, and the long-term economic vitality of our community.

#### Vote Yes and Save Hands on Learning

Richard Anderson  
Rep Matt D. Bunch  
Brian L. Field  
Laurel T. Field  
Timothy Guttridge  
Shirine Kernan  
Darren Monen

*(This information furnished by Sara Magenheimer)*

*The above information has not been verified for accuracy by the county.*

*The above information has not been verified for accuracy by the county.*

## CANBY SCHOOL DISTRICT MEASURE 3-636

### ARGUMENT IN FAVOR:

#### Canby Sports and Athletic Organizations

#### Vote YES on Measure 3-636 to Save Youth Sports

Youth athletics and school sports are an important part of what helps our kids grow into healthy, confident adults. Community sports organizations across Canby support the upcoming levy for the Canby School District because **strong schools and strong youth programs go hand-in-hand.**

School athletics provide more than competition. They teach teamwork, discipline, perseverance, and leadership. Participation in sports also supports physical and mental health, helping students build positive habits that last a lifetime. For many students, athletics are also a powerful connection point to school — keeping them engaged, motivated, and supported by peers and mentors.

**Without stable funding, middle school sports may be eliminated and high school athletic programs will face across-the-board reductions.**

Community youth sports are tied to school programs. **When schools are strong, local youth leagues are stronger too.** Coaches, facilities, and shared programs help create a full system of opportunities for kids at every age. Together, they help ensure students stay active, connected, and engaged.

#### Healthy schools help create healthy communities.

When students have access to athletics, mentorship, and positive activities, communities benefit from stronger relationships, safer environments, higher graduation rates, and children who feel connected to where they live.

**This levy protects opportunities for students to learn, grow, and compete while maintaining the strong school-community partnerships that make Canby special.**

Supporting our schools and this levy means supporting healthy youth programs and a healthy community for everyone.

Jess Doman, Whiskey Hill Kids Sports Association  
Jim Gadberry  
Shantel Harney, Canby Kids Inc.  
Mason Haycock, Whiskey Hill Sports Board Basketball President  
Mitch Magenheimer, Whiskey Hill Kids Soccer, President  
Ryan Oliver

*(This information furnished by Danielle Apken)*

*The above information has not been verified for accuracy by the county.*

## CANBY SCHOOL DISTRICT MEASURE 3-636

### ARGUMENT IN FAVOR:

#### Canby School Board Community Budget Committee

As community members serving on the district's Budget Committee, our role is to closely review the Canby School District's finances and work with the Canby School Board to ensure responsible budgeting and fiscal oversight. Through this work, **we have seen firsthand the difficult financial reality facing our schools.**

Last year, the District made significant reductions to staff across the board to balance its budget. These decisions were not easy, but they were necessary. Unfortunately, those reductions have significantly stretched staffing, programs, and student supports.

**There is no more room for additional cuts without serious harm to students and classrooms. Without this levy, the District's planned additional cuts would have an extremely negative impact on students across Canby's neighborhood schools, which are expected to include:**

Fewer adults would be available in school buildings to support students academically and emotionally. Counseling and student support services would be reduced at a time when student mental health needs continue to grow.

**Class sizes would increase, making it far more difficult for teachers to provide individualized attention to students.**

Programs that keep many students engaged in school would also be reduced or eliminated — including Career and Technical Education (CTE), athletics, music, and art. These programs are not extras for many students; they are the opportunities that help students stay connected, discover their talents, and build pathways toward future careers.

**The cumulative effect of these reductions would dramatically weaken the learning environment for students across the district.**

As Budget Committee members, we believe the consequences of the District's additional planned cuts to balance the budget in the absence of this levy would be deeply felt by students, families, and the entire community.

We support the Board's decision to give our community the opportunity to evaluate this levy, and to have a voice in the decision to provide additional funding for our schools.

Dan Drazan  
Riley Henderson  
Kaytee Horton  
Lauren Stutes  
Sean Warren

*(This information furnished by Sara Magenheimer)*

*The above information has not been verified for accuracy by the county.*

## CANBY SCHOOL DISTRICT MEASURE 3-636

### ARGUMENT IN FAVOR:

#### Save our Beautiful Music in Canby

Music has long been an important part of the educational experience in Canby schools. As choir and band alumni supporting local students, we know firsthand the lasting impact school music programs have on students, families, and the broader community.

#### Music and art education is not just about performance—it builds confidence, discipline, and creativity.

Students who participate in band and choir learn dedication, time management, and perseverance while developing artistic skills that stay with them for a lifetime. For many students, music programs are where they find their place in school and develop friendships and mentorships supporting a successful school experience.

#### School music programs create opportunities for students to belong, connect, and thrive.

Concerts and performances bring families and neighbors together while showcasing the talent and hard work of local students. Canby is widely renowned for their outstanding choir, band and theater productions and the impact these performances have on the broader community. These programs strengthen the connection between schools and the community in tangible ways.

#### Without stable funding, music and art programs are at risk.

Music supports academic success. Studies consistently show that students involved in music demonstrate stronger engagement in school and improved learning habits. **A well-rounded education includes the arts.** This levy helps protect music and art education and ensures future students can experience the same opportunities that have shaped generations of Canby students.

#### Please help save these programs for our students and vote YES.

Grey Bell	Sarah Oakley
Kristin Oakes	Emily Ray
Karen Tro	Jonah Schiewe
Jessica Beaver	Alex Villemyer
Cameron Davis	Ksenna Dalrymple
Emerson J. Sager	Kai Laitinen
TA Adams Keller	Mika Steyskal
Landon Chinn	Andrew Gingerich
Abigail Keefe	Jason Gingerich
Tasha Ball	Andrea Collins Engelhardt
Maddie Skogman	Louise Gingerich
Kristina L Keefe	Charles Gingerich
Emma Rondeau	Sheryl Gingerich
Emma Gingerich	Dorothy Brenneman
Peyton Daugherty	Nicole Brenneman
Benjamin Pickthorn	Jana Gingerich
Owen Wade Lewis	Craig Gingerich
Laney Wakefield	

*(This information furnished by Danielle Apken)*

*The above information has not been verified for accuracy by the county.*

## CANBY SCHOOL DISTRICT MEASURE 3-636

### ARGUMENT IN FAVOR:

#### Canby Police Officers Association Supports Levy 3-636 Strong, vibrant schools build a safer community

To Our Canby Community,

We are writing to share appreciation for the many people in our community who work every day to support Canby's students, families, and schools. Our school district plays a central role in shaping not only the future of our young people, but the health and safety of the community we all share.

Strong schools help create a strong community. When students feel connected, supported, and encouraged, they build the confidence and stability that carry over into the broader community. Programs that foster positive relationships, keep students engaged, and provide safe spaces for learning contribute to a more welcoming and secure environment for everyone.

Community safety is deeply connected to how well we work together—families, educators, local partners, and neighbors—to give young people the tools they need to thrive. Whether through teachers, administrative staff, coaches, school resource officers, or shared community events, schools help create the relationships that make Canby a place we are all proud to call home.

As conversations continue about the Canby School District's 2026 proposed levy, we hope community members take the time to learn about the district's needs, seek out accurate information, and participate in the decision-making process. Our strength as a community comes from staying informed, listening to one another, and making thoughtful choices about our shared future. The Canby Police Officer Association (CPOA) is in support of this proposed levy to ensure our children and community have the resources they need to remain one of the best places to live.

Thank you for everything you do to support a safe, connected, and thriving Canby.

Respectfully,

SGT Jefre Johnson  
CPOA President

Brandon Leonard, LCSW  
CPOA Vice-President

*(This information furnished by Sara Magenheimer)*

*The above information has not been verified for accuracy by the county.*

## CANBY SCHOOL DISTRICT MEASURE 3-636

### ARGUMENT IN FAVOR:

#### **A Message from Past Canby School District Board of Directors**

As former Canby school board members, we have seen what is possible when community and schools work together with a shared purpose. For decades, Canby residents, educators, families, and local partners have built a school system that reflects our community values—strong neighborhood schools, meaningful opportunities for students, and careful stewardship of public resources.

#### **Through thoughtful financial management and strong community partnership, Canby schools have created a comprehensive educational experience for students even with limited funding.**

Our neighborhood schools allow educators to build strong relationships with students and families, creating supportive learning environments where children feel connected and valued. **Our students and families are known.**

Canby's robust Career and Technical Education programs prepare students for real-world success. Programs in agriculture, construction, early childhood development, manufacturing, culinary arts and digital design provide hands-on learning and career pathways. **The district's construction program is a powerful example—over two years students build a house from the ground up, gaining practical skills and industry experience.** Students who concentrate in CTE graduate at an extraordinary rate—approximately **99%**.

Canby schools offer rigorous academic opportunities preparing students for college and beyond. **Advanced Placement and dual credit courses allow students to graduate with substantial college credit, helping them enter higher education prepared and confident.**

These opportunities did not happen by accident. They are the result of years of partnership, careful budgeting, and a shared commitment to doing what is best for students.

The proposed budget cuts will significantly impact the programs we, as a community, have built for our students. These opportunities have made Canby schools strong, family-centered, and community connected.

#### **Supporting this levy is critical to continuing the partnership between schools and community that has helped generations of Canby students succeed.**

Angi Dilkes  
Diane Kocher Downs  
Kristin A. Downs  
R. Roger Reif  
Sandra Ricksger  
Andrew P. Rivinus  
A. Wayne Scott  
Thomas Scott  
Rob Sheveland  
Charles Stinson

*(This information furnished by Sara Magenheimer)*

*The above information has not been verified for accuracy by the county.*

## CANBY SCHOOL DISTRICT MEASURE 3-636

### ARGUMENT IN FAVOR:

Canby Education Association supports a Yes Vote for Canby Local Levy Option!

Canby educators, including counselors, nutritional staff, teachers, custodians, and all the people who support student learning, aspire to give each student individualized time and attention as they gain the skills needed to become our next generation of community leaders and members. Our students' needs have never been higher, yet each day we rise to meet the challenge of supporting the youngest in our community.

As educators in Canby, we see first-hand the effects of last year's budgetary cuts, which led to significant reductions in staff this school year. This year, more than ever before, we feel the impact of fewer adults in our buildings. With the current budget outlook, we will face further dramatic cuts without additional funding.

The Canby School Board and the District worked together to create a Local Levy Option that helps level the playing field compared to surrounding districts and puts local dollars to work for local learning. Educators in Canby know that our community cares about one other: we do what we can, when we can, to make sure we each have what we need to thrive.

The School Board's commitment to accountability and transparency within the levy show an understanding of our community's needs and concerns, and is a pragmatic approach to a dire and unforeseen situation. Canby School District's focus on educational excellence is a promise to our students, families, and community.

A yes vote for the Local Levy Option supports the staff and programs that help our children learn, grow, and thrive. A yes vote holds the school district accountable to the local funds entrusted by Canby, for Canby. A yes vote is a commitment to local schools and local learning.

Please join the Canby Education Association in supporting Canby Local Levy Option and vote yes for your local community!

*(This information furnished by Cameron Armstrong, Canby Education Association)*

*The above information has not been verified for accuracy by the county.*

## CANBY SCHOOL DISTRICT MEASURE 3-636

### ARGUMENT IN OPPOSITION:

Taxpayers Association of Oregon

urges No on 3-636

At \$1.50/\$1,000 this is one of the larger property taxes increases in all of Oregon.

Yet, student enrollment recently dropped 10%.

If enrollment is dropping shouldn't the cost go down?

Why do we have to pay higher taxes for fewer students?

Here is why this matters: Clackamas County and the Metro area are among the worst affordable housing markets in America (Axios 1/28/26). People cannot afford to live here.

One reason that families with children are leaving the district (-10%), is because home prices are too expensive. Raising property taxes makes homes unaffordable. If we raise property taxes every time people leave, we will be in a doom loop.

The official explanation to support this measure says this will help reduce class size. But wait? Is not the class size shrinking already by 10%?

We recognize the need for tax increases, but do they always have to be so high? The Canby School District should come back with a more modest request that we can all afford.

25 years of daily tax and political news at  
[OregonWatchdog.com](http://OregonWatchdog.com)

Join the movement to keep taxes low & stop government waste at [OregonWatchdog.com](http://OregonWatchdog.com)

*(This information furnished by Jason Williams,  
founder Taxpayers Association of Oregon (1999))*

*The above information has not been verified for accuracy by the county.*

## Make a Plan to Vote



### Your Vote Counts!

Make sure your voice is heard by voting in the May 19, 2026 Primary Election.

### Make a plan to vote.

- **Do you know where you will receive your ballot?** Is your registration up-to-date?
- **When will you vote?** Ballots are mailed to voters April 29 and are due Election Day, May 19 by 8 p.m.
- **How will you return your ballot?**

**By Mail** - Must be postmarked by Election Day, May 19. No stamp required. Mail back one week before Election Day.

**By Official Ballot Drop Box** - Must be deposited by 8 p.m. on Election Day, May 19.

### Don't forget to sign!

Your ballot cannot be counted if you do not sign the return envelope. Every signature is checked against the registration signature on file, and the signature must match for the ballot to be verified and counted.

### Questions?

**Contact Clackamas County Elections**  
503-655-8510 | [elections@clackamas.us](mailto:elections@clackamas.us)  
[clackamas.us/elections](http://clackamas.us/elections)

# NEWBERG SCHOOL DISTRICT MEASURE 36-239

## REFERRED TO THE PEOPLE BY THE DISTRICT BOARD

**Caption:** 5 Year Levy to Preserve Neighborhood Schools, Teachers, Class Sizes

**Question:** Shall District preserve neighborhood schools, teachers, and class sizes; levy \$1.20/\$1,000 assessed value for five years beginning 2026-27? This measure may cause property taxes to increase more than three percent.

**Summary:** Newberg School District No.29J projects an approximate \$4.5 million funding shortfall for the 2026-27 school year. This gap reflects the cost of restoring a full school year and covering inflation and other required increases; inadequate state funding, and insufficient reserves (used after the 2023-24 financial hardship).

Reductions may include:

Closure of 2 neighborhood schools

25 Full-time Teaching positions

10 Full-time non-teaching positions

5 School days

Loss of academic programming and supports

If approved, the Local Schools Levy would provide an estimated \$6 million annually in funding for five years to help maintain current operations including funding for:

Existing neighborhood schools;

Teaching positions;

Reasonable class sizes;

Full academic school year;

Sufficient reserves to manage future funding gaps.

Funds will be tracked in a specific sub-account, and a citizen budget committee and school board oversight will monitor expenditures to verify funds are used as approved by voters. No levy funds will be spent on administration, building repairs, or maintenance. Fund expenditures will be included in the District's annual third party audit.

This levy will produce an estimated \$32,500,000 over five years. Estimated total for each year: 2026-27 \$6,100,000; 2027-28 \$6,300,000; 2028-29 \$6,500,000; 2029-30 \$6,700,000; 2030-31 \$6,900,000. The estimated tax cost for this measure is an ESTIMATE ONLY based on the best information available from the county assessor at the time of estimate and may reflect the impact of early payment discounts, compression and the collection rate.

## EXPLANATORY STATEMENT

Newberg-Dundee Public Schools serves approximately 4,000 students across 10 schools—including 6 elementary schools, 2 middle schools, and 2 high schools—in the cities of Newberg and Dundee, primarily in Yamhill County.

### What

The Newberg School District No. 29J Board of Directors has referred a five-year Local Option Levy to voters. The levy election is scheduled for May 19, 2026, and if approved would begin in the 2026-27 school year and run through 2030-31.

### Background and Purpose

Newberg School District No. 29J projects an approximate \$4.5 million funding shortfall for the 2026-27 school year. This gap reflects the cost of restoring a full school year, covering inflation and other required cost increases, insufficient state funding, and depleted reserves drawn down during the 2023-24 financial hardship. The District has already taken significant cost-saving steps, including reducing 76.75 full-time equivalent positions, strengthening internal financial controls, reducing building discretionary funds by 20%, and freezing staffing levels.

### Potential Impacts Without the Levy

Without a local option levy, the District projects further reductions would be necessary and could include:

- Closure of neighborhood schools
- Elimination of 25 full-time teaching positions

The full text of this measure is available online at [www.clackamas.us/elections](http://www.clackamas.us/elections)

- Elimination of 10 full-time non-teaching positions
- Loss of 5 school days from the academic calendar
- Loss of academic programming and student supports

### How Levy Funds Would Be Used

Levy revenue would be used exclusively for Newberg students and would not be directed to the state for distribution under the state school funding formula. No levy funds would be spent on administration, building repairs, or maintenance. Funds would support:

- Preserve existing neighborhood schools
- Maintain teaching positions
- Reasonable class sizes
- A full academic school year
- Sufficient reserves to manage future funding gaps

### Accountability and Oversight

The District will establish a dedicated fund account for levy collections to ensure detailed accounting and transparency. Expenditures will be included in the District's annual third-party audit. A citizen budget committee and the School Board will provide oversight to verify funds are spent as voters intended. No levy funds will be spent on administration, building repairs, or maintenance.

### Cost Information

If passed, the proposed Newberg Schools Levy would raise approximately \$6.1 million at a rate estimated not to exceed \$1.20 per \$1,000 of taxable assessed value within the district for five years. For example, a homeowner in the Newberg-Dundee School District with a mean assessed value of \$330,000 would pay approximately \$33.00 per month.

Actual amounts raised will depend on changes in the assessed and real market value of properties within the district. The levy is estimated to generate approximately \$6 million annually, totaling an estimated \$32.5 million over five years. Projected annual totals: 2026-27: \$6.1 million; 2027-28: \$6.3 million; 2028-29: \$6.5 million; 2029-30: \$6.7 million; 2030-31: \$6.9 million.

Learn More at [NewbergSchoolsLevy.org](http://NewbergSchoolsLevy.org)

**NO ARGUMENTS IN FAVOR/OPPOSITION TO THIS  
MEASURE WERE FILED**

# RIVERDALE SCHOOL DISTRICT MEASURE 26-263

REFERRED TO THE PEOPLE BY THE DISTRICT BOARD

**Caption:** Riverdale Five-Year Local Option Tax for District Operations

**Question:** Shall Riverdale levy \$1.67 per \$1,000 of assessed value for operations for five years beginning FY2026-27? This measure may cause property taxes to increase more than three percent.

**Summary:** Since 2000, voters have approved a local option levy to support Riverdale School District 51J operations. This measure would authorize the District to levy a property tax of \$1.67 per \$1,000 of assessed value each year for five years to help finance District operations. This measure represents an increase to the District's current local option levy rate of \$1.37 per \$1,000 of assessed value.

The local option levy provides funding to retain teachers and support the educational programs offered at Riverdale. If approved, this measure would provide additional funding to support Riverdale's instructional programs, staffing, and general operations. If not approved, the District would need to reduce its 2026-27 budget by more than \$1,000,000, the estimated equivalent of cutting seven teachers or 21 school days.

The tax rate of \$1.67 per \$1,000 of assessed value equals an estimated \$167 per year for every \$100,000 of assessed value, which is an increase of \$30 per year per \$100,000 of assessed value compared to the current levy.

The local option levy is projected to raise \$7,530,900 over five years:

\$1,418,300 in 2026-2027  
\$1,461,000 in 2027-2028  
\$1,505,400 in 2028-2029  
\$1,550,000 in 2029-2030  
\$1,596,200 in 2030-2031

## EXPLANATORY STATEMENT

### What is the Local Option Measure?

The District's current local option levy expires on June 30, 2026. Without voter approval, the levy will end and funding will drop to zero. This measure would establish a five-year levy of \$1.67 per \$1,000 of assessed value, replacing the expiring levy. All funds generated remain in Riverdale School District and are used to support the education of Riverdale students.

### Why does the Riverdale School District need Local Option revenues?

State funding has not kept pace with the actual cost of educating students. While state allocations have increased in recent years, funding available for classroom instruction and student services has remained relatively flat when compared to inflation and rising operational costs. The Local Option Levy provides essential revenue to support staffing, instructional programs—including the International Baccalaureate Program—and district operations. In 2025, Niche ranked Riverdale as the #1 Public High School and #1 Public K-8 in Oregon.

- In 2024–25, Riverdale received approximately \$11,000 per student in state funding, while the actual cost to educate a student exceeded \$19,000. The District maintains its current level of education and support largely through the Local Option Levy and Foundation support. Without levy funding, the District would need to make significant reductions to services.

### What will the passage of this measure do?

The levy would continue funding that voters have approved for the past 25 years (2000, 2005, 2010, 2015, and 2020). The

The full text of this measure is available online at [www.clackamas.us/elections](http://www.clackamas.us/elections)

rate has not increased in the last ten years. Local Option funding supports teacher retention, instructional programs, and staffing. It helps maintain academic offerings, including art and music, and supports general operations. If the levy is not approved, the District would need to reduce the 2026–27 budget by more than \$1,000,000, estimated to be equivalent to eliminating seven teaching positions or reducing approximately 21 school days.

### How will the Local Option dollars be used?

Local Option revenues are part of the operating budget and support:

- Retention and hiring of experienced teachers
- Maintaining small neighborhood school experiences
- Supporting academic and enrichment programs
- Instructional materials and supplies
- Operational needs such as security and facility maintenance

### How much will the levy raise?

This Levy is projected to raise \$7,530,900 over five years:

- 2026–27: \$1,418,300
- 2027–28: \$1,461,000
- 2028–29: \$1,505,400
- 2029–30: \$1,550,000
- 2030–31: \$1,596,200

### How will this levy affect my taxes?

This five-year levy would replace Riverdale's current local option levy rate of \$1.37 per \$1,000 of assessed value with a new levy of \$1.67 per \$1,000 of assessed value, a difference of \$.30 per \$1,000 of assessed value.

- For a home with an assessed value of \$1,000,000, the estimated cost is \$1,670 per year (\$139 per month), approximately \$300 more per year, or \$25 more per month than the current rate. Actual tax amounts may vary due to assessed value, Ballot Measure 5 limitations, compression, and collection rates.

Submitted by:  
Chris Russo, Superintendent  
Riverdale School District 51J

**NO ARGUMENTS IN OPPOSITION TO THIS  
MEASURE WERE FILED**

## RIVERDALE SCHOOL DISTRICT MEASURE 26-263

### ARGUMENT IN FAVOR:

#### RIVERDALE SCHOOL BOARD SUPPORTS A YES VOTE ON MEASURE 26-263

Riverdale School District has long been known for excellent teachers, strong academics, and a deeply engaged community. That reputation exists because our community has consistently invested in our schools. **Since 2000, Riverdale voters have approved a local option levy every five years to support the programs and staffing that make our schools exceptional.**

Today, Riverdale continues to deliver results. Riverdale High School is ranked the **#1 Best Public High School in Oregon** by Niche, and Riverdale Grade School is ranked the **#1 Best Public K-8 School in Oregon**. This year also marked an exciting milestone: **Riverdale High School launched the International Baccalaureate (IB) Diploma Programme**, expanding opportunities for students to develop as critical thinkers, creative problem-solvers, and globally minded leaders.

**The current levy, which has helped support these accomplishments, expires in June 2026.** Without voter approval, this funding would drop to zero, requiring the District to reduce its budget by **more than \$1,000,000 per year — an impact equivalent to losing approximately seven classroom teachers or cutting 21 school days.**

As members of your Riverdale School Board, we are committed to careful stewardship of community resources and to sustaining the high-quality education Riverdale families expect. The proposed levy replaces the expiring levy and adjusts the rate from \$1.37 to \$1.67 per \$1,000 of assessed property value — the first increase since 2015 and an adjustment that remains below the rate of inflation over that time. **This rate reflects careful, strategic planning to uphold Riverdale's high standards while being mindful of the community's investment.**

Local option funds go directly to Riverdale schools and support dedicated teachers, small class sizes, and the academic programs that help students thrive.

Please join the Riverdale School Board in voting **YES on Measure 26-263.**

Chair Mina Stricklin  
Vice Chair Shaina Weinstein  
Ali Lanenga  
Milessa Lowrie  
Michele Rosenbaum  
Student Representative Sy Jones

*(This information furnished by Milessa Lowrie,  
Yes for Riverdale Schools)*

## RIVERDALE SCHOOL DISTRICT MEASURE 26-263

### ARGUMENT IN FAVOR:

#### A Message to Our Dunthorpe Neighbors

As local real estate professionals who work in Dunthorpe every day, we see firsthand what drives demand in our neighborhood. One factor rises above almost all others: **the strength and reputation of the Riverdale School District.**

While not every household in Dunthorpe has school-aged children, **every property owner benefits from the value our schools add to this community.**

In most parts of Multnomah County, home values have faced increased pressure. Yet homes in Dunthorpe continue to be highly sought-after. **Riverdale's reputation attracts buyers from across the Portland metro area and beyond.** For families relocating from out of state, school quality is often the deciding factor. For local move-up buyers, it is frequently the reason they are willing to pay a premium to live within district boundaries. This sustained demand strengthens pricing, supports resale value, and provides stability even during broader market fluctuations.

**The local option levy is a critical part of maintaining that reputation. It helps preserve the instructional quality, staffing levels, and programs that make Riverdale exceptional.** Without it, reductions in teaching positions and instructional days would directly impact the educational experience that underpins our district's standing.

Supporting the levy is not simply about funding schools; it is about protecting one of the most important assets in our neighborhood. **Strong schools help preserve strong property values.** They reinforce the long-term desirability of Dunthorpe. **They signal to the broader market that this is a community committed to excellence and stability.**

As Realtors and neighbors, we believe maintaining that advantage matters. **We encourage you to join us in supporting the Riverdale Local Option Levy.**

Karen Durrett  
Kristen Kohnstamm  
Laura Martin  
Mimi McCaslin  
Carrie Spurlock  
Allison Williams

*(This information furnished by Allison Williams,  
Yes for Riverdale Schools)*

*The above information has not been verified for accuracy by the county.*

*The above information has not been verified for accuracy by the county.*

# SANDY FIRE DISTRICT MEASURE 3-634

## REFERRED TO THE PEOPLE BY THE DISTRICT BOARD

**Caption:** Annexes Sandy Fire District into Clackamas Fire District

**Question:** Shall Sandy Fire District dissolve and be annexed into Clackamas Fire District for fire protection and emergency medical services?

**Summary:** The Sandy Fire Board seeks voter approval to dissolve and annex into Clackamas Fire District, which currently provides all fire and emergency medical services to Sandy-area residents under a temporary contract expiring in June 2030.

Clackamas Fire began providing services to Sandy in 2021, resulting in expanded staffing and equipment at the Sandy and Eagle Creek stations. Annexation maintains firefighters at these stations and establishes permanent, district-level fire and EMS services for residents, replacing a temporary contract. It expands rescue coverage from 12 to 24 hours/day and gives residents the right to vote on the District's Board of Directors and funding measures, such as bonds or levies.

Clackamas Fire serves more than 265,000 residents in communities including Boring, Eagle Creek, and Damascus—all of which voted to permanently join the district.

If approved, property owners will no longer pay Sandy Fire's permanent tax rate of \$2.1775 per \$1,000 of assessed value and will instead pay Clackamas Fire's rate of \$2.4012. For a median assessed property at \$262,390, the difference is estimated at \$4.90 per month.

## EXPLANATORY STATEMENT

Since 2021, Clackamas Fire has been providing emergency fire and medical services to Sandy under a service contract. Thanks to this partnership, residents have received improved emergency services, with Clackamas Fire staffing a three-person engine company 24/7 and a new two-person rescue unit for 12 hours a day, seven days a week at Sandy's main station.

The Sandy Fire District is referring this measure to voters to consider formal annexation into Clackamas Fire District. Annexation would ensure long-term emergency response stability, expand local representation by allowing Sandy voters to elect district board members, and provide access to the same service levels enjoyed by other communities in the district, including Boring, Happy Valley, Damascus, and Oregon City. Clackamas Fire District has an Insurance Services Office (ISO) Class 2 rating, which is higher than Sandy's. Annexation into Clackamas Fire may help some property owners secure more affordable insurance coverage.

If approved, property owners would pay taxes directly to Clackamas Fire for fire and EMS services. Property owners would pay the district's permanent tax rate of \$2.4012 per \$1,000 of assessed value. The cost difference between the Clackamas Fire rate and what residents currently pay for emergency services is about \$0.22 per \$1,000 of assessed value, or approximately \$4.90 per month for the median home assessed at \$262,390. Half of homeowners will pay less than this amount.

In 2023, Clackamas Fire voters approved an enhanced funding levy, at a rate of \$0.52/1000, for emergency response. If annexation is approved, Sandy-area residents would not pay this levy and would have the opportunity to vote on any future funding measures, such as a levy renewal.

Annexation provides a more predictable funding structure instead of a temporary contract. It will make permanent the improvements Clackamas Fire has made. A "yes" vote will maintain existing firefighters in the Sandy community on a permanent basis, expand coverage on the new

The full text of this measure is available online at [www.clackamas.us/elections](http://www.clackamas.us/elections)

rescue from 12 to 24 hours per day and increase staffing at Sandy's main fire station. It will also keep both the Sandy and Firwood Stations open, protect enhanced staffing at nearby Eagle Creek, and preserve and strengthen the volunteer and Explorer programs.

A "yes" vote supports annexation into Clackamas Fire District before July 1, 2026.

A "no" vote would maintain the temporary contract with Clackamas Fire District, which is not sustainable beyond 2030. Should Sandy residents decide not to join Clackamas Fire, options are limited. Clackamas Fire would likely require an updated contract to cover the true cost of enhanced service level standards, including wildfire prevention, emergency response and deployment of light vehicles. This would likely mean additional taxes or cuts to fire and emergency medical services for Sandy residents, one reason both elected district boards support annexation.

**NO ARGUMENTS IN OPPOSITION TO THIS  
MEASURE WERE FILED**

## SANDY FIRE DISTRICT MEASURE 3-634

### ARGUMENT IN FAVOR:

#### FIREFIGHTERS SUPPORT MEASURE 3-634

##### What Is Being Proposed

Sandy Fire District is proposing annexation into Clackamas Fire District to make emergency service improvements permanent and increase the number of firefighters per day.

If approved by voters, Sandy Fire District and Clackamas Fire District would become one District. Since 2021, Clackamas Fire has provided fire and EMS services to the community of Sandy through contracts for service.

##### What Would Change

The most significant service improvement is increased staffing. Currently Clackamas Fire serves the community of Sandy with one fire engine with three firefighters 24-hours a day and a lighter, quick response unit called a rescue, with two firefighters for 12-hours a day.

- Rescue unit coverage would expand from **12 hours per day to 24 hours per day**
- Sandy would have two fully staffed emergency response units available 24/7
- Both units provide fire protection and Advanced Life Support

**This change ensures consistent emergency coverage overnight, when resources are currently limited.**

##### Why This Matters

Sandy is a growing bedroom community for the Clackamas and Portland metro area.

- More than 5,000 Sandy residents commute outside the city for work.
- Population and demand for emergency services increase at night as residents return home.
- Currently, after 7:30 p.m., Sandy relies on a single staffed fire engine with backup responding farther away.

**Emergencies don't stop at night; coverage shouldn't either.**

##### Cost to Residents

- The cost of this service increase is approximately:
  - **\$0.22 per \$1,000 of assessed home value (AV)**
- This modest increase directly supports:
  - **24-hour rescue staffing**
  - Increased emergency response reliability
  - Regional collaboration for fire and EMS services

**Firefighters throughout the metro area and east county support Measure 3-634**

##### Endorsed by:

Gresham Professional Firefighters, Local 1062  
Professional Firefighters of Estacada, Local 1159  
Tualatin Valley Firefighters, Local 1660  
Portland Firefighters Association, Local 43  
Corbett Fire Chief Rick Wunsch  
Sandy Fire Chief Phil Schneider (Retired 2023)

**VOTE YES ON MEASURE 3-634**

*(This information furnished by Nathan Hon, Professional Firefighters of Clackamas County, IAFF Local 1159)*

*The above information has not been verified for accuracy by the county.*

## SANDY FIRE DISTRICT MEASURE 3-634

### ARGUMENT IN FAVOR:

Sandy Residents,

For more than 50 years, from firefighter to Fire Chief, I watched our city grow into a home for many working families. My values mirror those of our community; trust, partnership, and the humility of neighbors who step forward when help is needed most.

When I became Fire Chief of Sandy Fire District, I began planning for the future. It became clear that as Sandy continued to grow, the demand for emergency services would eventually outpace the fire district's ability to respond with the resources available. As call volumes increased and the population expanded, we recognized that continuing to operate independently would limit our ability to provide the level of service our community requires.

Guided by the values of partnership and trust, I looked to a proven neighbor and long-standing response partner. Clackamas Fire District was the clear choice to help meet the evolving needs of our community.

In 2021, Sandy Fire District began working with Clackamas Fire District to strengthen emergency services through shared resources and regional coordination. This partnership reduced operational redundancy, improved efficiency, and enhanced the reliability of emergency response for our residents.

In 2023, Sandy Fire District entered a formal contract for emergency services with Clackamas Fire District. This agreement has allowed both agencies to work together to deliver effective emergency response, proactive community risk reduction, and dependable service for the residents of Sandy Fire District.

Now is the time to make this partnership permanent through annexation.

I stand with our firefighters in supporting a **YES vote on Measure 3-634**. This annexation will ensure reliable emergency services, more firefighters available when emergencies occur, and dependable protection for Sandy families now and into the future.

Sandy Fire Chief Phil Schneider (Retired 2023)

*(This information furnished by Nathan Hon, Professional Firefighters of Clackamas County, IAFF Local 1159)*

*The above information has not been verified for accuracy by the county.*

## SANDY FIRE DISTRICT MEASURE 3-634

### ARGUMENT IN FAVOR:

As elected officials serving Sandy and the surrounding communities, we support the annexation of Sandy Fire District into Clackamas Fire District as a responsible, forward-looking investment in public safety. Since 2021, Clackamas Fire has provided fire protection and emergency medical services to Sandy through contracts for service. This measure builds on that proven partnership and establishes a stable, long-term framework for delivering dependable emergency services.

Under annexation, emergency response capacity will be strengthened through consistent, around-the-clock staffing. Sandy will be served by two fully staffed response units, a three-person fire engine and a two-person rescue unit, both capable of delivering fire suppression and Advanced Life Support medical care. Currently, the rescue unit operates only 12 hours per day. Expanding it to 24-hour coverage ensures reliable service overnight and during early morning hours when emergencies continue to occur, but staffing is reduced.

#### Benefits of Measure 3-634

##### 24/7 Service That Matches Community Needs

- More than 5,000 residents commute daily and return home in the evening.
- The need for emergency services increases at night when families are home.
- Continuous staffing ensures dependable response when the community is most populated.

##### Stronger Emergency Response

- Two staffed units would be available 24/7.
- Statistics show Sandy has a 20% chance for simultaneous emergencies.
- Dual coverage allows responders to manage multiple calls at the same time.

##### Cost-Effective & Efficient

- Approximately \$0.22 per \$1,000 of assessed home value.
- Supports increased staffing and dependable 24/7 service.
- Streamlines administration costs and provides more frontline firefighters.

Annexation enhances local service while providing the stability and capacity needed to meet future demand. It strengthens emergency response, supports firefighter safety, and ensures Sandy remains well protected, day and night.

#### JOIN US IN SUPPORTING MEASURE 3-634

**State Representative Jeff Helfrich - District 52**

**State Representative Matt Bunch - District 51**

**State Representative Lamar Wise - District 48**

**Ben West - Clackamas County Commissioner**

**Paul Savas - Clackamas County Commissioner**

**Martha Schrader - Clackamas County Commissioner**

**Diana Helm - Clackamas County Commissioner**

*(This information furnished by Nathan Hon, Professional Firefighters of Clackamas County, IAFF Local 1159)*

*The above information has not been verified for accuracy by the county.*

## SANDY FIRE DISTRICT MEASURE 3-634

### ARGUMENT IN FAVOR:

We, the elected Directors of Sandy Fire District #72, are advocating a **YES Vote on Measure 3-634** to annex our Fire District into Clackamas Fire District #1.

After evaluating the data, finances, firefighting staffing opportunities, and reviewing all options for our future, all facts point to this annexation being **in the best interests** of our citizens, our businesses, and our Fire District.

A **YES Vote INCREASES the firefighter staffing** at the Sandy main station to **Five Firefighters at all times**, something we were never able to do ourselves.

A **YES Vote adjusts our tax rate** to match Clackamas Fire's permanent tax rate of \$2.4012 per thousand, slightly increasing our taxes for **greatly improved service**.

A **YES Vote provides 8 Firefighters, including Paramedics**, on duty 24 hours a day, between the Sandy Fire Station and the Eagle Creek Fire Station, together serving the Sandy community, as well as numerous other apparatus and personnel that Clackamas Fire can dispatch.

A **YES vote provides us additional services** permanently available including water rescue, wildland firefighting teams, fire prevention & education, hazardous material response, and many other support services available as a larger district.

A **YES Vote provides that enhanced volunteer firefighter staffing continues** at the Dover Fire Station 26+ nights a month vs 4 prior to the partnership with Clackamas Fire.

A **YES vote guarantees** that the Sandy Fire Station will permanently be named the "**Sandy Community Fire Station**".

A **YES vote ensures** that future **funds needed for new apparatus and equipment** will be available.

The Sandy Fire District Board, Clackamas Fire District board, and Administration all believe joining a **successful regional fire district now** secures **faster, more reliable fire and EMS service, expands coverage, protects community identity, and ensures long-term financial sustainability**.

**Please join a Unanimous Sandy Fire District Board!**

**Vote YES on Measure 3-634!**

**Sue Hein Ron Lesowski Mark Maunder Ryan Fox Andrew Brian**  
Directors — Sandy Fire District

*(This information furnished by Sue Hein, Sandy Area Citizens for Better Fire & Emergency Services)*

*The above information has not been verified for accuracy by the county.*

## SANDY FIRE DISTRICT MEASURE 3-634

### ARGUMENT IN FAVOR:

#### Vote YES on M3-634!

As citizens and taxpayers of Sandy Fire District #72, we strongly urge a **YES vote on M3-634** to unite the Sandy FD with Clackamas Fire District #1. For many years, Sandy FD has been proudly providing emergency services to our community. Unfortunately time, employment patterns, increasing costs, and changing demographics have limited the ability of Sandy FD to provide those services adequately and consistently.

As our community has grown, the needs of the community have grown as well. To ensure safety and effective emergency services as we continue to grow, we must join our community with Clackamas Fire District #1. Fire engines that in 2016 cost \$650,000 are now **\$1,300,000**. Our community alone cannot afford to replace equipment we will need in the future.

Sandy Fire District's staffing only allowed a 3 person full time response to a fire and heavily relied on aid arriving from other agencies. Clackamas Fire sends a minimum of 23 firefighters and multiple apparatus. **YES on M3-634** allows operational efficiencies that will allow Clackamas Fire to allocate resources and **Increase the staffing** at the Sandy Fire Station to improve service even further for a nominal increase in taxes to Sandy area residents.

To ensure the best future for our entire Sandy community, we ask you to please join us and Vote **YES on M3-634**.

Salina Horsfall  
Khrys Jones  
Kim Wheeler  
Dawn Syring  
Jessica Clemence  
Bruce Heider  
Gordon Slatford  
Teddy Glemser  
Allison Cobb  
Marjorie Stewart  
Jan Lee  
Theresa Oslund  
Diane Crane  
Guy Gutfleisch  
Bernie Andreotti  
Patrick Bernards

Keegan Deters  
Suzanne Deters  
Tracie Johnson  
Theodore Syring  
Tawnya Stevens  
Julie Stephens  
Eloise Miller  
Chris Bennett  
George Cobb  
Michael Stewart  
Tom Burke  
Michael Weinberg  
James Moen  
Dorothy Gutfleisch  
John Andreotti  
Katharyn Bernards

**Vote YES on M3-634!**

*(This information furnished by Sue Hein,  
Sandy Area Citizens for Better Fire & Emergency Services)*

*The above information has not been verified for accuracy by the county.*

## SANDY FIRE DISTRICT MEASURE 3-634

### ARGUMENT IN FAVOR:

#### Vote YES on Measure 3-634!

Voting **YES on M3-634** will allow the full integration of services of both Clackamas Fire District and Sandy Fire District via an annexation. We, the Directors of Clackamas Fire District feel that this legal integration is to the mutual benefit of **ALL** of our combined residents.

A **YES** vote ensures the **permanent increased staffing** of the Sandy Community Fire Station from 3 firefighters on duty that Sandy Fire previously provided, to **5 firefighters** on duty 24 hours a day, seven days a week. In addition, Clackamas Fire volunteers are now also staffing the Dover Community Fire Station on an average of 26 nights per month. With the addition of 3 firefighters on duty at the Eagle Creek Station that our partnership also provides, a **YES vote** ensures staffing in the Sandy area would be up to **8 Firefighters**, including Paramedics.

This annexation is both economical and improves the efficiency and safety of our combined Districts. Residents of Sandy Fire District would see a small increase in their taxes to **ensure permanent, fiscally sound, reliable, & effective Emergency Services** for the Sandy Community.

Clackamas Fire District has a proven history of efficient, excellent service. **Uniting** with the Sandy Fire District will continue to ensure these services to residents and will **improve** and **increase** staffing, as well as service delivery to areas of **BOTH** districts.

Clackamas Fire District has provided full service to Sandy Fire District residents since 2021 and we thank the Sandy community for your support and we hope to have you join the group of communities that share regional fire protection with each other.

**We support a YES Vote on M3-634 to Welcome Sandy residents to our family!**

**Jim Syring   Chris Hawes   Thomas Joseph   Jay Cross**  
Directors - Clackamas Fire

**Voting YES on M3-634 will make it better for all of us.**

*(This information furnished by Sue Hein,  
Sandy Area Citizens for Better Fire & Emergency Services)*

*The above information has not been verified for accuracy by the county.*

## SANDY FIRE DISTRICT MEASURE 3-634

### ARGUMENT IN FAVOR:

As a Clackamas Fire Volunteer Firefighter, I have seen firsthand how our combined Clackamas - Sandy Volunteer program has **Grown** and **Succeeded** through the **Partnership** created. Our volunteers work diligently to serve the community of Sandy and we have **Benefitted** from the experience and expertise that bringing the 2 volunteer groups together has resulted in. I have also been impressed by the local citizen participation and interest the Sandy community has shown toward our firefighters. This relationship has **Strengthened** the ability to serve the Sandy community while maintaining a **Strong** and **Active** Volunteer program.

One of the most important improvements has been the **Increased Volunteer Staffing** at the Firwood Road Station in the Dover community. Today, the station is staffed by volunteers an average of **26 nights each month**, providing **More Consistent** emergency coverage and **Faster Response** for the community we proudly serve.

This **Partnership** has also **Strengthened** wildfire preparedness. During the fire season, **Additional Daytime Staffing** from the Oregon Dept of Forestry provides **Increased** wildfire protection for our area. This added resource is a direct result of the **Strong Working Relationship** developed with Clackamas Fire.

Our Support and Water Tender Operator Volunteers have also **Benefitted** from this relationship. Their continued participation helps ensure **Reliable Response** that supports our local community when emergencies occur.

The Firwood Road Station provides a **Dedicated** home for the volunteer program. Our volunteers **Take Pride** in the station, maintaining the grounds, and apparatus in excellent condition.

The **Continued Success** of this program depends on the **Support** of the community. Volunteer firefighters are **Honored** to serve our friends and neighbors, and I **Respectfully Request Your Support** to help ensure this program can **Protect Our Community** well into the future.

I **Encourage a YES VOTE on M3-634 to Annex Sandy Fire District into Clackamas Fire** and continue the collaboration permanently, for the benefit of our community.

**Brent Starr**

Clackamas Fire Volunteer Association President

## SANDY FIRE DISTRICT MEASURE 3-634

### ARGUMENT IN FAVOR:

**PLEASE VOTE YES ON M3-634!**

The "**Sandy Area Citizens For Better Fire and Emergency Services**" was formed to advocate a **YES Vote for Measure 3-634** to unite the Sandy Fire District #72 together with Clackamas Fire District #1 to serve the combined residents.

We came together because **Voting YES on M3-634** provides numerous benefits to our Sandy community including guaranteeing and **providing 5 firefighters on duty** at the Sandy Fire Station at all times instead of only 5 during the daytime and 3 at night. A **YES Vote** also provides that we will **continue to have enhanced volunteer firefighter staffing** at the Dover Fire Station **26+ nights per month** vs 4 nights before the partnership.

It also **provides a permanent solution** and a solid baseline to providing fire and emergency services into our future and ensuring that we are remaining efficient, state of the art, and that we have specialized resources responding to our community whenever we need them by sharing those resources with other neighboring communities.

Our Sandy Fire District has been under contract with Clackamas Fire District since 2021. During this time, they have demonstrated their effectiveness of their service model. Not only has it worked, there have been **numerous positive outcomes** including **faster paramedic assistance** at medical calls, vastly increased resources sent to fires in our area, and Clackamas Fire has been overly responsive to the needs in our community. All of us who have enjoyed the **Operation Santa Parade** can appreciate the effort Clackamas Fire has put into becoming a part of the community.

We will always be the awesome **Sandy Community** that we are, and ensuring a stable, higher level of Fire Protection permanently to our community, will ensure a safe and protected future.

Please join us in supporting and voting **YES on Measure 3-634**.

Respectfully,

**Sue Hein**

**Ron Lesowski**

**Chris Hawes**

**Sandy Area Citizens For Better Fire and Emergency Services**

*(This information furnished by Sue Hein,  
Sandy Area Citizens for Better Fire & Emergency Services)*

*The above information has not been verified for accuracy by the county.*


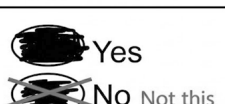
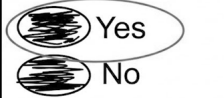
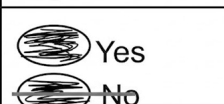



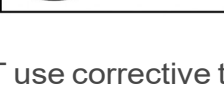
*(This information furnished by Sue Hein,  
Sandy Area Citizens For Better Fire & Emergency Services)*

*The above information has not been verified for accuracy by the county.*

## Did you make a mistake?

Don't tear up your ballot. You can correct the mistake.

Make your choice obvious so election officials can count it correctly. Please review the examples of acceptable corrections.

 Yes  No <i>This one</i>	 Yes  No
 Yes  No <i>Not this</i>	 Yes  No

Please do NOT use corrective tape or white out.

For further assistance, contact Clackamas County Elections at 503-655-8510.

## Returning your ballot by mail?

You can return your ballot by mail. If you choose to return your ballot by mail it *must be postmarked* on or before Election Day, May 19, 2026. Because of USPS changes in how mail is processed, **we recommend returning your ballot directly to an Official Ballot Drop Box after Tuesday, May 12.**

**Twenty-six Official Ballot Drop Sites are open 24/7** in Clackamas County. You may deposit your ballot at any official drop box in the state until 8 pm on Election Day, May 19, 2026.

Find your nearest Official Ballot Drop Site at [clackamas.us/elections](https://clackamas.us/elections).

## Make a Plan to Vote



### Your Vote Counts!

Make sure your voice is heard by voting in the May 19, 2026 Primary Election.

### Make a plan to vote.

- **Do you know where you will receive your ballot?** Is your registration up-to-date?
- **When will you vote?** Ballots are mailed to voters April 29 and are due Election Day, May 19 by 8 p.m.
- **How will you return your ballot?**
  - By Mail** - Must be postmarked by Election Day, May 19. No stamp required. Mail back one week before Election Day.
  - By Official Ballot Drop Box** - Must be deposited by 8 p.m. on Election Day, May 19.

### Don't forget to sign!

Your ballot cannot be counted if you do not sign the return envelope. Every signature is checked against the registration signature on file, and the signature must match for the ballot to be verified and counted.

### Questions?

**Contact Clackamas County Elections**  
503-655-8510 | [elections@clackamas.us](mailto:elections@clackamas.us)  
[clackamas.us/elections](https://clackamas.us/elections)

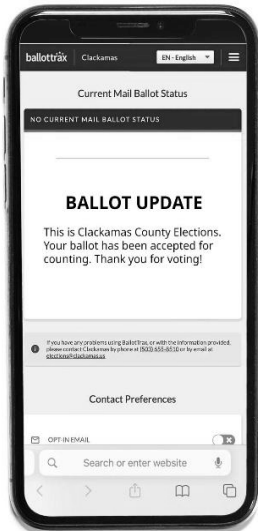
# How Do I Track My Ballot?



**Sign up to Track Your Ballot!** Trust that your vote counts with simple, secure, mail ballot tracking! Know where your ballot is in the voting process from mailed to accepted.

As a Clackamas County voter, you can sign up to receive alerts via text, phone, or email. Know when your ballot is mailed to you. After you vote and return your ballot, be alerted when it has been accepted for counting. Your vote remains anonymous and confidential.

Sign up online for **Track Your Ballot** at [clackamas.us/elections/track-your-ballot](https://clackamas.us/elections/track-your-ballot)  
This service is free for the voter.



**Clackamas County Elections**  
503-655-8510 | [elections@clackamas.us](mailto:elections@clackamas.us)  
[clackamas.us/elections](https://clackamas.us/elections)

# Trusted Information



Find accurate and trusted information from Clackamas County Elections.

Visit [clackamas.us/elections](https://clackamas.us/elections) for:

- voter information,
- Track Your Ballot,
- Official Ballot Drop Sites,
- voter assistance,
- election results and returns,
- and other election data.

## Extended Office Hours

Clackamas County Elections will have extended hours for your convenience.

### Voter Registration and Party Choice Deadline

April 28, 2026  
8:30 a.m. - 7 p.m.

### Saturday Hours

May 16, 2026  
10 a.m. - 2 p.m.

### Election Day

May 19, 2026  
7 a.m. - 8 p.m.

### Clackamas County Elections

503-655-8510 |  
[elections@clackamas.us](mailto:elections@clackamas.us)  
[clackamas.us/elections](https://clackamas.us/elections)

# Oregon Voter Registration Form

## Qualifications

Are you a citizen of the United States of America?  yes  no

Are you at least 16 years of age?  yes  no

**!** If you mark no in response to either of these questions, do not complete this form.

## Personal Information *\*required information*

last name\* first\* middle

Oregon residence address, city and zip code (include apt. or space number)\*

date of birth (month/day/year)\* county of residence

phone email

mailing address, including city, state and zip code (required if different than residence)

## Oregon Driver License/ID number

Provide a valid **Oregon Driver License, Permit or ID:**

I do not have a valid **Oregon Driver License/Permit/ID**. The last 4 digits of my Social Security Number (SSN) are:

x x x - x x -

I do not have a valid Oregon Driver License/Permit/ID or a SSN. I have attached a copy of **acceptable identification**.

## Political Party

Not a member of a party

Constitution

Democratic

Independent

Libertarian

No Labels

Pacific Green

Progressive

Republican

Working Families

Other \_\_\_\_\_

## Signature *I swear or affirm that I am qualified to be an elector and I have told the truth on this registration.*

sign here \_\_\_\_\_ date today \_\_\_\_\_

**!** If you sign this card and know it to be false, you can be fined up to \$125,000 and/or imprisoned for up to 5 years.

## Registration Updates *Complete this section if you are updating your information.*

previous registration name previous county and state

home address on previous registration date of birth (month/day/year)