

PROBLEM STATEMENT

- **Frequent flooding of Arista Road, Trolley Trail, and adjacent residential and commercial parking lots**
- **A lack of flow capacity between Roethe and Boardman Roads due to sediment accumulation**
- **Active beaver dams that increase flood risk**
- **Project focused on area between Naef Road and Boardman Road, including Arista**
- **Objective is to identify potential solutions to reduce the flooding frequency**

FLOOD REDUCTION OPTIONS

- **OPTION #1: BEAVER DAM MANAGEMENT**
- **OPTION #2: EXPAND FLOODPLAIN AND ENHANCE WETLAND FUNCTION**
- **OPTION #3: SEDIMENT MANAGEMENT / CHANNEL DREDGING**
- **OPTION #4: CROSSING MANAGEMENT / IMPROVEMENTS**
- **OPTION #5: STORM FLOW DIVERSION**

EXAMPLE FLOOD REDUCTION ALTERNATIVES

ALTERNATIVE A

- **High Flow Bypass (Option #5)**

ALTERNATIVE B

- **Manage Beaver Dam Heights (Option #1)**
- **Increase Flood Storage (Option #2)**
- **Sediment Accumulation at Roethe Rd (Option #4)**

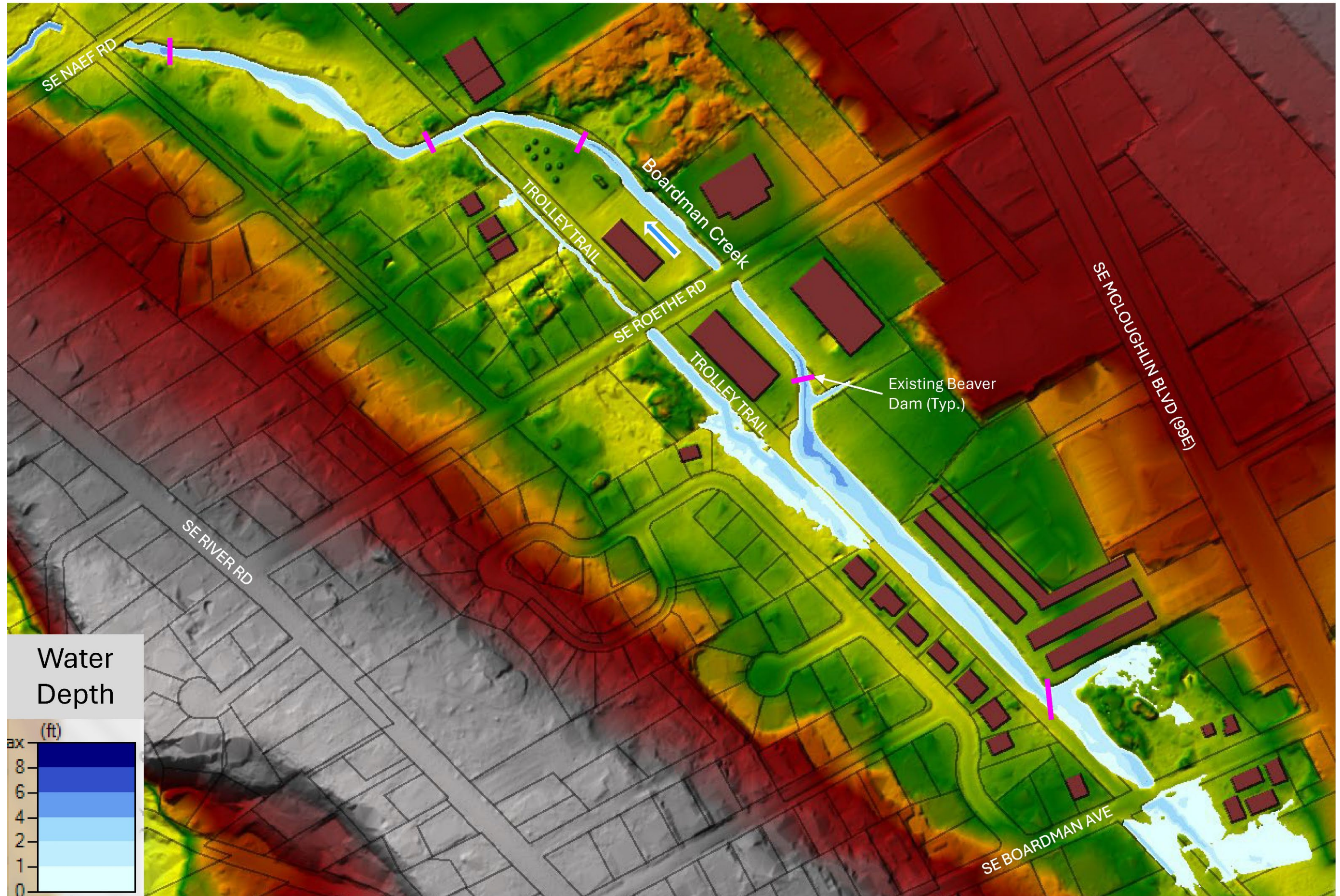
ALTERNATIVE C

- **Manage Beaver Dam Heights (Option #1)**
- **Remove Sediment from Channel (Option #3)**
- **Sediment Accumulation at Roethe Rd (Option #4)**

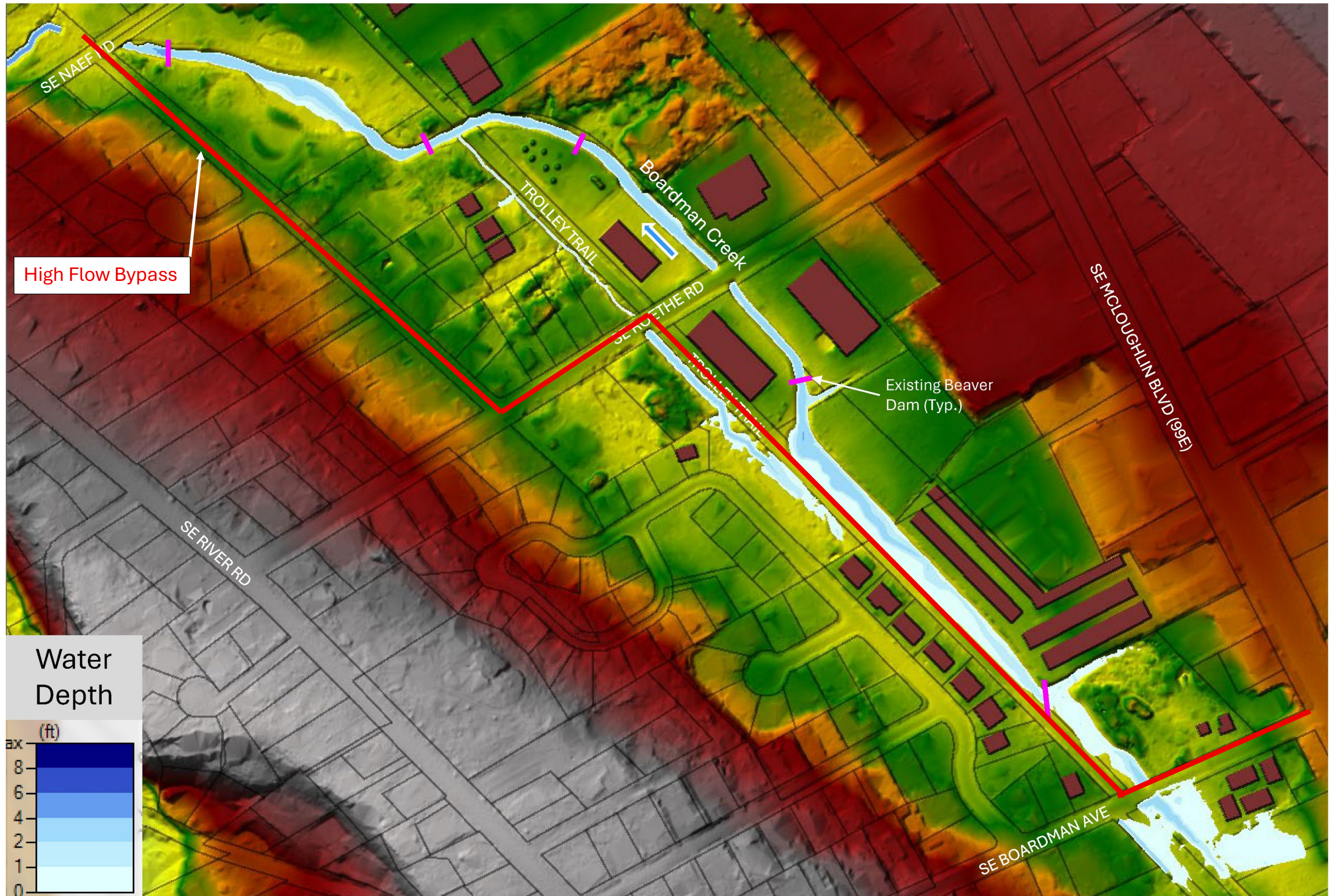
ALTERNATIVE D

- **Manage Beaver Dam Heights (Option #1)**
- **Remove Sediment from Channel (Option #3)**
- **Remove Sediment at Roethe Rd Culvert and Modify Boardman Rd Culvert (Option #4)**

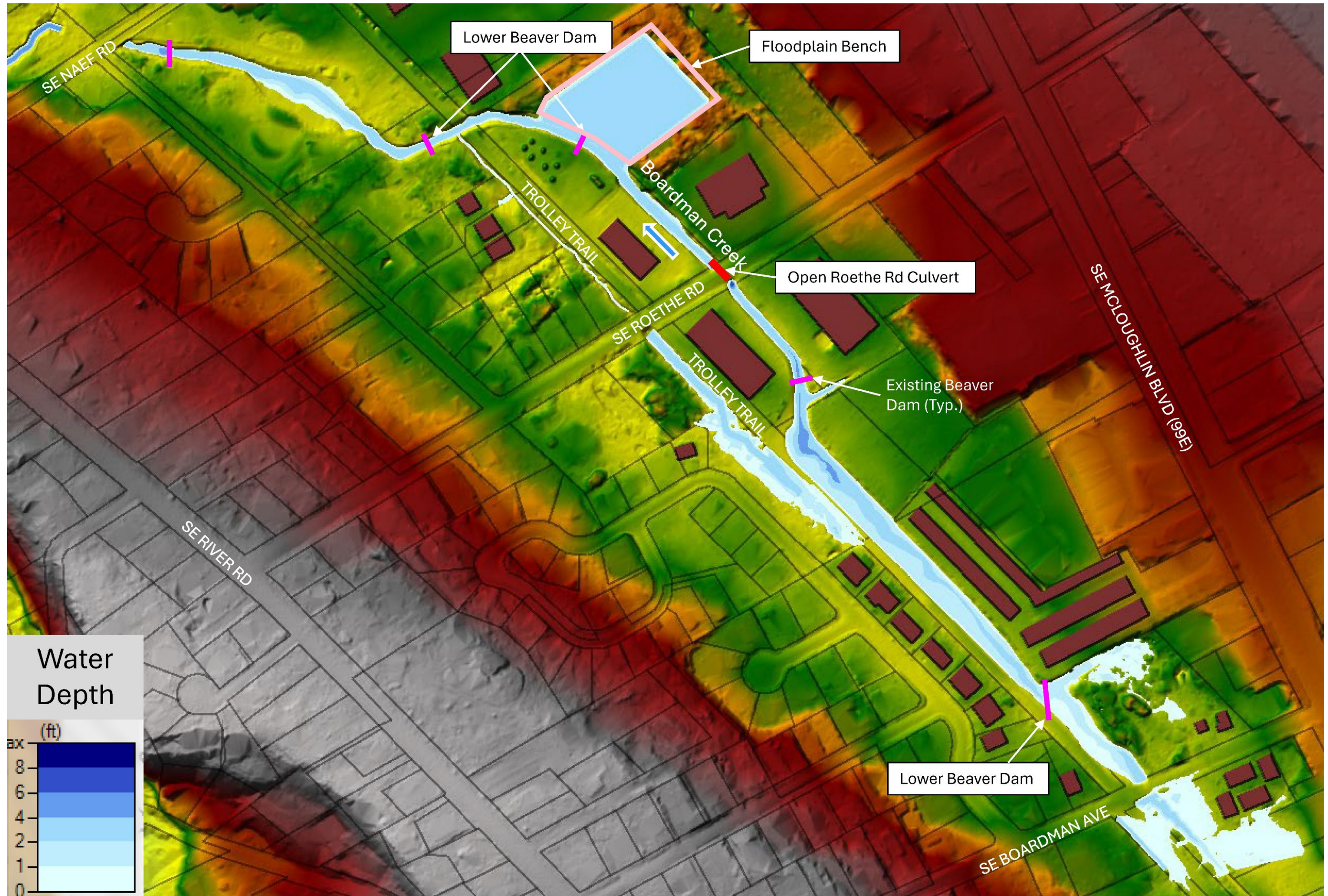
1-Year Rain Event Existing Conditions



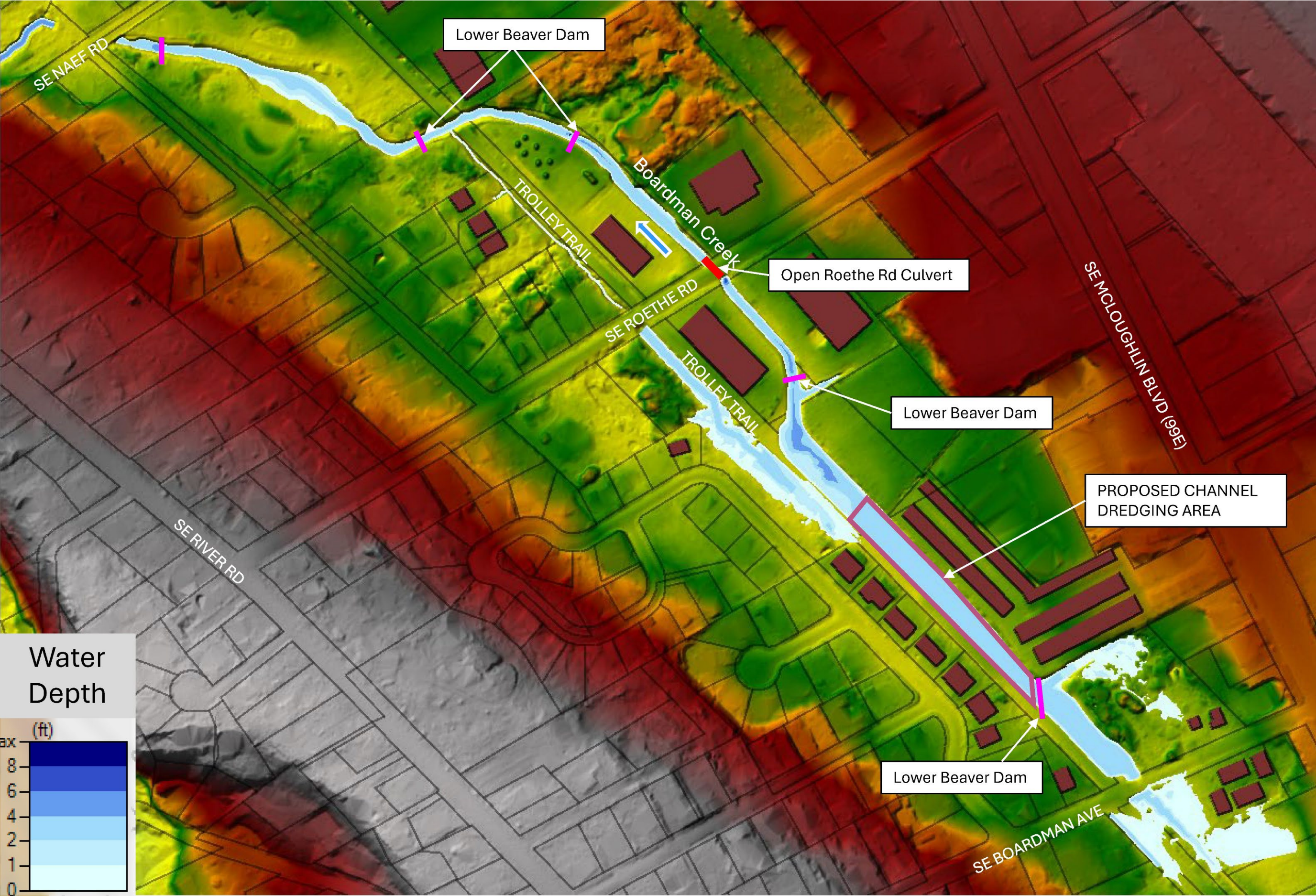
1-Year Rain Event Alternative A



1-Year Rain Event Alternative B



1-Year Rain Event Alternative C



1-Year Rain Event Alternative D

