



*CLACKAMAS COUNTY*  
**SHERIFF**



**2025-2027**  
**BIENNIAL PLAN**



# TABLE OF CONTENTS

Vision, Mission, and Values	3
Biennial Plan Cover Sheet	4
Local Public Safety Coordinating Council (LPSCC) Support	5
Organizational Overview	6
Organizational Chart	7
Parole and Probation Division Overview	9
Gender Responsive Supervision	9
Multi-Disciplinary Teams	10
Impact Court & Drug Enforcement Misdemeanors	10
Victim Services	11
Transitional Services Overview	11
Community Service	12
Program Descriptions	13
Budget Summary	24



# CLACKAMAS COUNTY SHERIFF

## VISION

*Conserving safety in our communities through responsiveness, partnerships, and innovation.*

## MISSION

*The mission of the Clackamas County Sheriff's Office is to provide public safety services to the people of Clackamas County so they can experience a safe and secure community.*

## VALUES

*Courage • Dedication • Integrity • Professionalism • Respect*

*A Tradition of Service Since 1845*



# Clackamas County

## 2025-2027 Community Corrections Biennial Plan

Department of Corrections 3723 Fairview Industrial Drive SE Salem, Oregon 97310	<i>For Office Use Only</i>  Date Received:
Address: 1024 Main Street, Oregon City, OR 97045 Phone: 503-655-8603      Fax: 503-650-8942	
Community Corrections Director/Manager: Captain Chris Chandler Address: 1024 Main Street, Oregon City, OR 97045 Phone: 503-55-825      Fax: 503-655-8942      Email: cchandler@clackamas.us	
Sheriff: Angela Brandenburg Address: 2223 Kaen Road, Oregon City, OR 97045 Phone: 503-785-5000      Fax: 503-785-5190      Email: Angiebran@clackamas.us	
Jail Manager: Jennifer Freeman Address: 2203 Kaen Road, Oregon City, OR 97045 Phone: 503-722-6631      Fax: 503-785-5190      Email: Jenniferfre@clackamas.us	
Supervisory Authority: Sheriff Angela Brandenburg Address: 2223 Kaen Road, Oregon City, OR 97045 Phone: 503-785-5000      Fax: 503-785-5190      Email: Angiebran@clackamas.us Supervisory Authority: Address: Phone:      Fax:      Email:	
LPSCC Contact: Captain Chris Chandler Address: 1024 Main Street, Oregon City, OR 97045 Phone: 503-655-8725      Fax: 503-650-8942      Email: cchandler@clackams.us	
<b><u>Biennial Budget</u></b>	
State Grant-in-Aid Fund:	\$18,909,837
DOC M57 Supplemental Fund:	\$960,097
CJC Justice Reinvestment Grant:	\$2,694,796
Family Sentencing Alternative Program	
Transitional Funds	\$70,156
CJC Treatment Court Grant:	
County General Fund:	\$12,847,414
Supervision Fees:	
Biennial Carryover (GIA, M57, FSAP):	\$861,860.30
Other Fees:	
Other State or Federal Grant:	
Other:	\$1,280,751
<b><u>Total:</u></b>	<b>\$37,838,214.30</b>





# ORGANIZATIONAL OVERVIEW

---

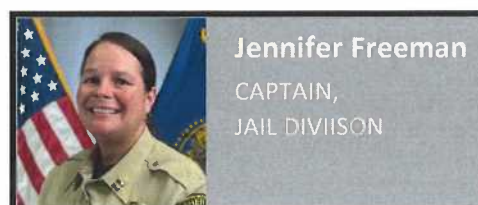
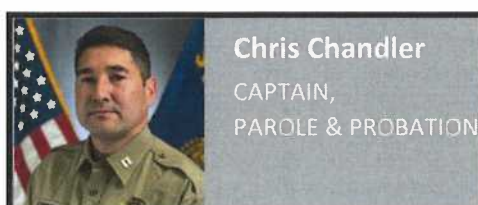
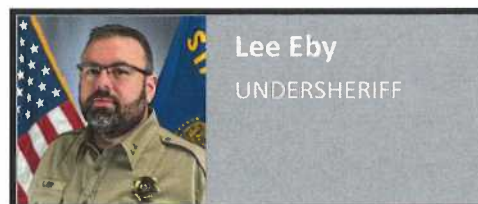
The Clackamas County Sheriff's Office employs over 550 full-time staff and serves about 423,000 residents across 1,879 square miles, including Mt. Hood, the second most climbed mountain in the world.

Sheriff's Office divisions include A Safe Place Family Justice Center, Civil, Finance, Investigations, Jail, Operational Support, Parole and Probation, Patrol, Public Safety Training Center, and Training & Wellness. The office also provides contracted police services to Wilsonville, Happy Valley, and Estacada.

Since 2022, Clackamas County has consistently ranked as the safest metro county in Oregon, according to Oregon State Police Uniform Crime Reporting data. This ranking highlights a strong collaboration among law enforcement, public safety partners, and community organizations.

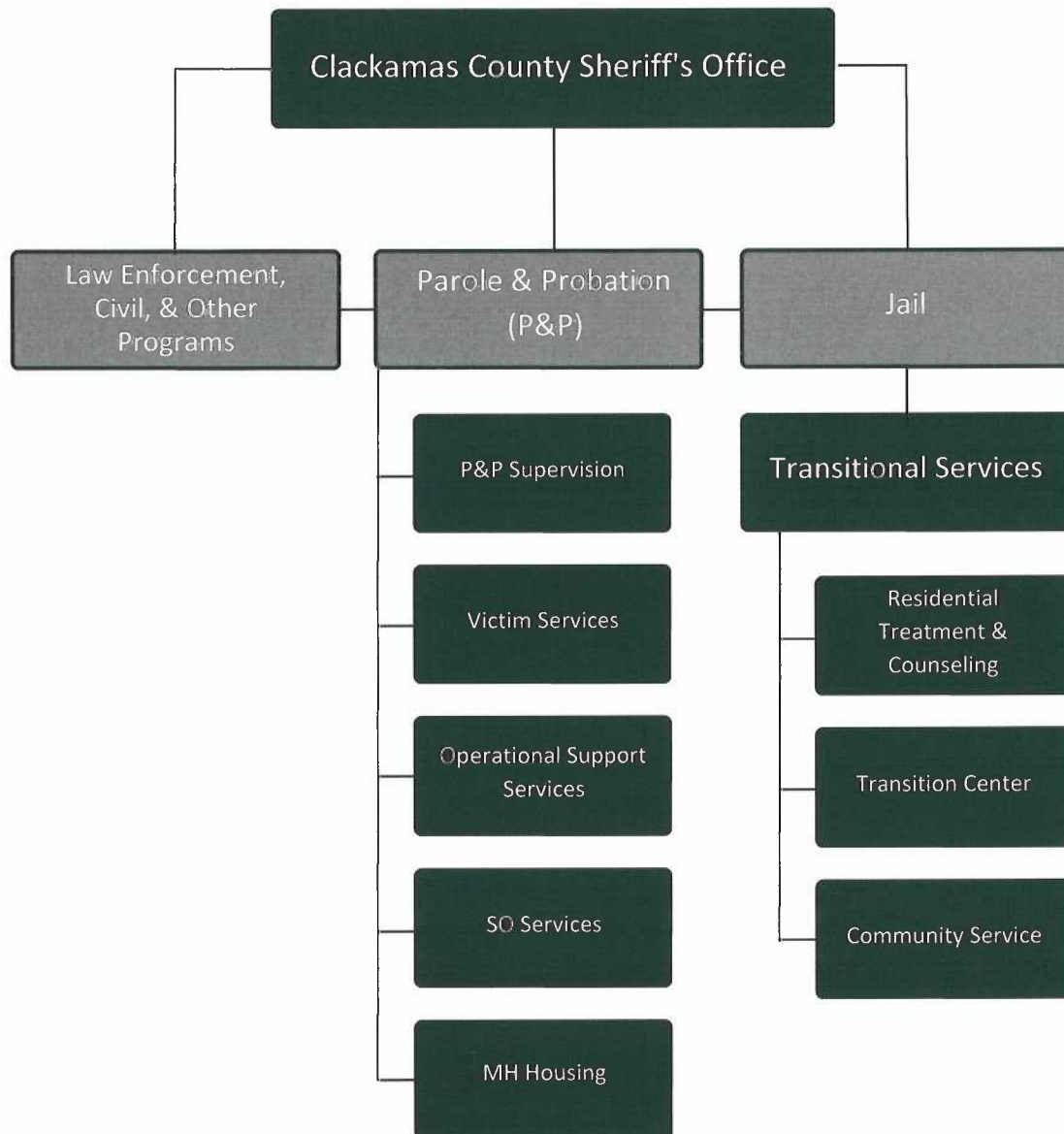
In 2025, leadership transitions led to the promotion of Captain Chris Chandler to oversee Parole and Probation and the promotion of Captain Jennifer Freeman to oversee the Jail Division, including Transitional Services. Their leadership is overseen by Sheriff Angela Brandenburg, Undersheriff Lee Eby, and Undersheriff Brad O'Neil, who provide overall direction and support.

## LEADERSHIP





# ORGANIZATIONAL CHART





# PAROLE AND PROBATION DIVISION



**Justice, Accountability, &  
Reintegration**





# PAROLE AND PROBATION OVERVIEW

---

Parole and Probation is a Division of the Sheriff's Office in Clackamas County, with personnel that include certified Parole and Probation Officers and managers, office specialists, analysts, and other administrative professionals. Additional staff are assigned to Transitional Services in support of programs designed to provide a myriad of services to adults on supervision.

The Clackamas County Parole and Probation Division provides community supervision and case monitoring for more than 2,000 individuals. Caseloads are primarily organized by crime type—such as general (person, property, and drug-related offenses), domestic violence, and sexual offenses—or by responsivity factors, including gender-specific and mental health-focused supervision.

To meet statutory supervision requirements and promote public safety, the division uses validated risk and needs assessment tools to evaluate an individual's likelihood of reoffending. These assessments inform supervision strategies, guide resource allocation, and shape interventions aimed at reducing risk.

Aligned with evidence-based practices supported by the Oregon Department of Corrections, Parole and Probation Officers are trained in risk assessment, behavior change planning, and the use of cognitive-behavioral interventions. These tools are incorporated alongside referrals to community-based services to address criminogenic needs and support long-term success.

---

## GENDER RESPONSIVE SUPERVISION

---

**Gender-responsive practices improve supervision outcomes, making an impact on both justice-involved women and their families.**

Clackamas County's Parole & Probation Division utilizes gender-responsive strategies to address the unique needs of justice-involved women, many of whom experience trauma, substance use disorder, mental health issues, and caregiving responsibilities. Traditional methods may overlook some of these factors, so Clackamas County has implemented key practices to include:

- **Trauma-Informed Supervision:** Special attention is paid to foster safe, supportive environments and prevent re-traumatization
- **Gender responsive referrals:** POs refer individuals to service providers capable of providing gender-specific treatment, like the Clackamas Substance Abuse Program (CSAP)
- **Client engagement events:** Justice-involved women are invited to gather and participate in social events facilitated by P&P staff, centered around relationship building and strengthening support
- **Specialized Case Management:** Individual supervision plans based on the Women's Risk Needs Assessment (WRNA)
- **Gender specific interventions:** Combines trauma-informed care, cognitive-behavioral strategies, and personalized support to reduce recidivism and promote stability

---

## MULTI-DISCIPLINARY TEAMS

---

**Collaboration with community-based organizations and public safety partners is vital to the success of Parole and Probation (P&P), which seeks to balance reformation and accountability for individuals under supervision.**

The P&P Division plays a central role in supporting programs designed to enhance supervision for individuals with unique barriers to success, including the **Mental Health Court**, **Drug Court**, and the division's **Mobile Stabilization Outreach Unit (MSOU)**. Parole and Probation Officers work with Clackamas County Health Centers, the Circuit Court, prosecutors and defense attorneys to seek the best possible outcomes for treatment court participants. Established in 2023, MSOU continues to serve individuals with housing and transportation barriers, by bringing resources and interventions out to the community, leveraging partnerships with city libraries to create a welcoming space to connect with participants. In 2024, MSOU served a total of 144 individuals.

The P&P Division also works with multiple law enforcement agencies as well as professionals from the Department of Human Services (DHS) and behavioral health staff on a variety of multi-disciplinary teams that include the **Threat Assessment Team** which identifies and intervenes on individuals posing high threats of lethality, the domestic violence (DV) focused **High-Risk Response Team** which aims to increase the safety of DV victims both pre- and post-adjudication, the **Inter-Agency Task Force**, which focuses on major weapons and narcotics trafficking, and finally **Human Trafficking** operations designed to hold traffickers accountable and create pathways to recovery for victims.

---

## IMPACT COURT & DRUG ENFORCEMENT MISDEMEANORS

---

**A collaborative effort to rapidly provide services and interventions for the drug-affected**

House Bill 4002 (2024) created new requirements and opportunities for local criminal justice systems to take a different approach to working with individuals whose justice-involvement is due solely to substance use. As a result, Clackamas County established the Impact Court program, designed to support individuals who qualify for deflection (referral to treatment and other services without a formal filing of charges by the District Attorney's office), as well as providing oversight of Conditional Discharge cases; a deferral of sentencing that requires participation in the program.

The Clackamas County Parole and Probation (P&P) Division has supported this new approach through coordination with program navigators and providing supervision of Impact Court participants.

Whether individuals are granted a conditional discharge or are sentenced to formal probation, the P&P Division provides a continuum of services, sanctions, and supervision for these drug-related case in collaboration with the District Attorney's office and Circuit Court.

In the event of revocation and imposition of a jail sentence, HB 4002 provides additional opportunities for individuals to released back to the community and re-engage with treatment providers. CCSO is committed to working with all our community partners in an effort to reach the best possible outcomes for this population.

---

## VICTIM SERVICES

---

### **Providing post-conviction support and advocacy for victims of crime**

The Clackamas County Sheriff's and District Attorney's Offices provides services for victims of crime during criminal investigations and throughout subsequent court proceedings. The Parole and Probation Victim Services program provides these services post-conviction, working alongside Parole and Probation staff to honor victims' rights; informing and empowering victims of crime while their offender serves a term of community supervision. In 2024, the program served 644 victims of crime. With an average of 3 contacts per victim, the program made almost 2,000 contacts during this period.

Clackamas County is one of the few counties in Oregon that dedicates resources to embed a victim services coordinator within their Parole and Probation agency and perform outreach to victims post-conviction. The Victim Services Program at the P&P Division strives to inform victims of their legal rights and decision making that occurs throughout the course of supervision. Our program coordinator also seeks to empower individuals, amplifying their voice to be heard in violation hearings and other proceedings, to ensure their experience and perspective is included at critical decision making points.

The program coordinator assists with the development of safety plans and works with the Clackamas County Family Justice Center to connect victims with critical resources when they are most needed. They work alongside parole and probation staff when decisions or actions impact the victim, providing notification for victims when cases become eligible for earned discharge (early termination of supervision) or conversion from formal to bench (unsupervised) probation. In 2024, the program made 147 of these notifications.

---

## TRANSITIONAL SERVICES

---

**Transitional Services - which encompasses Residential Treatment and Counseling, The Pre-Treatment Jail Program, and the Transition Center - are key components of a system-wide strategy for community safety in Clackamas County.**

**The Pre-Treatment Jail Program** operates within the Clackamas County Jail, in a dorm setting unique from every other living space in the facility. Staff assigned to this jail program assess participants, facilitate cognitive-behavioral groups, make recommendations for sentencing on prison-eligible cases, and create individualized transition plans for appropriate clients.

**Residential Treatment and Counseling** is centered around a substance abuse program with over 25 years of success known as the Clackamas Substance Abuse Program (CSAP). Housed in a 80 bed-facility in Milwaukie, Oregon, CSAP is one of the only residential treatment programs in the county and is designed to serve both men and women. While each population receives gender-specific services, all CSAP participants receive individual and group counseling, low-barrier access to medical care and medication-assisted treatment (MAT), as well as housing and employment resources as they prepare to transition out of the program.



**PICTURED ABOVE:** The Pre-Treatment Jail Program dorm where male participants reside and engage in programming.



**The Transition Center (TC)** is located adjacent to the Clackamas County Jail, an ideal location for individuals releasing from custody in need of a host of services including assessment and referrals for resources in the community. TC staff also support individuals incarcerated at Clackamas County Jail, conducting reach-in meetings and expediting structured sanctions.

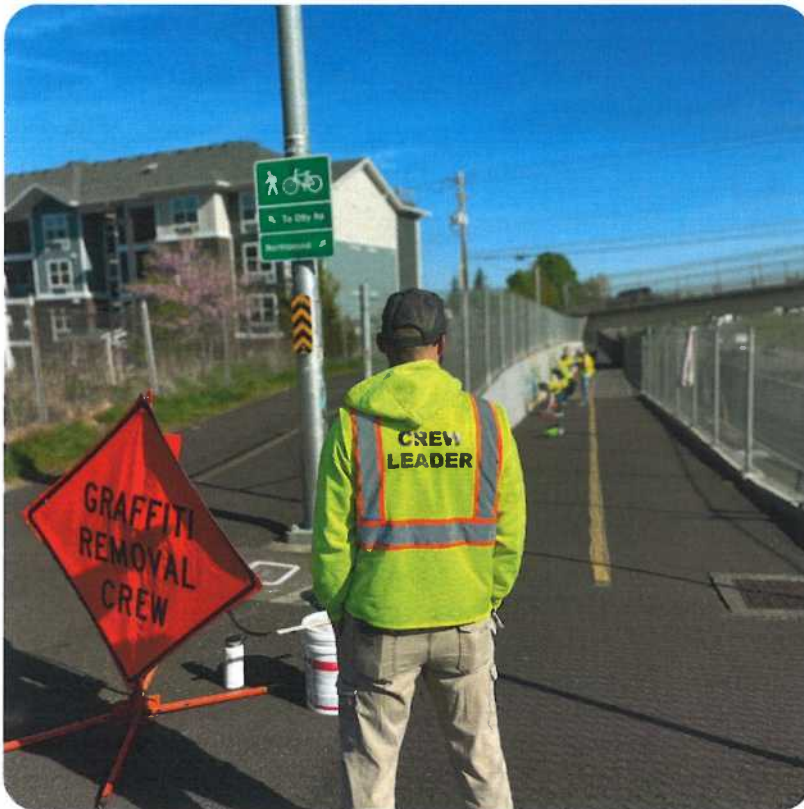
Justice-involved individuals are held accountable in Clackamas County, while also being afforded multiple opportunities to engage in services designed to aid in their success at every stage: pre-sentencing, in custody, immediately upon release, and throughout the course of supervision.

---

## COMMUNITY SERVICE

---

**The Clackamas County Community Service program** provides a safe, pro-social sentencing alternative to justice-involved individuals so they can be held accountable for their offense while contributing to and remaining in their community, and provide a cost-effective workforce to our community partners.



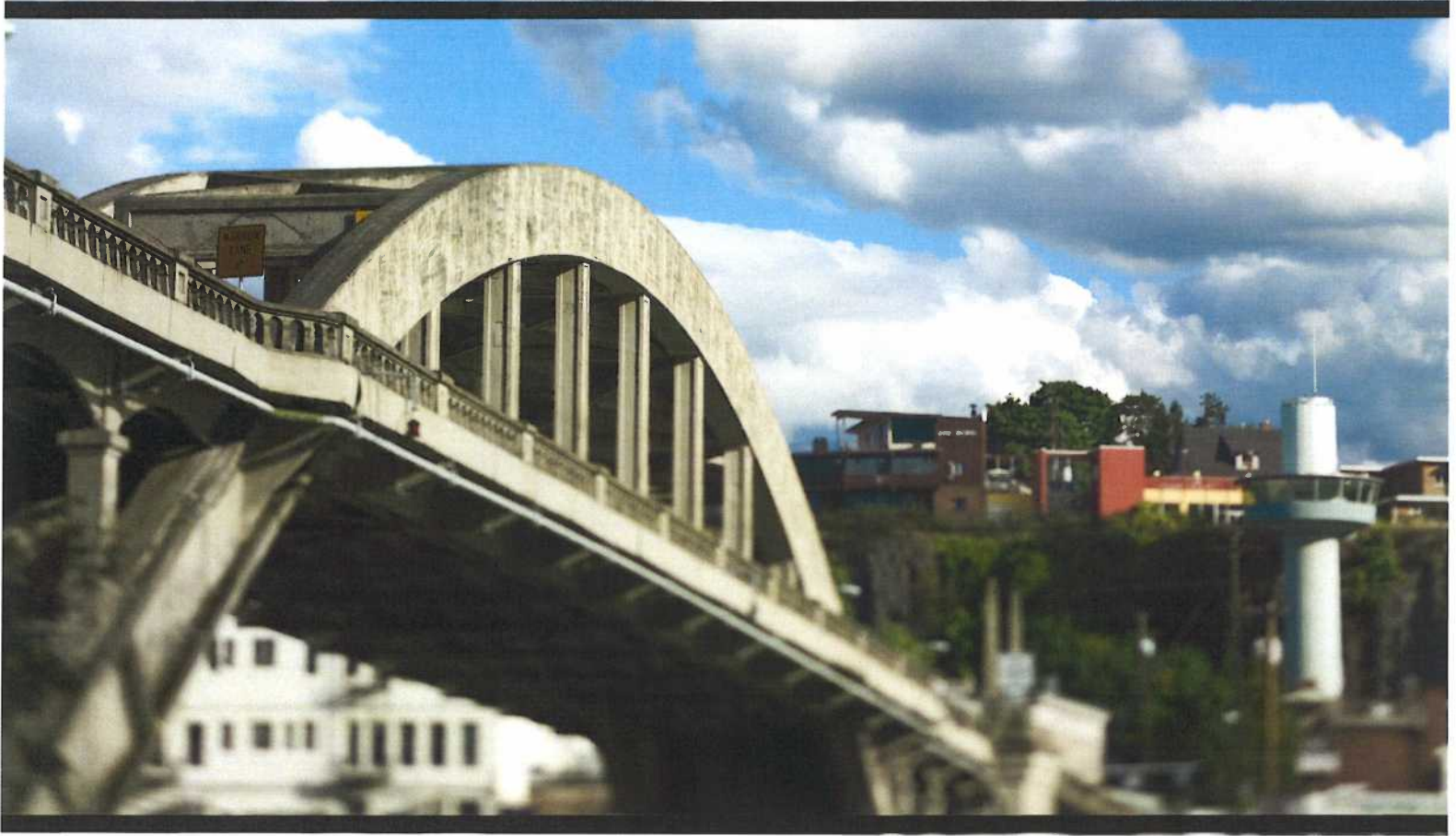
The Community Service program provides the following:

- Pro-social work crews running 7 days a week to provide general landscaping, site beautification, and graffiti removal
- Tracking and verification of CS hours completed for the supervisory authority
- Referrals to and from partnering counties and states
- Verification and collaboration with non-profit organizations to provide alternatives to work crew
- Revenue generation (through contracts, not fees)





# PROGRAM DESCRIPTIONS



**Justice,  
Accountability, &  
Reintegration**

Program Name:	Parole and Probation Supervision
Program Description:	<p>The purpose of the Parole and Probation Supervision program is to provide supervision, sanctions, and services to adults on supervision so they can successfully complete their term of community supervision with a reduced risk to reoffend</p> <p>Supervision includes responsive assessment, case management, and case planning in adherence to OAR 291-078.</p> <p>Sanctions are provided as swift, certain, and proportional responses to violations of supervision conditions. This includes, but is not limited to cognitive behavioral interventions, jail sanctions, community service and other non-custodial sanctions.</p> <p>Services include referrals to community based services and treatment providers, employment support, and release planning with basic resources for individuals releasing from DOC institutions on post-prison supervision.</p>
Program Category:	Supervision
Program Objectives:	<p>Increase the number of individuals on supervision who do not return to supervision within 12 months following the end of supervision.</p> <p>Increase the number of individuals who do not return to supervision within 12 months following the end of supervision for person crimes.</p> <p>Increase the number of individuals who do not return to supervision within 12 months following the end of supervision for property crimes.</p> <p>Increase in individuals with Substance Use Disorder who complete substance abuse treatment by the end of supervision.</p> <p>Increase in the number of individuals with mental health needs who are provided mental health services.</p> <p>Increase in the number of victims due restitution who receive it.</p> <p>Increase in individuals who live in stable housing by the end of supervision.</p> <p>Increase in individuals who gain full-time employment by the end of supervision.</p>
Method(s) of Evaluation:	<p>Clackamas County will collect data and report annually on conformance with Oregon Administrative Rules as they pertain to community case management.</p> <p>Audit and Supervisor Review</p> <p>Monthly and annual statistics</p>

Monthly Average to be Served: 2200

Type of Offender(s) Served:

- ☒ Probation  
☒ Parole/Post-Prison  
☐ Local Control

Crime Category:

- ☒ Felony  
☒ Misdemeanor

Gender:

- ☒ Male  
☒ Female

Risk Level:

- ☒ High  
☒ Medium  
☒ Low

Which Treatment Provider(s) Will You Use Within This Program?

Provider Name	Treatment Type (ie., Anger Management, Cognitive, DV, Dual Diagnosis, Sex Offender, Inpatient Substance Abuse, or Outpatient Substance Abuse)	What, if any, state dollars are budgeted to the program and how much to each fund? (ie., GIA-\$25,000; M57-\$5000)

Funding Sources

- ☒ State Grant-In-Aid Fund

\$11,428,733.31

Revised: 9/16/2025

<input type="checkbox"/> DOC M57 Supplemental Fund	
<input checked="" type="checkbox"/> CJC Justice Reinvestment Grant	\$232,665.43
<input type="checkbox"/> CJC Treatment Court Grant	
<input checked="" type="checkbox"/> County General Fund	\$6,783,236.21
<input type="checkbox"/> Supervision Fees	
<input type="checkbox"/> Biennial Carryover (GIA, M57, FSAPP)	
<input checked="" type="checkbox"/> Other Fees (revenue)	
<input type="checkbox"/> Other State or Federal Grant	
Other: Please Identify	
<input checked="" type="checkbox"/> Transitional Funds	\$70,156
<input checked="" type="checkbox"/> SVDO	\$16,000
<input type="checkbox"/>	

Additional Comments: Clackamas County Parole and Probation has applied for the Criminal Justice Commission's Competitive Justice Reinvestment Program Grant and anticipates receiving an award to fund a Downward Departure Program to provide a higher level of supervision for non-violent high risk downward departure probation cases.

Transition funds are used to meet basic needs for individuals on post-prison supervision within the first 6-months of their release from DOC.

Program Name:	Victim Services
Program Description:	The purpose of the Victim Services Program is to provide outreach, support, safety planning, advocacy and victim notification services to survivors and victims of crime.
Program Category:	Other Programs and Services
Program Objectives:	<p>Victims are provided with information on available resources and guidance to access them.</p> <p>Domestic violence victims who need domestic violence resources due to intimate partner violence, stalking, or sexual assault are referred to the Family Justice Center.</p> <p>Provide safety planning with victims who request modification to any no-contact order.</p>
Method(s) of Evaluation:	Supervisor Review

Monthly Average to be Served: 60

Type of Offender(s) Served:

- ☐ Probation  
☐ Parole/Post-Prison  
☐ Local Control

Crime Category:

- ☐ Felony  
☐ Misdemeanor

Gender:

- ☒ Male  
☒ Female

Risk Level:

- ☐ High  
☐ Medium  
☐ Low

Which Treatment Provider(s) Will You Use Within This Program?

Provider Name	Treatment Type <small>(ie., Anger Management, Cognitive, DV, Dual Diagnosis, Sex Offender, Inpatient Substance Abuse, or Outpatient Substance Abuse)</small>	What, if any, state dollars are budgeted to the program and how much to each fund? <small>(ie., GIA-\$25,000; M57-\$5000)</small>

Funding Sources

- |   |              |
|---|--------------|
| <input type="checkbox"/> State Grant-In-Aid Fund              | _____        |
| <input type="checkbox"/> DOC M57 Supplemental Fund            | _____        |
| <input type="checkbox"/> CJC Justice Reinvestment Grant       | _____        |
| <input type="checkbox"/> CJC Treatment Court Grant            | _____        |
| <input checked="" type="checkbox"/> County General Fund       | \$412,705.29 |
| <input type="checkbox"/> Supervision Fees                     | _____        |
| <input type="checkbox"/> Biennial Carryover (GIA, M57, FSAPP) | _____        |
| <input type="checkbox"/> Other Fees (revenue)                 | _____        |
| <input type="checkbox"/> Other State or Federal Grant         | _____        |
| Other: Please Identify  | _____        |
| <input type="checkbox"/>                                      | _____        |
| <input type="checkbox"/>                                      | _____        |
| <input type="checkbox"/>                                      | _____        |

Additional Comments:



Program Name:	Parole and Probation: Operational Support Services (OSS)
Program Description:	The purpose of the OSS program is to provide logistical support for Parole and Probation services in the form of developing and processing case files so the unit can function efficiently while meeting local and state guidelines.
Program Category:	Other Programs and Services
Program Objectives:	Appropriately and accurately assign clients for services. Increase accuracy of data entry on all client/case information.
Method(s) of Evaluation:	Regular review of organizational performance and statistics collected locally and by the Department of Corrections (DOC).

Monthly Average to be Served: 200     
 Type of Offender(s) Served:     
 Crime Category:     
 Gender:     
 Risk Level:

☒ Probation     
☒ Felony     
☒ Male     
☒ High

☒ Parole/Post-Prison     
☒ Misdemeanor     
☒ Female     
☒ Medium

☐ Local Control     
   
☒ Low

Which Treatment Provider(s) Will You Use Within This Program?

Provider Name	Treatment Type <small>(ie., Anger Management, Cognitive, DV, Dual Diagnosis, Sex Offender, Inpatient Substance Abuse, or Outpatient Substance Abuse)</small>	What, if any, state dollars are budgeted to the program and how much to each fund? <small>(ie., GIA-\$25,000; M57-\$5000)</small>

Funding Sources

<input checked="" type="checkbox"/> State Grant-In-Aid Fund	\$1,995,642.75
<input type="checkbox"/> DOC M57 Supplemental Fund	_____
<input checked="" type="checkbox"/> CJC Justice Reinvestment Grant	\$56,588.95
<input type="checkbox"/> CJC Treatment Court Grant	_____
<input checked="" type="checkbox"/> County General Fund	\$739,702.59
<input type="checkbox"/> Supervision Fees	_____
<input type="checkbox"/> Biennial Carryover (GIA, M57, FSAPP)	_____
<input type="checkbox"/> Other Fees (revenue)	_____
<input type="checkbox"/> Other State or Federal Grant	_____
Other: Please Identify	
<input type="checkbox"/>	_____
<input type="checkbox"/>	_____
<input type="checkbox"/>	_____

Additional Comments: OSS staff also support coordination of the Local Public Safety Coordinating Council and related Clackamas County Justive Reinvestment Program oversight.

Program Name:	Parole and Probation: Sex Offender Services
Program Description:	<p>The purpose of the Sex Offender Services Program is to provide contracted sex offender treatment, interventions, and polygraphs for individuals on supervision for a sexual offense so they can be properly assessed and receive a variety of services designed to reduce the risk of sexual offending in the community. Programming includes:</p> <p>Cognitive-based treatment groups designed to address the relationship between thoughts and actions in order to improve outcomes.</p> <p>Individualized assessment and evaluation to determine the length and type of programming which may include an intervention group for non-paraphilic offenders, individual counseling, biofeedback, arousal reconditioning therapy and an aftercare group.</p> <p>All contracted treatment providers are certified by the Oregon State Sexual Offense Treatment Board.</p>
Program Category:	Behavioral Health Tx Services - Sex Offender Tx
Program Objectives:	<p>All sex offenders including those who are indigent will be evaluated by an approved treatment provider and referred for treatment if recommended.</p> <p>Participants in sex offender treatment will successfully complete or maintain engagement in their programming.</p> <p>Individuals will submit to polygraph examination in conjunction with their sex offender treatment.</p>
Method(s) of Evaluation:	Contract Review of Services

Monthly Average to be Served: 50

Type of Offender(s) Served:

- ☒ Probation  
☒ Parole/Post-Prison  
☐ Local Control

Crime Category:

- ☒ Felony  
☒ Misdemeanor

Gender:

- ☒ Male  
☒ Female

Risk Level:

- ☒ High  
☒ Medium  
☒ Low

Which Treatment Provider(s) Will You Use Within This Program?

Provider Name	Treatment Type (ie., Anger Management, Cognitive, DV, Dual Diagnosis, Sex Offender, Inpatient Substance Abuse, or Outpatient Substance Abuse)	What, if any, state dollars are budgeted to the program and how much to each fund? (ie., GIA-\$25,000; M57-\$5000)
Oregon Center for Change	Sex Offender	\$50,000.00
Innovative Counseling Enterprises	Sex Offender	\$50,000.00
Effective Foundations Evaluations & Counseling	Sex Offender	\$50,000.00

Funding Sources

- |   |           |
|---|-----------|
| <input checked="" type="checkbox"/> State Grant-In-Aid Fund   | \$153,748 |
| <input type="checkbox"/> DOC M57 Supplemental Fund            | _____     |
| <input type="checkbox"/> CJC Justice Reinvestment Grant       | _____     |
| <input type="checkbox"/> CJC Treatment Court Grant            | _____     |
| <input type="checkbox"/> County General Fund                  | _____     |
| <input type="checkbox"/> Supervision Fees                     | _____     |
| <input type="checkbox"/> Biennial Carryover (GIA, M57, FSAPP) | _____     |
| <input type="checkbox"/> Other Fees (revenue)                 | _____     |
| <input type="checkbox"/> Other State or Federal Grant         | _____     |

Additional Comments:

Program Name:	Parole and Probation: Mental Health (MH) Housing Program
Program Description:	<p>The purpose of the MH Housing Program is to collaborate with medical and mental health professionals to ensure individuals on community supervision and suffering from Severe and Persistent Mental Illness (SPMI) receive appropriate care, housing and other resources so they can stabilize in the community and successfully transition to become self-sufficient as they exit the criminal justice system.</p> <p>Haven House provides 12 beds for male SPMI clients, while Serenity House holds 8 beds for female SPMI clients.</p>
Program Category:	Other Programs and Services
Program Objectives:	<p>Reduce jail and emergency room utilization.</p> <p>Individuals assessed to be high risk by Parole and Probation Services are prioritized by the county's mental health treatment system.</p> <p>Individuals in need of treatment (as determined by assessment or mental health practitioner referral) are provided appropriate mental health services in a timely manner.</p>
Method(s) of Evaluation:	Supervisor Review

Monthly Average to be Served: 20

Type of Offender(s) Served:

- ☒ Probation  
☒ Parole/Post-Prison  
☐ Local Control

Crime Category:

- ☒ Felony  
☒ Misdemeanor

Gender:

- ☒ Male  
☒ Female

Risk Level:

- ☒ High  
☒ Medium  
☒ Low

Which Treatment Provider(s) Will You Use Within This Program?

Provider Name	Treatment Type (ie., Anger Management, Cognitive, DV, Dual Diagnosis, Sex Offender, Inpatient Substance Abuse, or Outpatient Substance Abuse)	What, if any, state dollars are budgeted to the program and how much to each fund? (ie., GIA-\$25,000; M57-\$5000)

#### Funding Sources

- ☐ State Grant-In-Aid Fund  
☐ DOC M57 Supplemental Fund  
☐ CJC Justice Reinvestment Grant  
☐ CJC Treatment Court Grant  
☐ County General Fund  
☐ Supervision Fees  
☐ Biennial Carryover (GIA, M57, FSAPP)  
☐ Other Fees (revenue)  
☒ Other State or Federal Grant  
 Other: Please Identify  
☒ HACC \$992,760  
☐

Additional Comments: Housing Authority of Clackamas County (HACC) supports housing and services provided to clients residing at Haven and Serenity House.

Program Name:	Transitional Services: Residential Treatment and Counseling
Program Description:	<p>The purpose of the Residential Treatment and Counseling (RTC) Program is to treat substance use disorder and criminality, while also providing health, housing, and employment resources for individuals so they can achieve sustainable, long term recovery and psychological well-being.</p> <p>RTC coordinates with the Clackamas County Jail's Pre-Treatment dorm and provide staff to complete screenings and assessments to determine eligibility for treatment programs while also facilitating cognitive behavioral intervention groups for individuals while they are in custody.</p> <p>RTC houses the Clackamas Substance Abuse Program (CSAP) which provides long-term residential substance abuse and criminality interventions for medium and high risk men and women.</p>
Program Category:	Behavioral Health Tx Services - Substance Abuse
Program Objectives:	<p>Increase in residential clients who have successfully completed CSAP who are not arrested for a new crime within 12 months.</p> <p>Increase in residential clients who are in the labor force and earning a livable wage by the end of supervision.</p> <p>Increase in residential clients who live in stable housing by the end of supervision.</p>
Method(s) of Evaluation:	Annual statistics, GMU or CPC audit

Monthly Average to be Served:      Type of Offender(s) Served:      Crime Category:      Gender:      Risk Level:

☒ Probation      ☒ Felony      ☒ Male      ☒ High  
☒ Parole/Post-Prison      ☒ Misdemeanor      ☒ Female      ☒ Medium  
☒ Local Control                ☐ Low

Which Treatment Provider(s) Will You Use Within This Program?

Provider Name	Treatment Type <small>(ie., Anger Management, Cognitive, DV, Dual Diagnosis, Sex Offender, Inpatient Substance Abuse, or Outpatient Substance Abuse)</small>	What, if any, state dollars are budgeted to the program and how much to each fund? <small>(ie., GIA-\$25,000; M57-\$5000)</small>
CSAP	Criminality, Substance Abuse	\$6,187,457.11: \$1,462,980.72 (County General Fund), \$1,587,821.31 (State Grant-In-Aid Fund), \$960,097 (M57), \$1,117,384.77 (CJC Justice Reinvestment Grant) \$861,860.30 (Carryover), \$197,303 (CFA)

Funding Sources

<input checked="" type="checkbox"/> State Grant-In-Aid Fund	\$4,265,872.51
<input checked="" type="checkbox"/> DOC M57 Supplemental Fund	\$960,097
<input checked="" type="checkbox"/> CJC Justice Reinvestment Grant	\$1,117,394.77
<input type="checkbox"/> CJC Treatment Court Grant	
<input checked="" type="checkbox"/> County General Fund	\$3,981,600.48
<input type="checkbox"/> Supervision Fees	
<input checked="" type="checkbox"/> Biennial Carryover (GIA, M57, FSAPP)	\$861,860.30
<input type="checkbox"/> Other Fees (revenue)	
<input type="checkbox"/> Other State or Federal Grant	
Other: Please Identify	
<input checked="" type="checkbox"/> Criminal Fines Account	\$197,303
<input type="checkbox"/>	



Program Name:	Transitional Services: Transition Center
Program Description:	<p>The purpose of the Transition Center (TC) program is to provide immediate triage and referral for basic needs, stabilization services, and/or treatment for individuals releasing from custody so they can successfully integrate back into the community and re-engage in supervision where appropriate.</p> <p>The TC provides services for individuals serving jail sanctions or sentences under SB1145 (Local Control) by providing substance abuse assessment and release planning which includes screening and referral for services offered by the Clackamas Substance Abuse Program (CSAP) as well as other community-based providers.</p> <p>The TC coordinates with the Clackamas County Jail's Pre-Treatment dorm (a Justice Reinvestment Program) and provide staff to complete screenings and assessments to determine eligibility for treatment programs while also facilitating cognitive behavioral intervention groups for individuals while they are in custody.</p>
Program Category:	Transition Services
Program Objectives:	<p>Increase the number of individuals who engage Transition Center services who are not returned to the custody of Clackamas County Jail within 12 months.</p> <p>Increase the number of individuals referred for treatment and community resources.</p> <p>Increase the number of individuals entering and engaging in a treatment program.</p> <p>Increase the number of supervised individuals who report to their assigned PO and re-engage in their supervision.</p> <p>SB1145 AICs in custody at the Clackamas County Jail will be assessed through an interview process to develop a release plan that will guide their transition back into the community.</p> <p>SB1145 AICs eligible for inpatient treatment based on evaluation will transition into a residential program as soon as a bed becomes available.</p> <p>Sanctions served by Parole and Probation staff will be imposed based on the agency's sanctioning grid.</p>
Method(s) of Evaluation:	Annual statistics

Monthly Average to be Served: 230

Type of Offender(s) Served:

- ☒ Probation  
☒ Parole/Post-Prison  
☒ Local Control

Crime Category:

- ☒ Felony  
☒ Misdemeanor

Gender:

- ☒ Male  
☒ Female

Risk Level:

- ☒ High  
☒ Medium  
☒ Low

Which Treatment Provider(s) Will You Use Within This Program?

Provider Name	Treatment Type (ie., Anger Management, Cognitive, DV, Dual Diagnosis, Sex Offender, Inpatient Substance Abuse, or Outpatient Substance Abuse)	What, if any, state dollars are budgeted to the program and how much to each fund? (ie., GIA-\$25,000; M57-\$5000)

Funding Sources

- |  |                |
|--|----------------|
| <input checked="" type="checkbox"/> State Grant-In-Aid Fund        | \$1,065,840.43 |
| <input type="checkbox"/> DOC M57 Supplemental Fund                 |                |
| <input checked="" type="checkbox"/> CJC Justice Reinvestment Grant | \$1,288,146.85 |
| <input type="checkbox"/> CJC Treatment Court Grant                 |                |
| <input checked="" type="checkbox"/> County General Fund            |                |
| <input type="checkbox"/> Supervision Fees                          |                |
| <input type="checkbox"/> Biennial Carryover (GIA, M57, FSAPP)      |                |
| <input type="checkbox"/> Other Fees (revenue)                      |                |

☐ Other State or Federal Grant

Other: Please Identify

☐☐☐

Additional Comments: The Clackamas County Sheriff's Office (CCSO) does not fund jail custody sentences and jail sanctions through state grant-in-aid funds. Instead, CCSO applies those funds to Transitional Services in support of an 80-bed non-custodial community-based residential treatment and transition program.

Program Name:	Transitional Services: Community Service
Program Description:	The purpose of the Community Service Program is to provide sanction and sentencing alternative services to adults on supervision so they can be accountable for their behavior, while remaining in their community and providing cost-effective labor to local municipal partners.
Program Category:	Community Service and Work Crew
Program Objectives:	<p>Increase in individuals who attend their Community Service orientation and successfully complete their hours.</p> <p>Increase in out-of-custody sanctions who are eligible for community service and receive sanctions in lieu of jail time.</p> <p>Increase in Clackamas County jail bed days not used because client was assigned to or opted for Community Service.</p> <p>Increase in individuals sentenced to community service who are not arrested while serving their sentence.</p>
Method(s) of Evaluation:	<p>Annual audit of Community Services Program statistics</p> <p>Contractors provide annual evaluations of service</p>

Monthly Average to be Served: 250

Type of Offender(s) Served:

- ☒ Probation  
☒ Parole/Post-Prison  
☐ Local Control

Crime Category:

- ☒ Felony  
☒ Misdemeanor

Gender:

- ☒ Male  
☒ Female

Risk Level:

- ☒ High  
☒ Medium  
☒ Low

Which Treatment Provider(s) Will You Use Within This Program?

Provider Name	Treatment Type <small>(ie., Anger Management, Cognitive, DV, Dual Diagnosis, Sex Offender, Inpatient Substance Abuse, or Outpatient Substance Abuse)</small>	What, if any, state dollars are budgeted to the program and how much to each fund? <small>(ie., GIA-\$25,000; M57-\$5000)</small>

Funding Sources

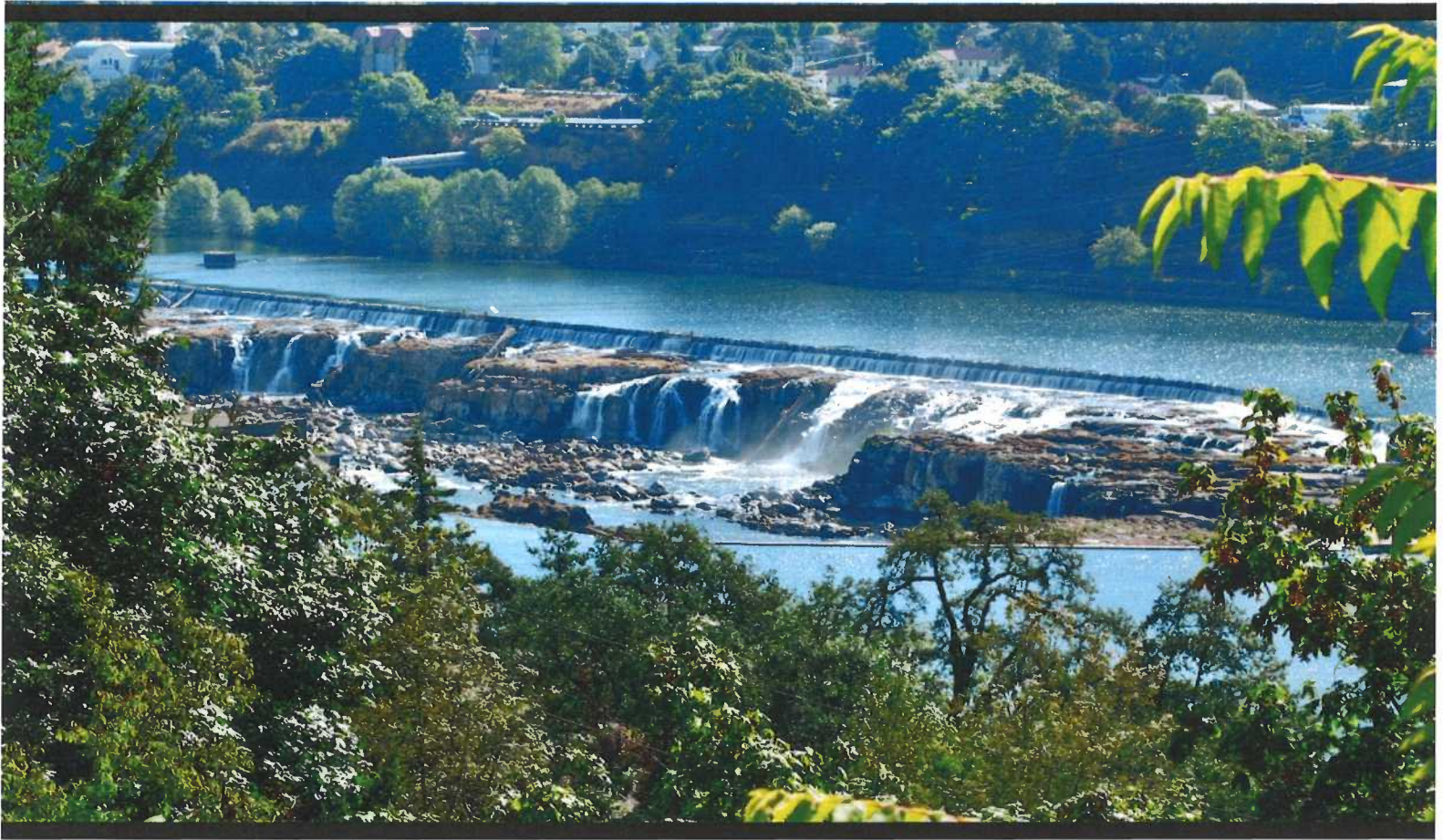
<input type="checkbox"/> State Grant-In-Aid Fund	_____
<input type="checkbox"/> DOC M57 Supplemental Fund	_____
<input type="checkbox"/> CJC Justice Reinvestment Grant	_____
<input type="checkbox"/> CJC Treatment Court Grant	_____
<input checked="" type="checkbox"/> County General Fund	\$930,169.43
<input type="checkbox"/> Supervision Fees	_____
<input type="checkbox"/> Biennial Carryover (GIA, M57, FSAPP)	_____
<input checked="" type="checkbox"/> Other Fees (revenue)	_____
<input type="checkbox"/> Other State or Federal Grant	_____
Other: Please Identify	
<input checked="" type="checkbox"/> Work Crew Contracts	\$287,991
<input type="checkbox"/>	_____
<input type="checkbox"/>	_____

Additional Comments:





# BUDGET SUMMARY



**Justice,  
Accountability, &  
Reintegration**



**Clackamas County**  
**2025-2027 Community Corrections Budget Summary**

<b>Program Name</b>	<b>Grant in Aid Fund</b>	<b>All Other Funds and Fees</b>	<b>Total</b>
Parole & Probation – Mental Health Housing		\$992,760	\$992,760
Parole & Probation – Operational Support Services	\$1,995,642.75	\$796,291.54	\$2,791,934.28
Parole & Probation - Parole & Probation Supervision	\$11,428,733.31	\$7,102,057.64	\$18,530,790.95
Parole & Probation – Sex Offender Services	\$153,748		\$153,748
Parole & Probation – Victim Services		\$412,705.29	\$412,705.29
Transitional Services – Community Service		\$1,218,160.43	\$1,218,160.43
Transitional Services – Residential Treatment & Counseling	\$4,265,872.51	\$7,118,255.56	\$11,384,128.07
Transitional Services – Transition Center	\$1,065,840.43	\$1,288,146.85	\$2,353,987.28
<b>Fund Total</b>	<b>\$18,909,837</b>	<b>\$18,928,377.30</b>	<b>\$37,838,214.30</b>