

## MEMORANDUM

TO: Board of County Commissioners

FROM: Mary Rumbaugh, Director of Health, Housing and Human Services

RE: Update on the Clackamas County Stabilization Center

DATE: July 22, 2025

---

**REQUEST:** None, informational session only.

### **BACKGROUND:**

The Board of County Commissioners approved the use of a County-owned facility located at 9200 SE McBrod Avenue in Milwaukie for a Stabilization Center, which will offer two different but complimentary programs: a 23-hour Crisis Stabilization Program and a short-term Housing and Case Management Stabilization Program.

#### 23-hour Crisis Stabilization Program

The City of Milwaukie, Milwaukie Police Department, H3S, CCSO and PGA have been meeting since late 2023 on design and community engagement.

In September 2024, H3S issued a Request for Proposal (RFP) for both of the programs. In November, 2024, Clarvida, LLC was awarded the contract for the 23-hour Crisis Stabilization Program and The Father's Heart was awarded for the Housing and Case Management Stabilization Program.

During the 2024 state legislative session, Clackamas County was awarded \$4M for the construction and capital improvements to the building through HB 5204.

The 23-hour Crisis Stabilization Program, open 24/7/365, is an 8-recliner chair program in which an individual who has come to the attention of law enforcement or mobile crisis teams due to a mental health crisis can receive rapid assessment and stabilization in lieu of going to jail or the emergency room. The individual can remain in the program for up to 23 hours. On average, individuals stabilize and can discharge back home to their home and community within 10-11 hours. Referrals are only through law enforcement or mobile crisis response teams, no walk-up services are provided.

Ongoing operating funds for the 23-hour Crisis Stabilization Program is through an agreement with Care Oregon. The Oregon Health Authority is currently in rulemaking for Crisis Stabilization Services and hopes to obtain approval for Medicaid billing in the future.

### Housing and Case Management Stabilization Program

The Housing and Case Management Stabilization Program has 13 beds for individuals who are houseless or at risk of houselessness and who need short-term stabilization, up to 60 days. Referrals are through the Coordinated Housing Access line or a direct referral from the 23-hour crisis stabilization program if someone is not ready to return to their home within the 23 hours of being at the program.

Ongoing operating funds for the Housing and Case Management Stabilization Program is through Housing and Community Development Division-Supportive Housing Services funds.

The City partners, county partners and the two providers meet twice a month and review the status of design and construction, the development of policy and procedures, ongoing community engagement and completion of a partner agreement.

Construction is on track and on budget with an expected completion of October 2025 and opening in December 2025.

### **RECOMMENDATIONS:**

None, informational session only.

### **Attachment:**

- #1: Building Design and Initial Renderings for 23-Hour Crisis Stabilization Program

*Healthy Families. Strong Communities.*

2051 Kaen Road, Oregon City, OR 97045 • Phone (503) 650-5697 • Fax (503) 655-8677

[www.clackamas.us](http://www.clackamas.us)

DRAWING NOTES

- 1. SEE A601 FOR DIMS + ACCESSIBILITY CLEARANCES/REQUIREMENTS FOR TOILETS AND BATHROOMS.
- 2. SEE A901 FOR ROOM, DOOR, AND WINDOW SCHEDULES

DRAWING LEGEND

- TYP (N) UNRATED WALL
- TYP (E) UNRATED WALL
- (2) HR. RATED FIRE WALL
- (1) HR. RATED FIRE PARTITION
- PROPERTY LINE
- (E) TO BE REMOVED

KEYNOTES

- 1 WALLS, DOORS, AND FIXTURES TO BE REMOVED, TYP
- 2 REMOVE (E) WASTE FACILITIES, RELOCATE
- 3 RELOCATE (E) GAS METER
- 4 (N) MAIN EXIT RAMP
- 5 (N) EXTERIOR EXIT STAIR - SEE A700
- 6 (N) DRINKING FOUNTAIN
- 7 MOP SINK
- 8 UTILITY SINK
- 9 WASHER/DRYER
- 11 (N) EXTERIOR RAMP - SEE CIVIL DRAWINGS
- 14 (E) BIKE RACK
- 15 (E) ELECTRICAL PANELS
- 16 (E) ACCESSIBLE RAMP AND LANDING
- 17 (E) EMERGENCY GENERATOR
- 18 (E) CONC. STEM WALLS BELOW STAIR TO BE REMOVED
- 19 REMOVE AND REPLACE SIDING TO MATCH T+G GAUARD RAIL
- 20 (E) BEARING WALL - SEE STRUCTURAL FOR HEADER DETAILS WHERE WALL IS REMOVED.

DRAWING REVISIONS

NO.	DATED	DESCRIPTION
A	01.07.2025	ELECT. ROOM

em

esign

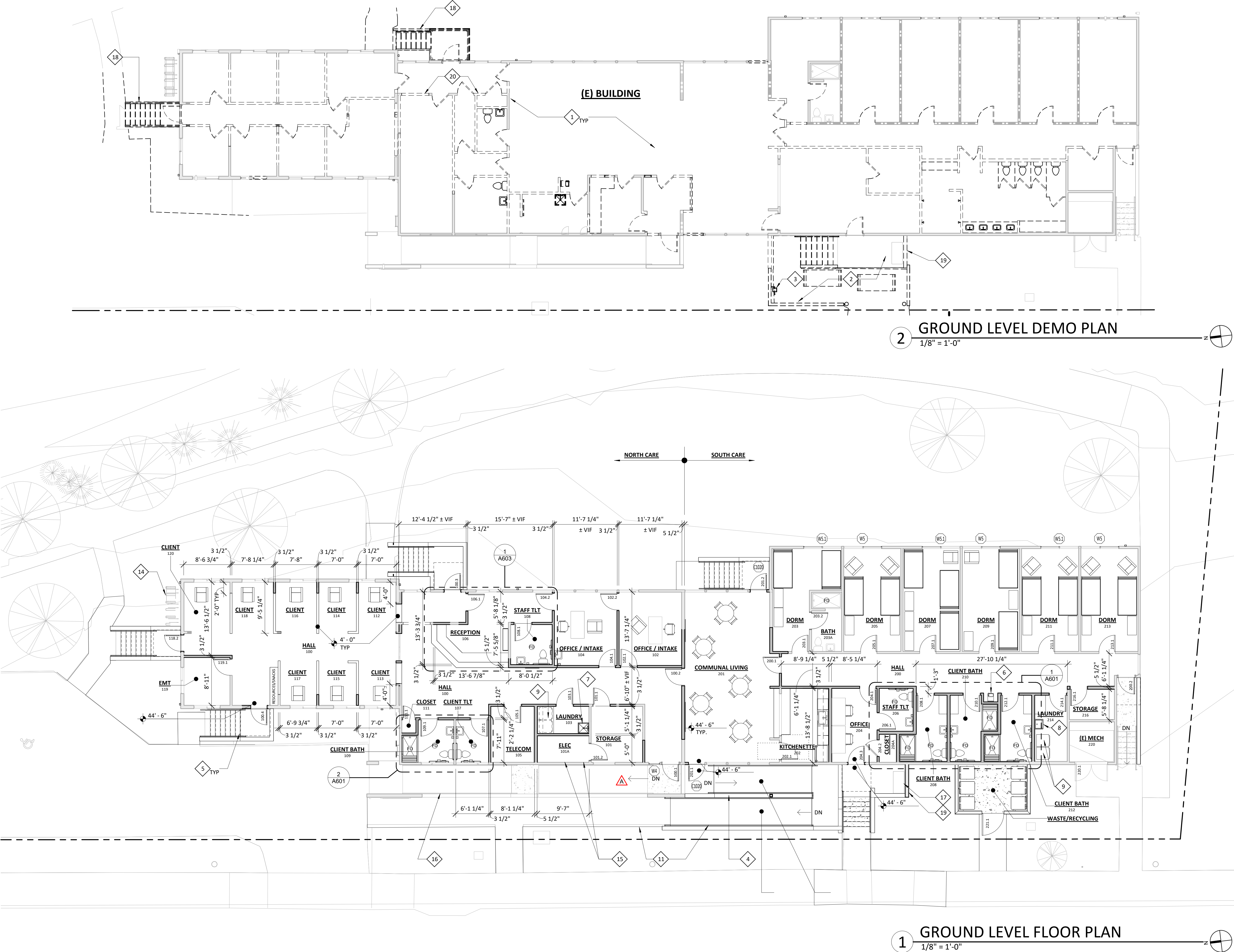
architecture and planning

1001 se sandy blvd, portland or 97214  
503.544.7210 erik@emarchitecture.net

MCBROD CRISIS CENTER  
9200 SE MCBROD AVENUE

CONTRACT DOCUMENTS  
12.19.2024

FLOOR PLANS



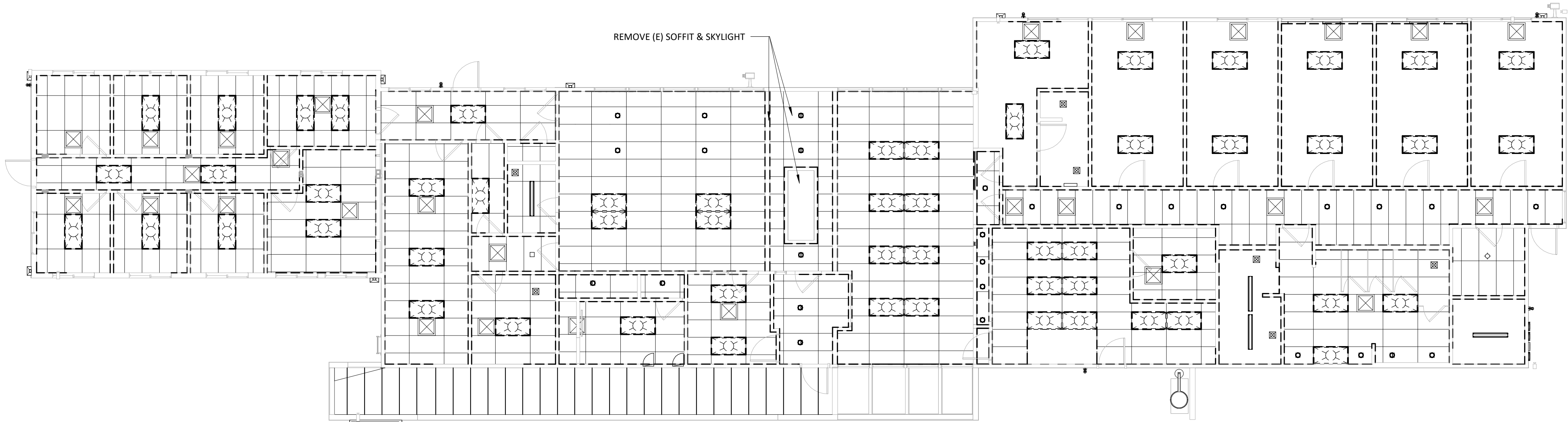


DRAWING NOTES

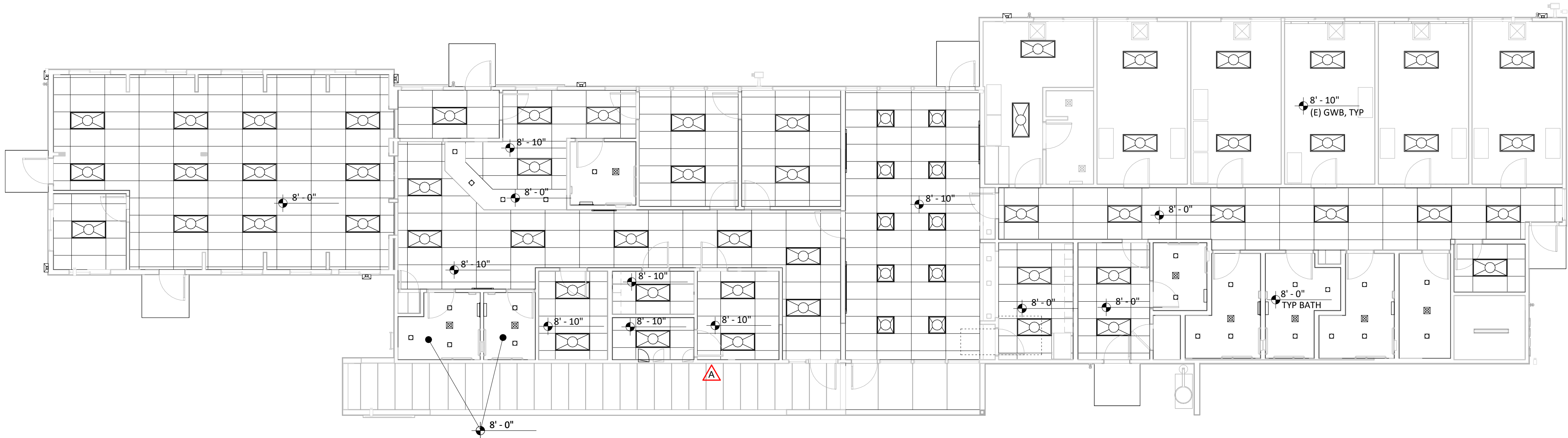
- 1. OUTLETS TO BE 15" MIN AFF UNO
- 2. SWITCHES TO BE AT 48" MAX
- 3. SEE ELECTRICAL DRAWINGS FOR MORE INFORMATION
- 4. ALL NEW FIXTURES TO BE LED OR ACCEPT LED LAMPS

DRAWING LEGEND

- DUPLEX ELECTRICAL OUTLET
- GROUND FAULT INTERRUPT
- TELEPHONE OUTLET
- SWITCH, SINGLE POLE
- SWITCH, MOTION SENSOR
- EXHAUST FAN / LIGHT COMBO
- BATHROOM VANITY LIGHT
- RECESSED DOWN LIGHT - 5" DIAMETER
- TROFFER CEILING FIXTURE - 2' X 4'
- TROFFER CEILING FIXTURE - 2' X 2'
- WALL MOUNTED OUTDOOR SCONCE
- SMOKE/CARBON MONOXIDE DETECTOR/ALARM
- CHANGE IN CEILING PLANE



2 GROUND FLOOR DEMO RCP  
1/8" = 1'-0"



1 REFLECTED CEILING PLAN  
1/8" = 1'-0"

DRAWING REVISIONS

NO.	DATED	DESCRIPTION
A	01.07.2025	ELECT. ROOM

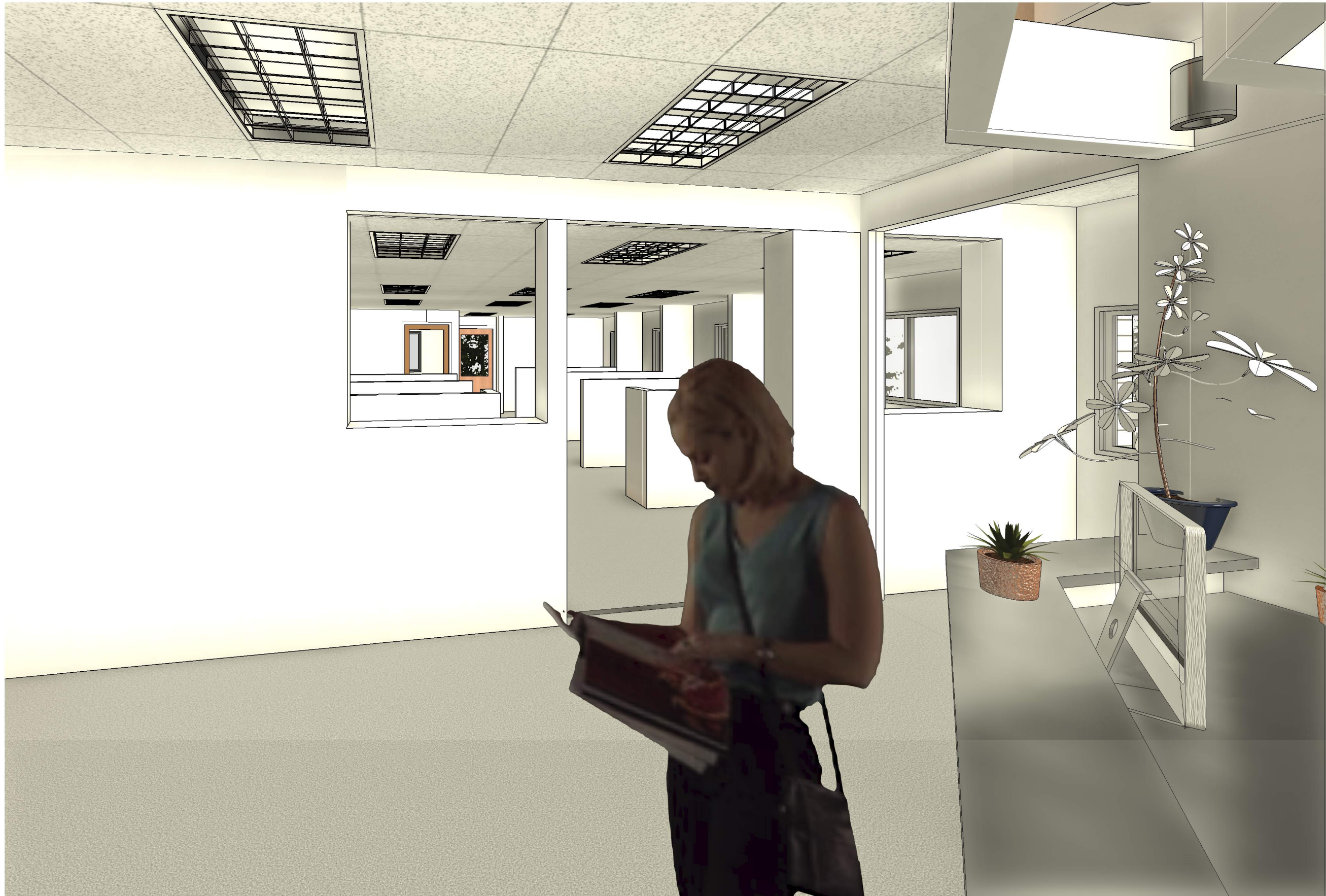
architecture and planning  
1001 se sandy blvd, portland or 97214  
503.544.7210 erik@emarchitecture.net

MCBROD CRISIS CENTER  
9200 SE MCBROD AVENUE

CONTRACT DOCUMENTS  
12.19.2024

REFLECTED CEILING PLAN





4 LOBBY LOOKING NORTHEAST



3 CLIENT ROOMS LOOKING SOUTHWEST



2 CLIENT ROOMS LOOKING NORTH



1 P1 - VIEW NORTH FROM RECEPTION

DRAWING REVISIONS		
NO.	DATED	DESCRIPTION



architecture and planning  
1001 se sandy blvd, portland or 97214  
503.544.7210 erik@emarchitecture.net

**MCBROD CRISIS CENTER**  
9200 SE MCBROD AVENUE

**CONTRACT DOCUMENTS**  
12.19.2024

INTERIOR VIEWS

**A651**





1 CLIENT VIEW

DRAWING REVISIONS

NO.	DATED	DESCRIPTION



architecture and planning  
1001 se sandy blvd, portland or 97214  
503.544.7210 [erik@emarchitecture.net](mailto:erik@emarchitecture.net)

**MCBROD CRISIS CENTER**  
9200 SE MCBROD AVENUE

**CONTRACT DOCUMENTS**  
12.19.2024

INTERIOR VIEWS

A652